

CHAPTER

3

BARR. BALASANEH WIMBEXAR LIBRARY
SHIVAJI UNIVERSITY, KOLHAPUR.

CHAPTER- III

PROFILE OF DR. D.Y. PATIL SUGAR FACTORY.

3.1 History of Factory.

3.2 Location of Factory.

3.3 Geographical Area.

3.4 Aims and Goals of Factory.

3.5 Daily Sugarcane crushing Capacity.

3.6 Organization of Dr. D. Y. Patil Factory.

3.7 Environmental Equilibrium.

3.8 Other Facilities.

3.8.1 Computer facility.

3.8.2 Banking facility.

3.8.3 Tender.

3.9 Conclusion.

PROFILE OF DR. D.Y. PATIL SUGAR FACTORY

3.1 History of Factory:

The role of Padmashree Dr. D.Y.Patil Co-Operative Sugar Factory is very important in Sugar Industry of Maharashtra. Gaganbawada Taluka is a region of heavy rainfall and hilly area. There is no economical development. In 1967-77 when Dr. D.Y. Patil was M.L.A. he assured the establishment of sugar factory in Gaganbawada for the need of economic development. After D.Y.Patil M.L.A. period Udaysingh Patil, Alias Bala Patil from Asalaj took sincerely efforts for sanctioning the sugar factory. Bala Patil from Gaganbawada taluka, so he knew about the poor conditions of farmers, so he took efforts for the development of infrastructural facilities in Gaganbawada taluka. Afterwards Satej Alias Banti D. Patil completed his all efforts and in 1994 legally sectioning of sugar factory. The authorized license is on the name of Banti D.Patil.

The condition makes stated 2000-01. The construction was completed in 2002 and started crushing session in 2003. The proper price for sugarcane and increase in employment are the main factors for the economic development of the farmers in the area.

In Maharashtra many sugar factories are weak. The actual profit from this industry is converted in other section generise to corruption. The basic advantages of co-operation are for limited persons. But the farmers could not get advances from them. This corruption is not opened by farmers openly. The directors are elected by panel voting who have low qualities and they start their dynasty.

But D.Y.Patil sugar factory is different from it. The factory is developing on the principles of Co-Operation and minimum 500 peoples employed. Sugarcane collecting workers and transport holders get employed. The role of sugar factory is important for development of Economical development of Gaganbawada.

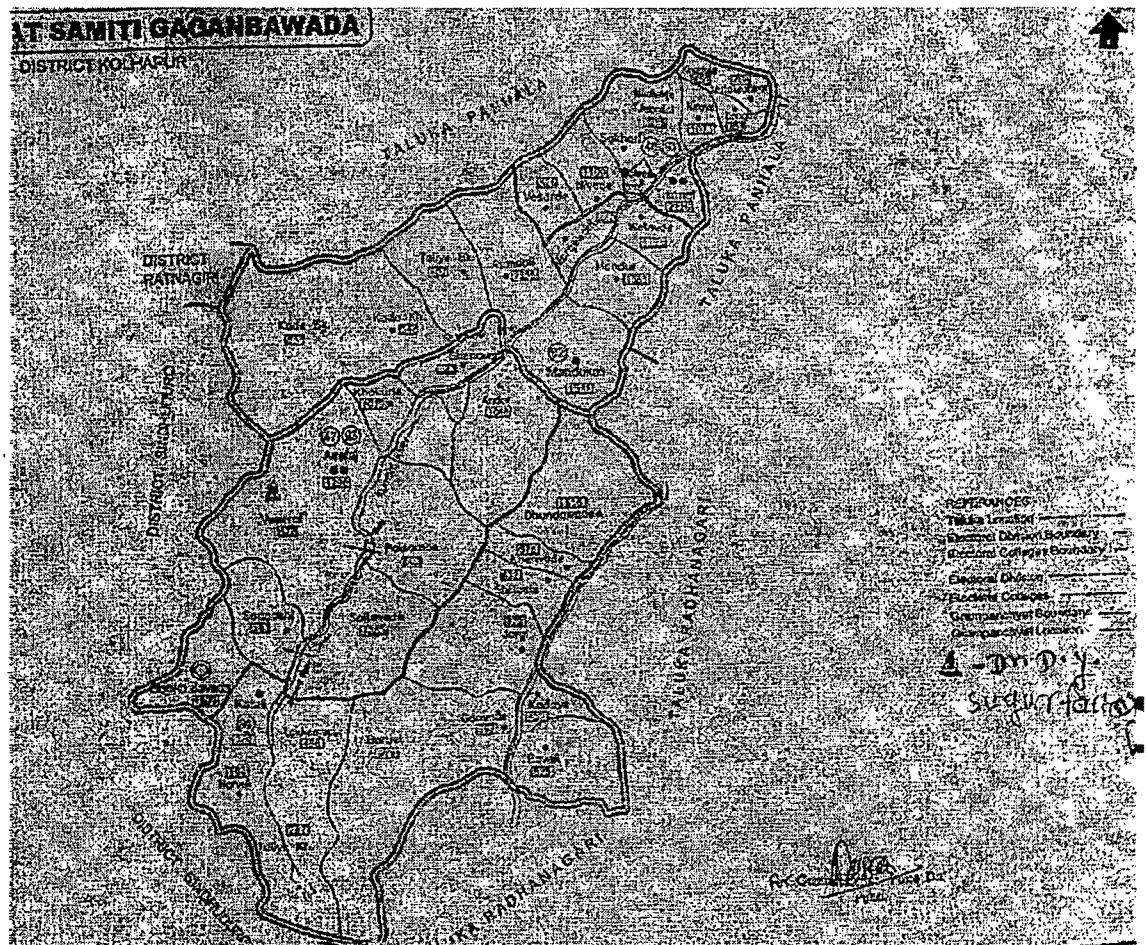
3.2 Location of Factory:

The Padmashree Dr. D.Y.Patil Co-Operative Sugar factory is located at Dyanshantinagar, Asalaj, in Gaganbawada taluka of Kolhapur district in Maharashtra state. The location of Dr. D.Y.Patil Co-Operative Sugar factory is presented in map

no. 2. It is about 01 km. from Aslaj, 50 km from Kolhapur, 22 km from Vaibhavwadi and 9 km from Gaganbawada.

Above map shows the location of Dr.D.Y.Patil Sugar Factory in Gaganbavada Taluka The factory is in rainfall zone area. The average rainfall is generally a spread over in three months from June to September. It receives 6250 to 6500mm. rainfall every year.

Map No.1.2 Location of padamshree Dr.D.Y.Patil Co-operative Sugar Factory Gaganbavada.



The nearest bus stand is Aslaj itself. The factory site is 9 km. from the Gaganbawada taluka S.T. stand. The Maharashtra state transport buses and Goa state transport buses are also available from Gaganbawada, Kolhapur, Puna, Sawantwadi, Ratnagiri, Vaibhavwadi and Goa etc.

3.3 Geographical Area :

For establishment of any industry the following factors are important- social conditions, economical conditions as well as geographical conditions. Basically Gaganbawada taluka is hilly and heavy rainfall area. Dr. D.Y.Patil Co-Operative Sugar factory is located in the central part of Gaganbawada taluka in Asalaj. The raw material sugarcane is supplied from the nearby area of sugar factory. The quantity of rain is 200 to 250 inch.

The total land covered by industry is 90 hecters area. Black soil, red soil found on agricultural land, Cornflower, Wheat, Sunflower, Rice Nachni, cultivated. But average production of rice so high.

Totally 5 Talukas and 102 villages are consisted in production area of sugar factory. The 102 village are divided into 5 Talukas as under given in the table no 3.1.

Table No. 3.1

Consisted in Production Area of Sugar Factory

Sr.No.	Talukas	No. of Villages
1	Gaganbawada	39
2	Panhala	12
3	Vaibhavwadi	24
4	Radhanagri	14
5	Kankavali	13
6	Total	102

Source: Annual Report of the Factory.

The above table no.3.1 examines consistent area of Dr.D.Y.Patil sugar factory divided into five talukas. There are 39 villages in Gaganbavada taluka where as Panhala 12, Vaibhavwadi 24 villages, Radhanagari 14 and Kankavali 13 villages.

Kumbhi River is flowing nearby the sugar factory. This river supplies water for sugarcane, in its area of operation. Kumbhi medium irrigation project is near by 9 km, within this Kode dam and Andur tank is constructed. The work of Kasari Dam

project is going on from the last 10 years. This dam will be very useful for the Gaganbawada region and particularly for the area of sugar factory.

3.4 Aims and Goals of Factory:

1. Development of Agriculture.
2. Development the social, industrial, cultural and geographical of under the factory of 102 villages.
3. Economical development of farmers.
4. Economical development of Gaganbawada taluka.
5. The actual reasonable, proper price for production creation.
6. Employment creation.
7. The qualitative sugar production.
8. Rain for cement farmer about self dependent thrift and co-operation.
9. The establishment of machine crushed sugarcane for presumed and mollasses.
10. The starting of secondary and supplementary industry for development.
11. The rise of production with new machineries.
12. The encouragement of farmer for using new machinery and technology.
13. ETP (Enfluent Treatment Plan) when started for saying environmental degradation.
14. The actual work of industry with the rules and conditions of Government.
15. The supplementary rules and factors for fulfillment above aims and goals.

3.5 Daily Sugarcane crushing Capacity:

The daily sugarcane crushing capacity 2500 TCD. Actual sugarcane crushing capacity is 2500 TCD tones.

3.6 Organization of Dr.D.Y.Patil Factory:

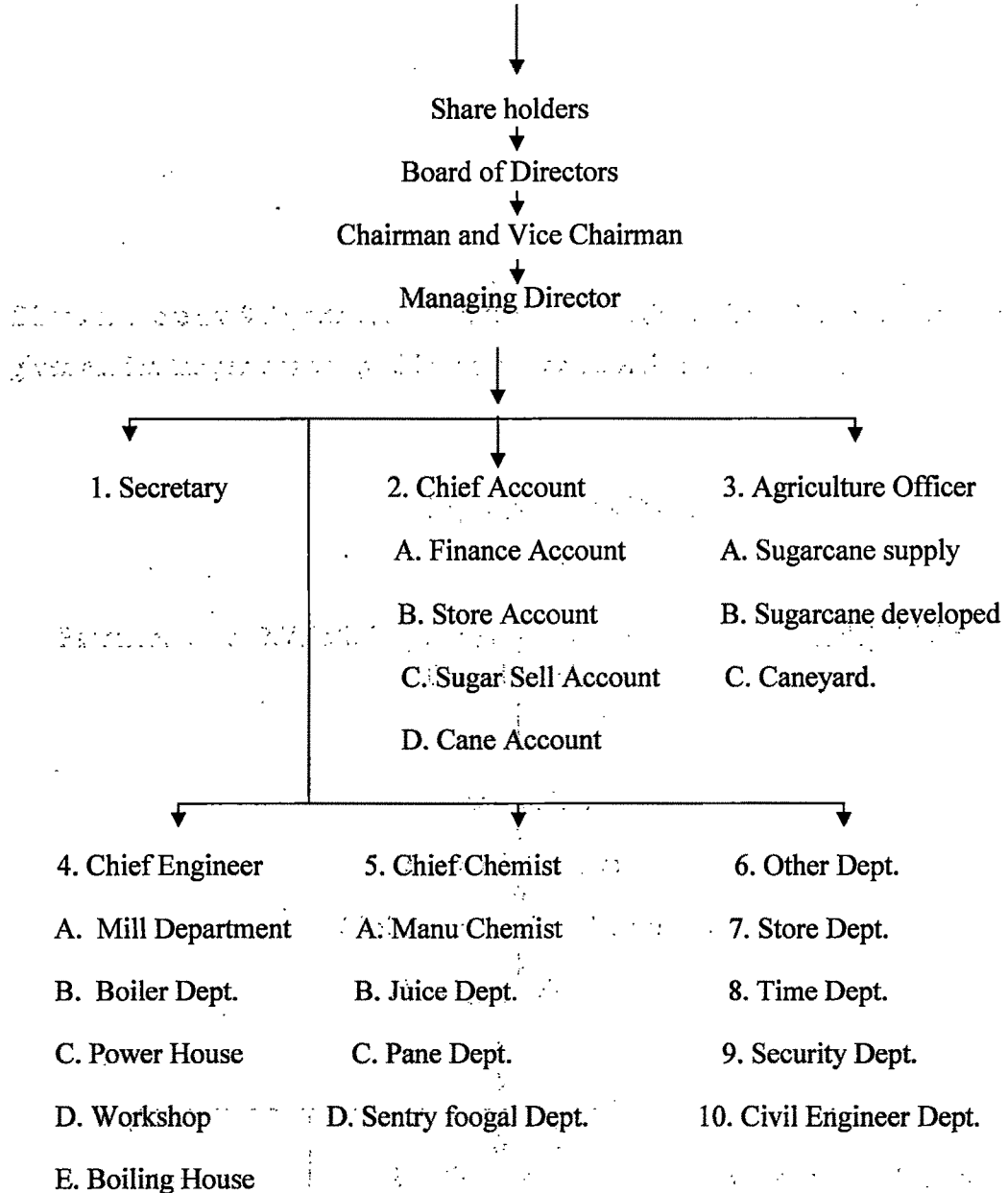
As stated in the Chart No.3.1. Chairman with the help of executive members and Managing Director (M.D.) administer the whole factory. Managing Directory is an official head of all administered bodies responsible to Chairman; this work has been divided into two sections. The administrative work is being carried out by senior executive and the technical work is being carried out by another Managing

Director. There are 9 departments under these two sections with reference to the chart given earlier, the persons and positions of the organization is given the Chart No. 3.1

Organization Chart

of

Padmashree Dr. D.Y.Patil Sugar Factory Ltd. Dyanshantinagar, Asalaj Taluka
Gaganbawada.



3.7 Environmental Equilibrium:

For avoiding water pollution Effluent Treatment Plan (ETP) was started. Due to this reason ecological balance is maintained. The role of sugar factory is very important in sustainable development and environmental equilibrium.

3.8 Other Facilities:

3.8.1 Computer facility:

New technology is used by factory. In all departments 28 computers. The work is with the help of that computers.

3.8.2 Banking facility:

All the transaction in Nationalized and Authorized Banks. The bills are saved on the hands of farmers in Central Banks of District. The Salary and payment of workers saved in Dr. D.Y.Patil Co-Operative Bank, Asalaj.

3.8.3 Tender:

The tender is for economical development and increased the employed in scheme of welfare and issued from various departments as follows.

1. Trading Buggasses Boxes.
2. Ash transport.
3. Presmud transport.
4. Sugar transport.
5. Portem in Godown.
6. Portem in sugar home.
7. A manger (Crib) Contract.
8. Cleaning of factory area.
9. Other remaining civil works.

3.9 Conclusion:

This chapter discussed the profile of Padmashree Dr.D.Y.Patil Co-Operative Sugar Factory. It is located in rain fall area. It has started its crushing session in 2003.

The profile of sugar factory includes the history of factory, location of factory, geographical area, aims, crushing capacity, organization, environmental equilibrium, other facilities. It will be clear that the factory has introduced many socio-economic activities in its area of operation. In short the profile of Padmashree Dr.D.Y.Patil Co-Operative Sugar Factory showed its different activities during the period under study.

3.9 Conclusion:

This chapter discussed the profile of Padmashree Dr.D.Y.Patil Co-Operative Sugar Factory. It is located in rain fall area. It has started its crushing session in 2003.

The profile of sugar factory includes the history of factory, location of factory, geographical area, aims, crushing capacity, organization, environmental equilibrium, other facilities. It will be clear that the factory has introduced many socio-economic activities in its area of operation. In short the profile of Padmashree Dr.D.Y.Patil Co-Operative Sugar Factory showed its different activities during the period under study.