

---

-:-

A P P E N D I X

-:-

---

.....

=O=



## 5) Principal crops / yield A - 1970-71

| Sr. No. | Crop                   | Area under each crop in ha/ac |             |       | Yield hect. kg. | Total production |
|---------|------------------------|-------------------------------|-------------|-------|-----------------|------------------|
|         |                        | Irri.                         | Unirrigated | Total |                 |                  |
| 1       | Sugarcane              |                               |             |       |                 |                  |
| 2       | Rice                   |                               |             |       |                 |                  |
| 3       | Jowar                  |                               |             |       |                 |                  |
| 4       | Wheat                  |                               |             |       |                 |                  |
| 5       | Groundnut              |                               |             |       |                 |                  |
| 6       | Pulses                 |                               |             |       |                 |                  |
| 7       | Potato                 |                               |             |       |                 |                  |
| 8       | Spices/Con-<br>diments |                               |             |       |                 |                  |
| 9       | Fruits/Vege-<br>tables |                               |             |       |                 |                  |
| 10      |                        |                               |             |       |                 |                  |

## B - 1985-86

|    |                        |  |  |  |  |  |
|----|------------------------|--|--|--|--|--|
| 1  | Sugarcane              |  |  |  |  |  |
| 2  | Rice                   |  |  |  |  |  |
| 3  | Jowar                  |  |  |  |  |  |
| 4  | Wheat                  |  |  |  |  |  |
| 5  | Groundnut              |  |  |  |  |  |
| 6  | Pulses                 |  |  |  |  |  |
| 7  | Potato                 |  |  |  |  |  |
| 8  | Spices/Con-<br>diments |  |  |  |  |  |
| 9) | Fruits/Vege-<br>tables |  |  |  |  |  |



## 3. Irrigation water use

- a) Do you own lift irrigation scheme ? Yes / No
- b) Are you a member of co-operative lift irrigation ? Y/N
- c) Do you know about the standard water requirement of crops ? If Yes, source of information -  
Do you follow this ? Yes/No
- d) Do you think that more water use increases production  
Yes/ No How ?
- e) Do you get irrigation water for your crop as and when required ?
- f) Duration of consecutive irrigation .... days
- g) Method of irrigation used : Mark ( ✓ )  
(1) Floow ( ) (2) Border ( ) (3) Furrow ( )  
(4) Sorrhugation ( ) (5) Sprinkle ( ) (6) Drip ( )  
(7) Any other local - mention the names :-
- h) Source of Irrigation

| Sr. No. | Source                  | Area in hectare/Acre |        |       |
|---------|-------------------------|----------------------|--------|-------|
|         |                         | Owned                | Leased | Total |
| 1       | <u>Canal Irrigation</u> |                      |        |       |
|         | Private                 |                      |        |       |
|         | Government              |                      |        |       |
| 2       | <u>Well Irrigation</u>  |                      |        |       |
|         | Owned                   |                      |        |       |
|         | Leased                  |                      |        |       |
|         | Rented                  |                      |        |       |
|         | Common                  |                      |        |       |
|         | Other Source            |                      |        |       |
| 3       | <u>River Irrigation</u> |                      |        |       |

i) Do you apply well irrigation ? Yes/No

If Yes - Number of wells \_\_\_ area irrigated \_\_\_ ha/ac

Depth of watertable in the well

Rainy \_\_\_ M Summer \_\_\_ M Average \_\_\_ M

Duration of water availability \_\_\_ months ?

Average watertable for last 10 years \_\_\_ feet/metre

j) Is there waterlogged area ? Yes/No

If Yes, How much \_\_\_ ha/ac

Location of waterlogged area ( ✓ )

i) Canal irrigation area

ii) Vicinity of river

iii) Well irrigation area

iv) Other

Reasons of waterlogging -

#### 4. Agricultural awareness

Do you know about following agricultural innovations ?

| Sr. No. | Agri. Innovation        | Y/N | When used year | If yes what is it ? |           |
|---------|-------------------------|-----|----------------|---------------------|-----------|
|         |                         |     |                | Correct             | Incorrect |
| 1       | Soil testing            |     |                |                     |           |
| 2       | Compost making          |     |                |                     |           |
| 3       | Green manuring          |     |                |                     |           |
| 4       | Mixed fertilizers       |     |                |                     |           |
| 5       | Improved seeds          |     |                |                     |           |
| 6       | Seed treatment          |     |                |                     |           |
| 7       | Pesticides/Insecticides |     |                |                     |           |
| 8       | Improved implements     |     |                |                     |           |
| 9       | Micro nutrients         |     |                |                     |           |
| 10      | Mio fertilizers         |     |                |                     |           |
| 11      | Drip Irrigation         |     |                |                     |           |
| 12      | Sprinkle irrigation     |     |                |                     |           |



PLATE 1 Cracks in the Right Bank Canal  
at Wai, near Dhom Colony

DR. BALASAHEB KHARDEKAR LIBRARY  
SHIVAJI UNIVERSITY, KOLHAPUR





PLATE 2-A Grass in canal



PLATE 2-B Cattles in canal



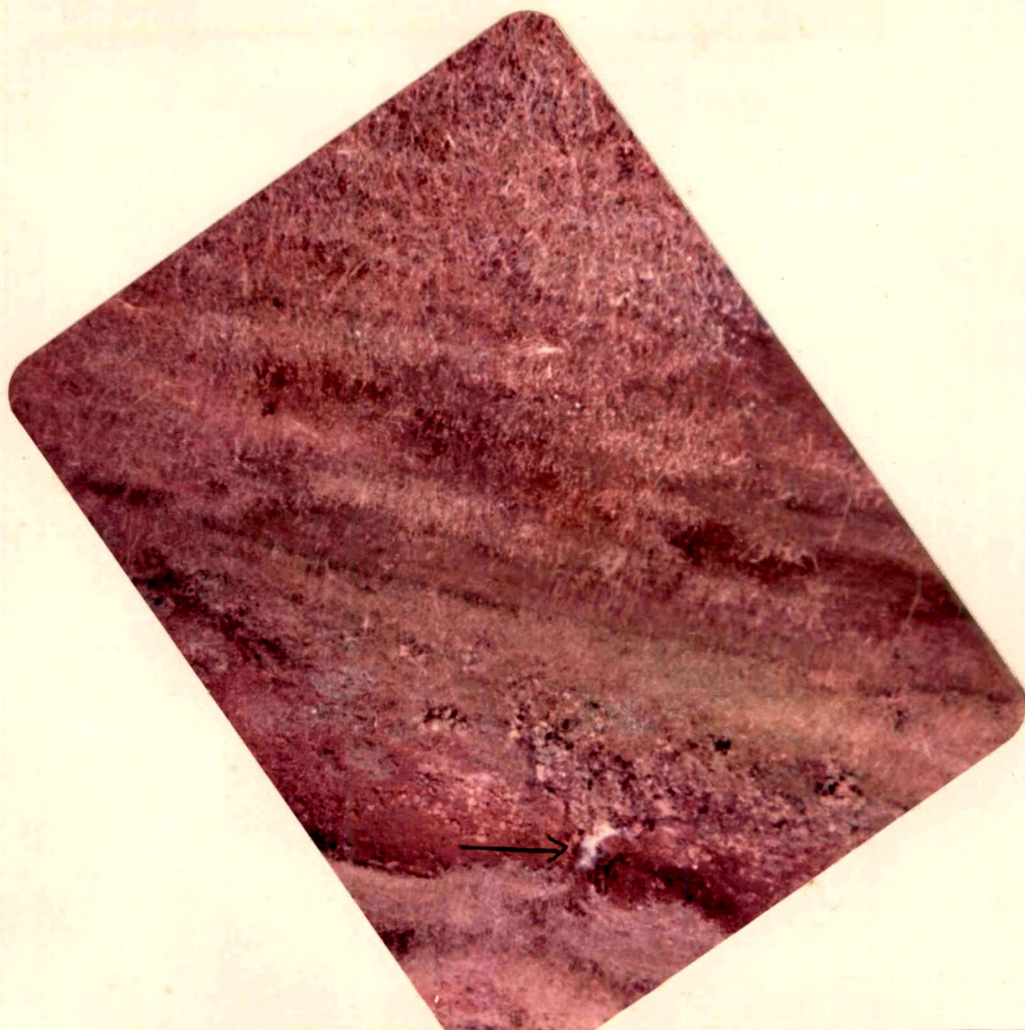


PLATE 3-A Water likage at village Khanapur



PLATE 3-B Waterlogged area at village Menavali





PLATE 4-A Nilgiri cultivation at village Asale



PLATE 4-B Sugarcane and wheat cultivation in canal irrigated area at village Ozarde





PLATE 6-A Teak cultivation in canal irrigated area  
at village Bhuing



PLATE 6-B Teak cultivation at Phulenagar



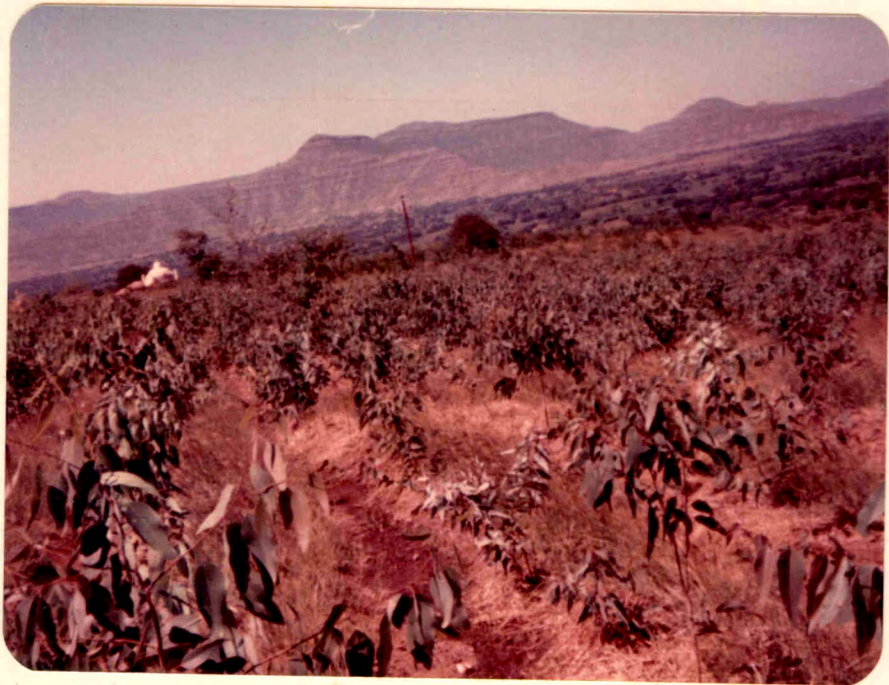


PLATE 4-A Nilgiri cultivation at village Asale



PLATE 4-B Sugarcane and wheat cultivation in canal irrigated area at village Ozarde





PLATE 5-A Horticulture at village Asale in canal irrigated area



PLATE 5-B Spices (Dalchini)





PLATE 6-A Teak cultivation in canal irrigated area  
at village Bhuing



PLATE 6-B Teak cultivation at Phulenagar