

PHOTO PLATES



Photo : 1 Rugged Terrain of Panhala Tahsil



Photo : 2 Researcher at the Field Work.



Photo : 3 Conventional Agricultural Practice on Slope

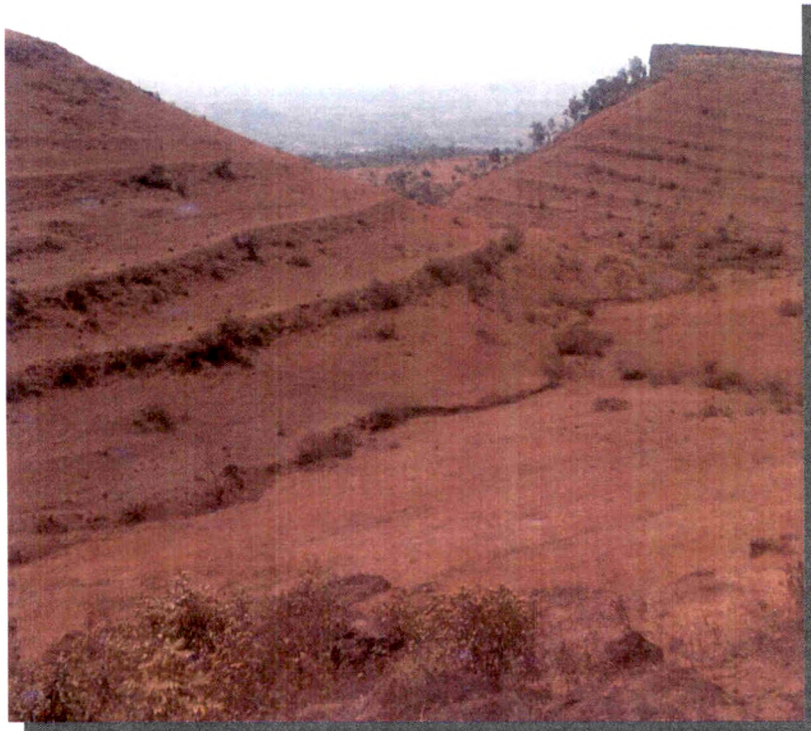


Photo : 4 Contour Farming at Panhala Range



Photo : 5 Stony Approach to the Hill Top Village.



Photo : 6 Rugged terrain not suitable for Agriculture on Masai Plateau



Photo : 7 Foot Hill Village Bongewadi



Photo : 8 Temple of Masai Goddess at Masai Plateau



Photo : 9 Elongated Village Nebapur

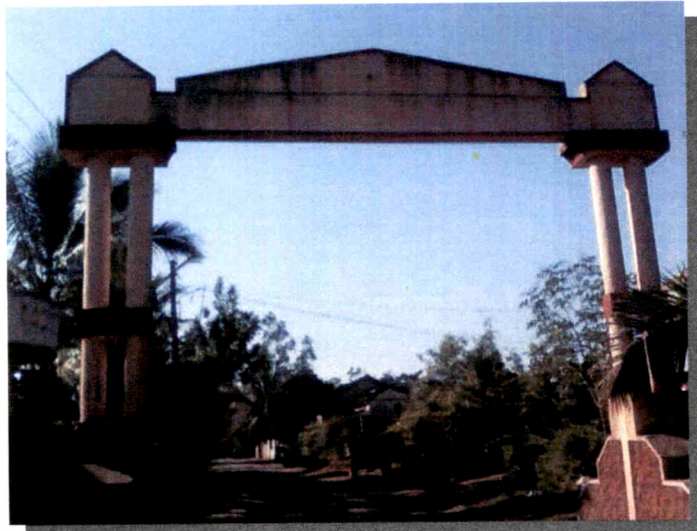


Photo : 10 Village Entrance Arch Jakhale



Photo : 11 Residence of Village Chief (Wada) at Jakhale



Photo : 12 Typical Rural House at Mhalunge

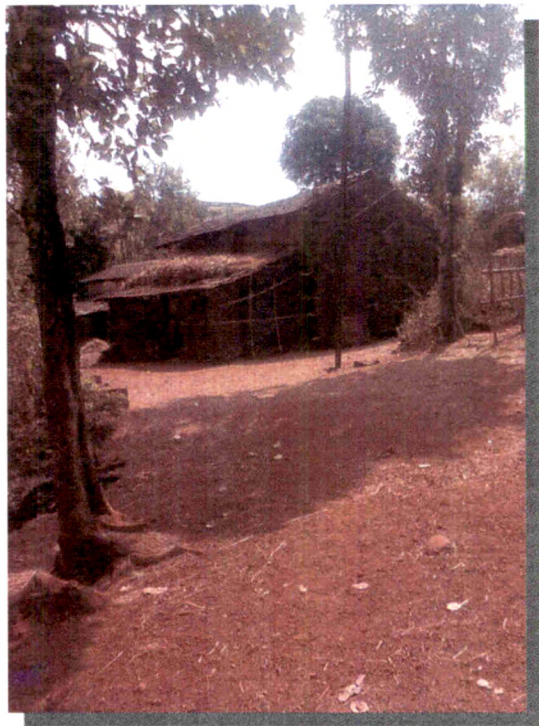
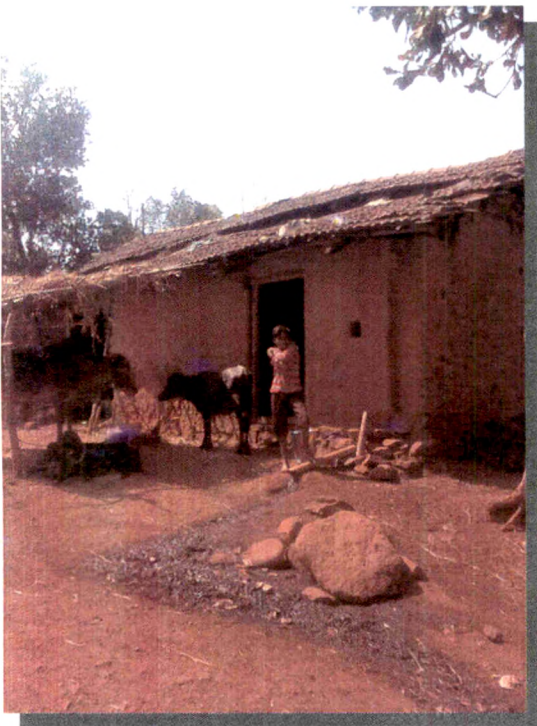


Photo : 13 & 14 Rural House with Livestock in Backyard

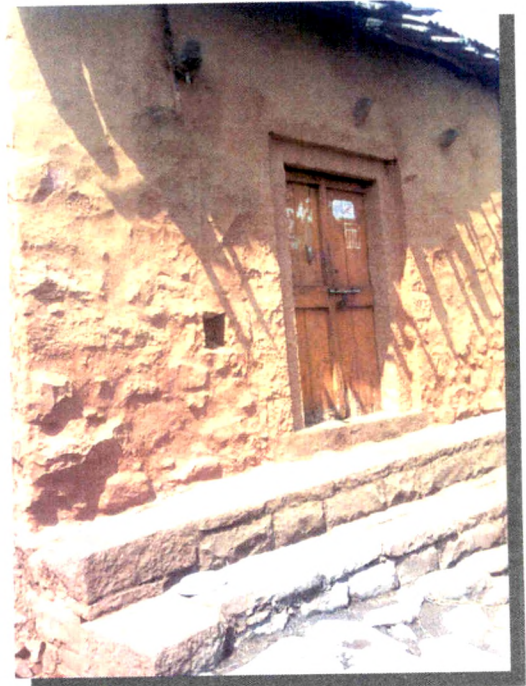
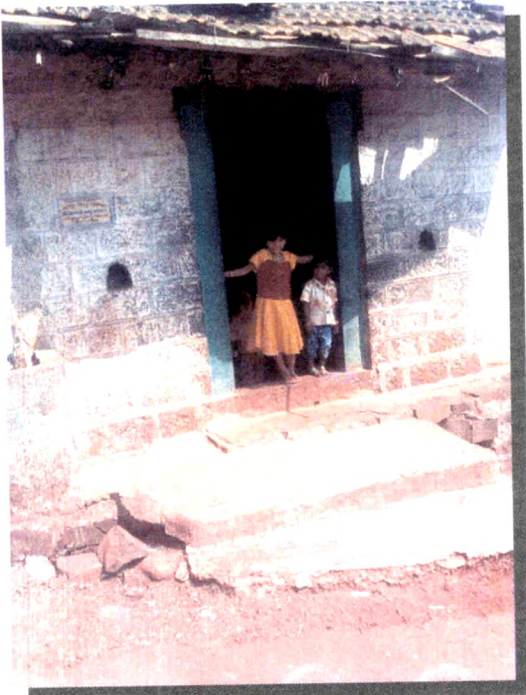


Photo : 15 & 16 Typical Congested Entrance of Rural House

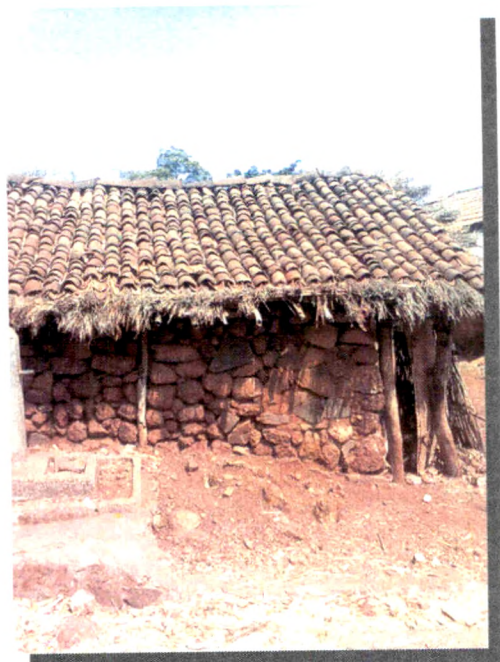
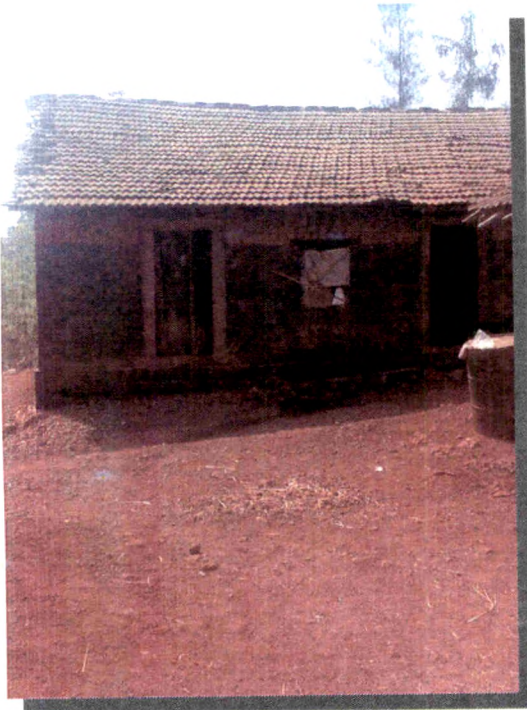


Photo : 17 & 18 A Typical Thatched Walls and Tiles on Roof



Photo : 19 Village Women Drafting
Water From Open Well



Photo : 20 Mount of Dung Cake
Used as Domestic Fuel



Photo : 21 Open Drainage Gutters at Jakhale



Photo : 22 Worshipping Stones (Matrika)



Photo : 23 Village Idol (Maruti Mandir)



Photo : 24 Severe Land Sliding at Masai Plateau



Photo : 25 Land Sliding Prone Zone at Panhala Fort



Photo : 26 Slope Disturbance along the Road



Photo : 27 Severe Land Sliding Zone along the Masai Plateau.