

PHOTO PLATES

PHOTO PLATE : 1



1.1 Researcher at check post with Forest Guard.
Date of visit - 26/08/2007
16°23'35" -N, 73°51'82" -E
Elv. 577 mts.



1.2 Backwater of Radhanagari Dam.
Date of visit - 19/01/2008
16°22'30.94" -N, 73°52'20.75" -E
Elv. 620 mts.



1.3 Sadas & Dangs (plateau & thick forested patches and bare surface)
Date of visit - 02/09/2007
16°27'48.46" -N, 73°54'31.33" -E
Elv. 825 mts.



1.4 Connecting villages with moterways.



1.5 Villagers passing through Sanctuary.



1.6 Researcher with aborigin (shepherd)

PHOTO PLATE : 2



2.1 Surveying.
Date of visit - 19/01/2008
16°23'36.15" -N, 73°53'08.93" -E
Elv. 618 mts.



2.2 Natives with their characteristic dwelling.



2.3 Thick jungle hide ways.



2.4 Some jungle habitat of man with non-conventional energy source.
Date of visit - 02/09/2007
16°25'50.09" -N, 73°53'13.53" -E
Elv. 914 mts.



2.5 Potential deposits of Bauxite.
Date of visit - 02/09/2007
16°26'08.13" -N, 73°55'37.92" -E
Elv. 668 mts.



2.6 Water rapids at hill slope.

PHOTO PLATE : 3



3.1 *Asparagus racemosus*, Shatavari Medicinal Plant



3.2 *Burmania coelestis*, seasonal plant



3.3 *Ceropegia fantastica*, Endemic plant tubers are eaten by animals.



3.4 *Asystasia violacea*, seasonal plant



3.5 *Carissa*, Karvand, a luscious sweet fruits



3.6 *Cleome gynandra*, ornamental plant

PHOTO PLATE : 4



4.1 Commelina flourish in monsoon



4.2 Cyanotis fasciculata, seasonal plant



4.3 Cyperus



4.4 Eriocaulon an endemic plant



4.5 Eriocaulon, Smithia & Rhynocoglossum obliquum



4.6 Exacum tetragonum

PHOTO PLATE : 5



5.1 Extensive Meadows on plateau top



5.2 Hubbardia heptaneuron, Endemic, critically endangered.



5.3 Indigofera dalzellii, Endemic plant.



5.4 Jansenella griffithiana, wheat family



5.5 Jansenella griffithiana in mass



5.6 Murdannia, seasonal plant

PHOTO PLATE : 6



6.1 Pogostemon deccanensis in mass.



6.2 Nothopodytes nimmoniana, Narkya- most demanded in international market.



6.3 Pogostemon deccanensis, Endemic plant.



6.4 Polyporous, Fungus an element of biodiversity



6.5 Rotala densiflora



6.6 Rhyncoglossum obliquum

PHOTO PLATE : 7



7.1 Severe Fluvial Erosion.



7.2 *Smithia*



7.3 Species biodiversity on the hill slope.



7.4 *Strobilanthes sessile* var. *ritchii*, Endemic.



7.5 Symbiosis of diversified plant species.



7.6 *Utricularia*

PHOTO PLATE : 8



8.1 *Utricularia praterita*



8.2 *Utricularia reticulata*



8.3 *Utricularia* Sp., Insectivores plant.



8.4 Wild habitat of Scorpio.



8.5 Diversified Plants identified during field work.
Date of visit - 26/08/2007
16°23'36.9 -N, 73°50'58.1 -E
Elv. 613 mts.



8.6 Parasite climbers.

PHOTO PLATE : 9



9.1 Herd of Bison located at their distinct habitat
Date of visit - 02/09/2007
16°26'01.3" -N, 73°52'12.7" -E
Elv. 901 mts.



9.2 Herd of Bison in their different behavioural habitats
Date of visit - 02/09/2007
16°26'01.3" -N, 73°52'12.7" -E
Elv. 901 mts.



9.3 Grazing Bison
Date of visit - 02/09/2007
16°26'01.3" -N, 73°52'12.7" -E
Elv. 901 mts.



9.4 Stud Bison
Date of visit - 02/09/2007
16°26'01.3" -N, 73°52'12.7" -E
Elv. 901 mts.



9.5 Bison with its prominent head
Date of visit - 02/09/2007
16°26'01.3" -N, 73°52'12.7" -E
Elv. 901 mts.



9.6 Bisons are seen at their habitat

SANB. BALASUBRAMANIAM LIBRARY
SHIVAJI UNIVERSITY
TIRUNELVELI

PHOTO PLATE : 10



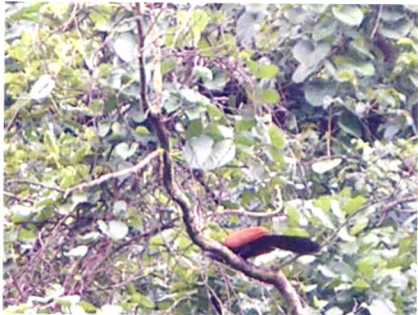
10.1 Ant mount - diversified habitat of insects.
Date of visit - 19/01/2008
16°24'33.97" -N, 73°52'55.75" -E
Elv. 885 mts.



10.2 Moss accumulated trees. (Particularly in the rainy season)



10.3 Foot prints of undergrown Bison.
Date of visit - 02/09/2007
16°25'35" -N, 73°51'82" -E
Elv. 577 mts.



10.4 A bird: Skylark.



10.5 Bird having ground nest.

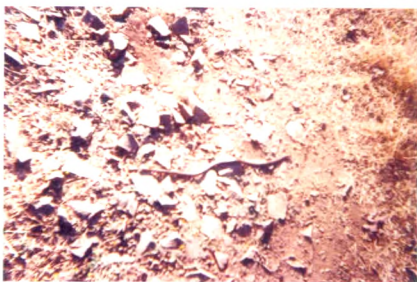


10.6 A coloured Crab an element of rich bio-diversity.

PHOTO PLATE : 11



11.1 Green Snake (Haran Tol)



11.2 Snake, Reptile



11.3 Eroded jungle ways.
Date of visit - 19/01/2008
16°23'41.3 -N, 73°51'19.5 -E
Elv. 591 mts.



11.4 Landslide along the road frequently causes blockage of the road.



11.5 Severe land degradation caused by subsequent stream.



11.6 Paddy cultivation invitation to agriculture tourism.
Date of visit - 02/09/2007
16°24'20.55 -N, 73°54'26.25 -E
Elv. 623 mts.

PHOTO PLATE : 12



12.1 Deforestation by forest cutting.



12.2 Tree cutting along the slope causing slope disturbance.



12.3 Shepherd with grazing herds.



12.4 An islet in Laxmi reservoir, habitat of many distinguished plants species.



12.5 Bhogawati with its braided channel.



12.6 A back water pond ecosystem of Radhanagari Dam.
Date of visit - 02/09/2007
16°24'36.88" -N, 73°56'56.70" -E
Elv. 668 mts.

PHOTO PLATE : 13



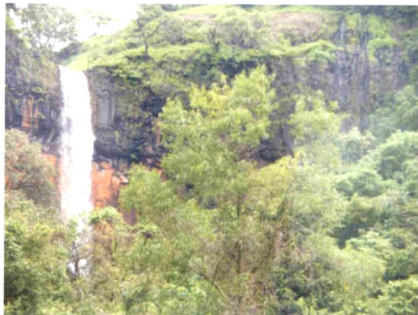
13.1 Trees rising high to seek sun light.



13.2 Water discharge from dam causing channel erosion.



13.3 Bare plateau top (Sada)
Date of visit - 02/09/2007
16°29'45.05" -N, 73°54'36.54" -E
Elv. 688 mts.



13.4 Rautwadi waterfall an attraction for eco-tourism.
Date of visit - 02/09/2007
16°25'39.55" -N, 73°57'14.37" -E
Elv. 724 mts.



13.5 Leach bite most common in rainy season.



13.6 Leaches