

FIGURES

Fig. IV.1. Seasonal percentage Pie-chart of each spore group and other group to the total airspora during the period of 1st November 2007 to 15th June 2008.

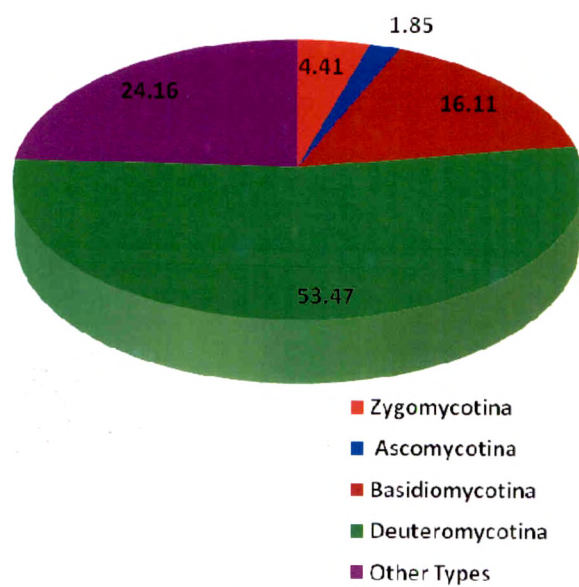


Fig. IV. 2. Percentage contribution of each spore group and other group during 1st November 2007 to 28th February 2008 over Wheat field.

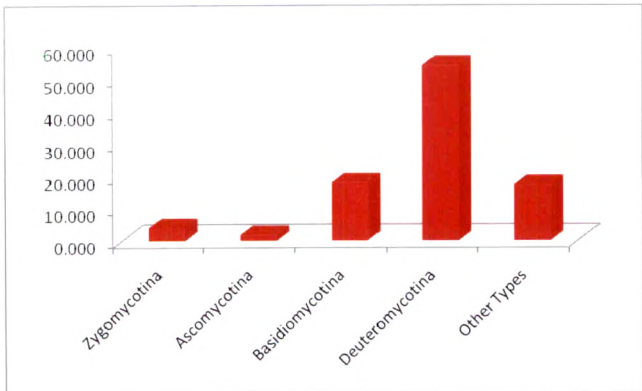


Fig. IV.3. Percentage contribution of each spore group and other group during 1st March 2008 to 15th June 2008 over Groundnut field.

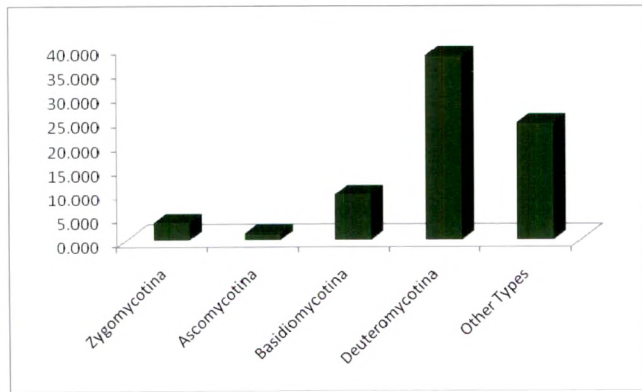


Fig. IV. 4. Monthly variations in concentration of each spore group and other group during 1st November 2007 to 15th June 2008

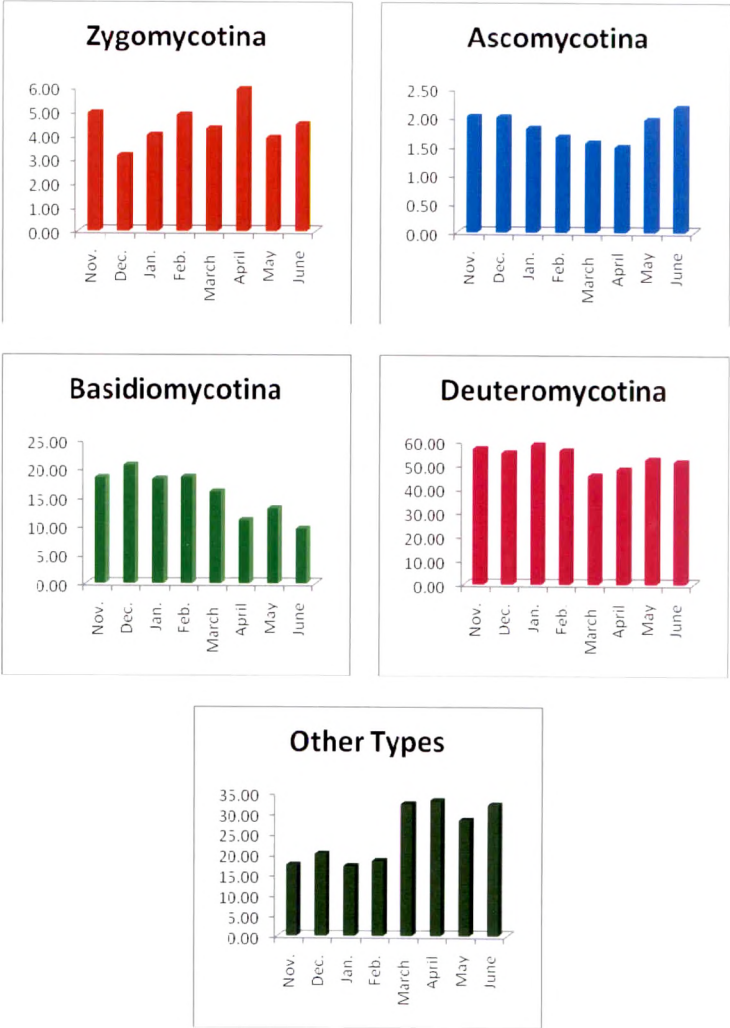


Fig. IV.5. Monthly Variations of Temperature, Humidity and Rainfall

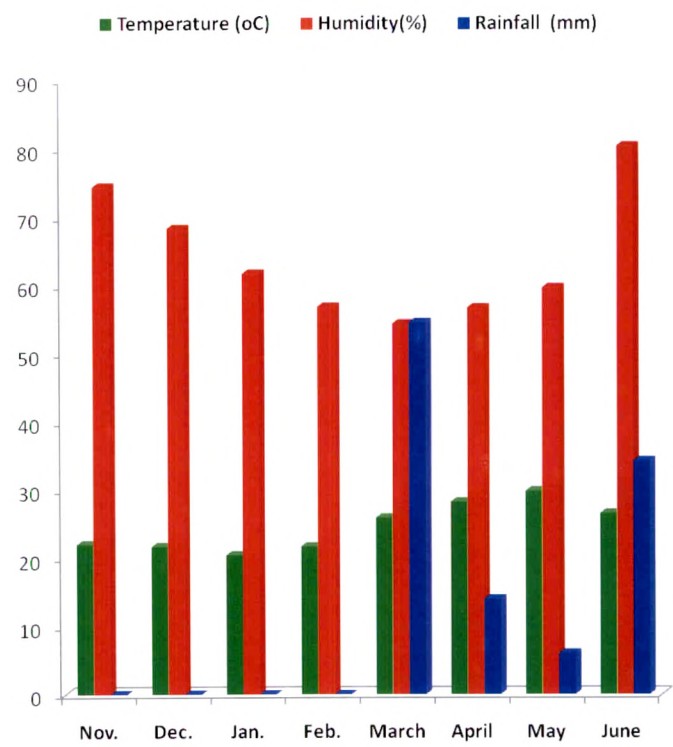
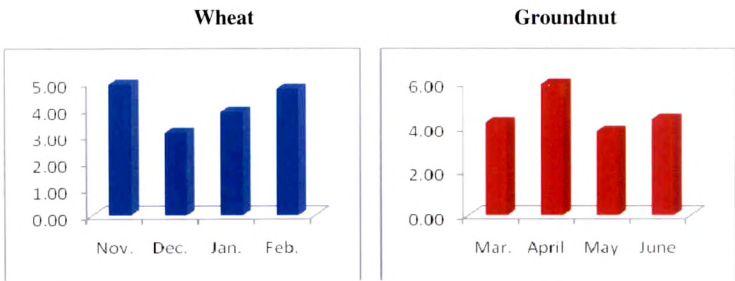


Fig. IV.6. Monthly Variations in concentration of *Sclerospora* (Oospores)



Seasonal variations of *Sclerospora* (Oospores) during 1st November 2007 to 15th June 2008

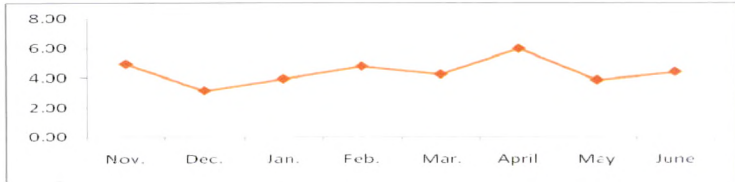
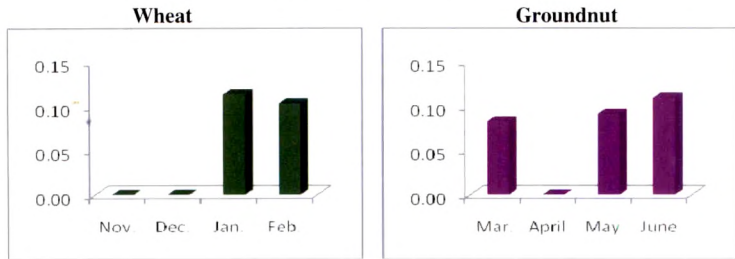


Fig. IV.7. Monthly Variations in concentration of *Cunninghamella*



Seasonal variations of *Cunninghamella* during 1st November 2007 to 15th June 2008

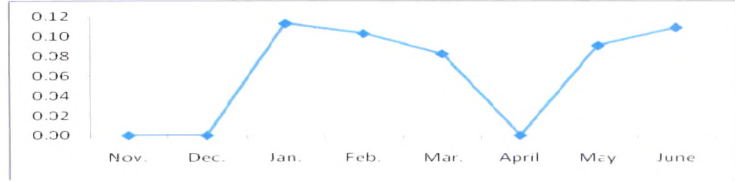
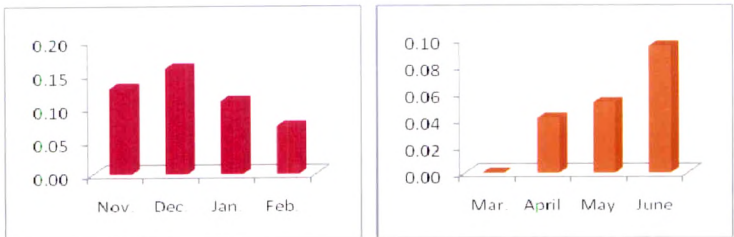


Fig. IV.8. Monthly Variations in concentration of *Bitrimonospora*
Wheat Groundnut



Seasonal variations of *Bitrimonospora* during 1st November 2007 to 15th June 2008

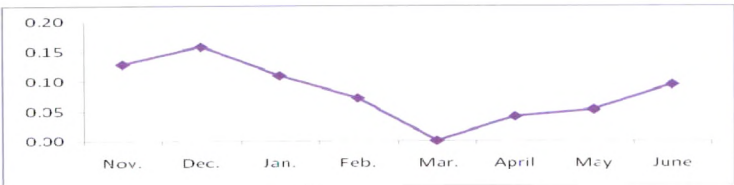
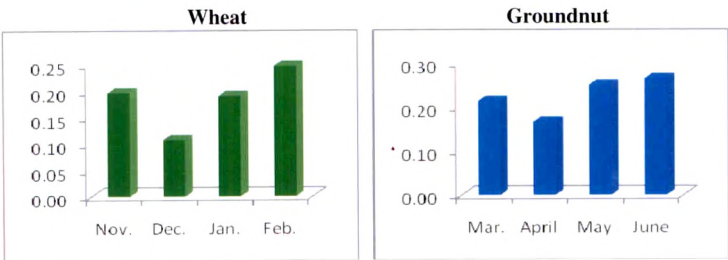


Fig. IV.9. Monthly Variations in concentration of *Chaetomium*



Seasonal variations of *Chaetomium* during 1st November 2007 to 15th June 2008

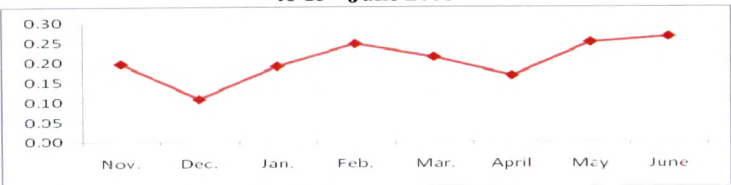


Fig. IV.10. Monthly Variations in concentration of *Hypoxyton*

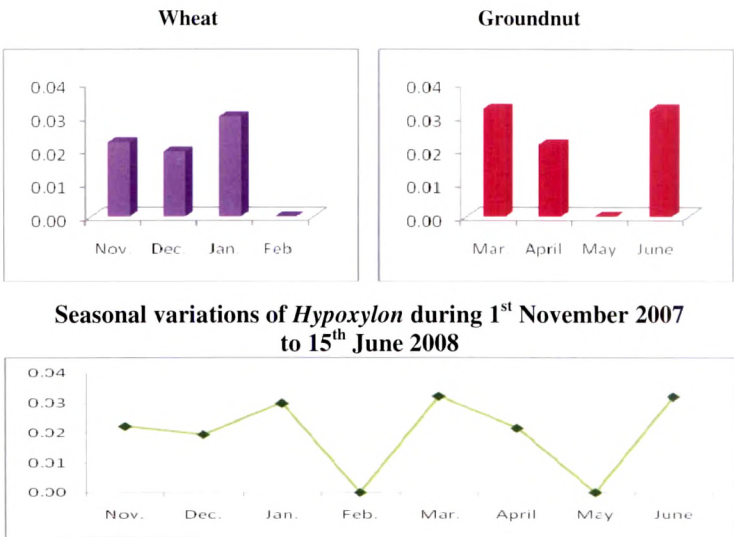


Fig. IV.11. Monthly Variations in concentration of *Hysterium*

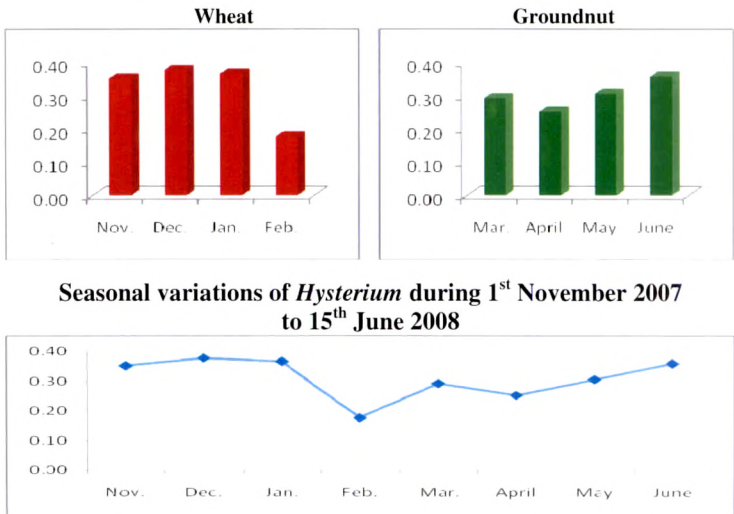


Fig. IV.12. Monthly Variations in concentration of *Leptosphaeria*

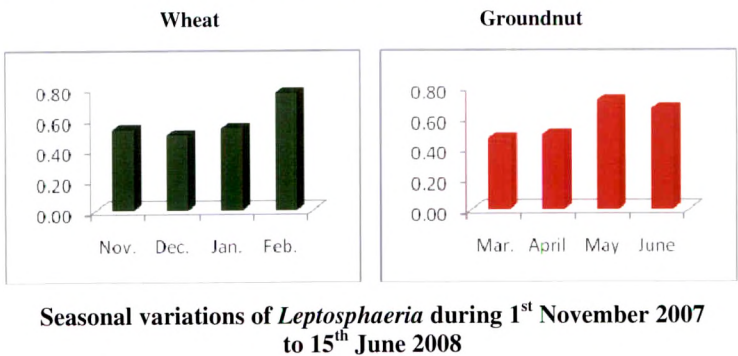


Fig. IV.13. Monthly Variations in concentration of *Pleomassaria*

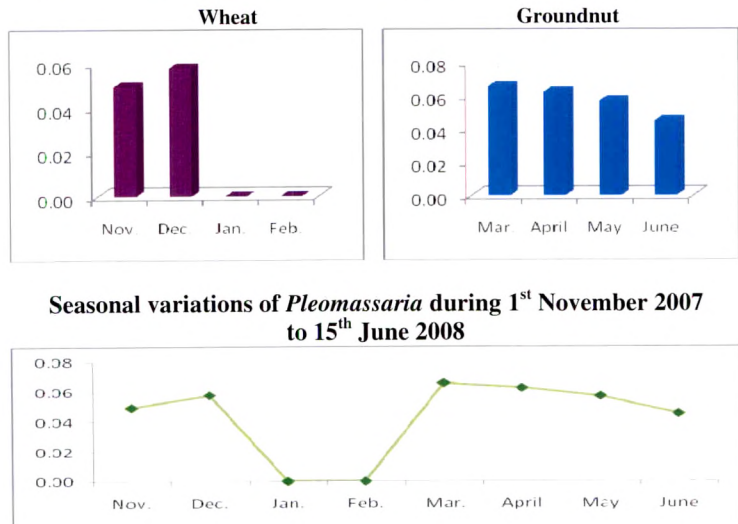


Fig. IV.14. Monthly Variations in concentration of *Sporormia*

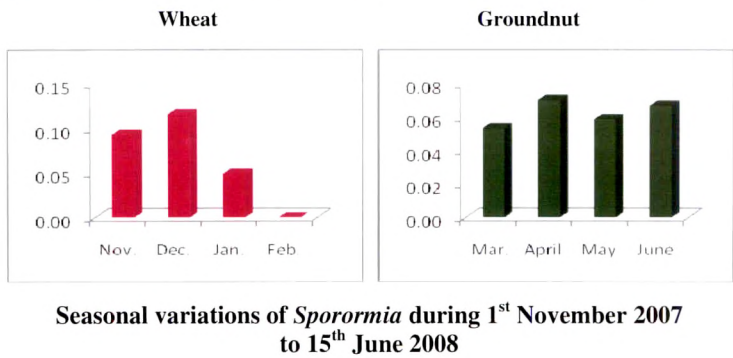


Fig. IV.15. Monthly Variations in concentration of *Teichospora*

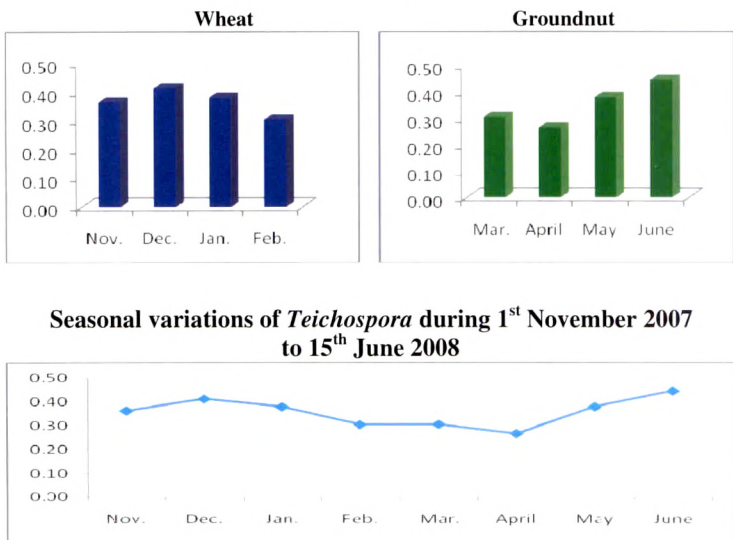
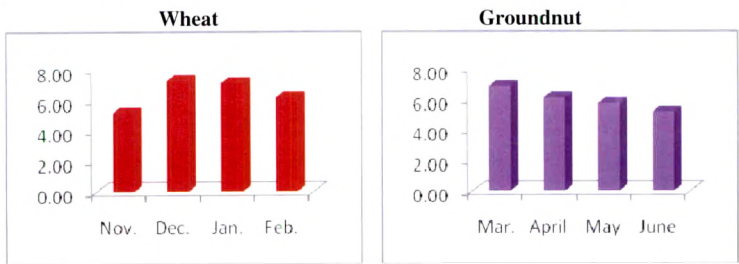


Fig. IV.16. Monthly Variations in concentration of Uredospores



Seasonal variations of Uredospores during 1st November 2007 to 15th June 2008

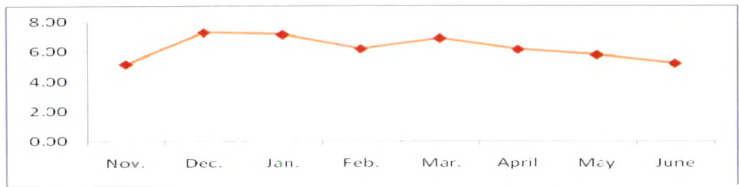
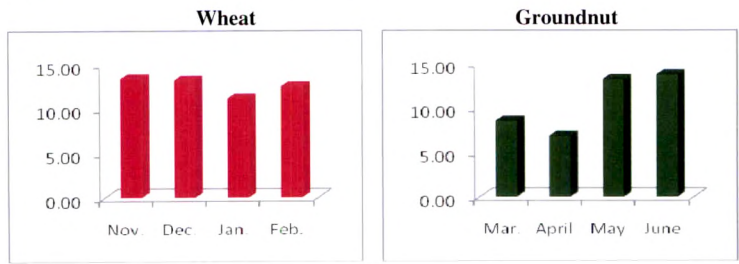


Fig. IV. 17. Monthly Variations in concentration of Smut spores



Seasonal variations of Smut spores during 1st November 2007 to 15th June 2008

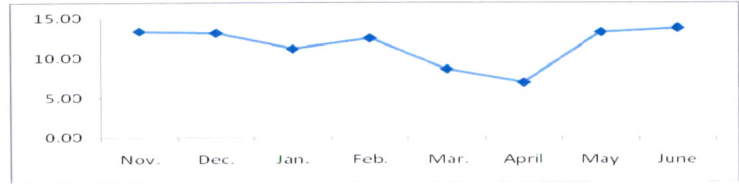


Fig. IV.18. Monthly Variations in concentration of *Alternaria*

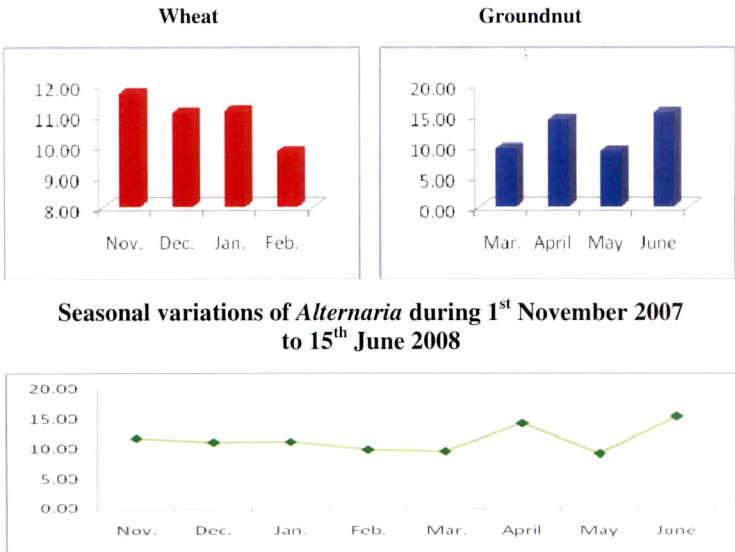


Fig. IV.19. Monthly Variations in concentration of *Beltrania*

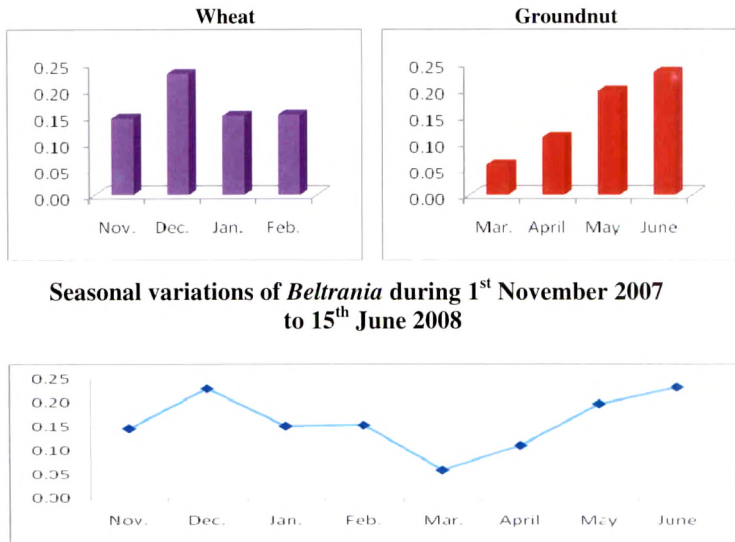


Fig. IV.20. Monthly Variations in concentration of *Bispora*

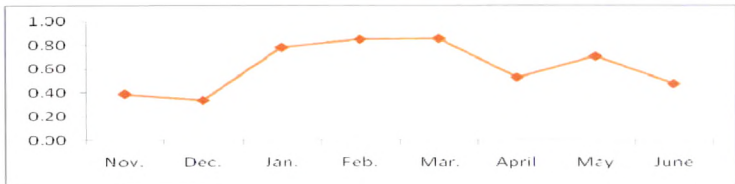
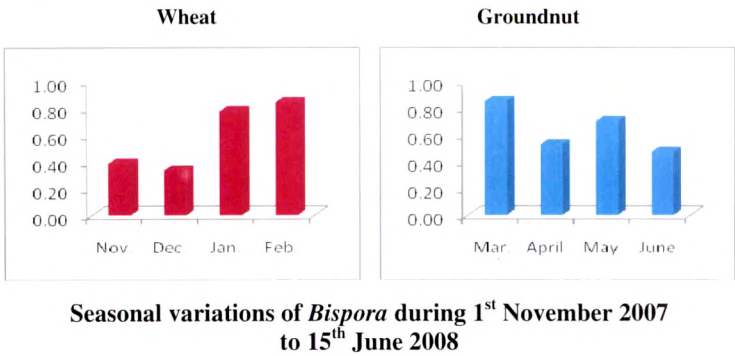


Fig. IV.21. Monthly Variations in concentration of *Botryodiplodia*

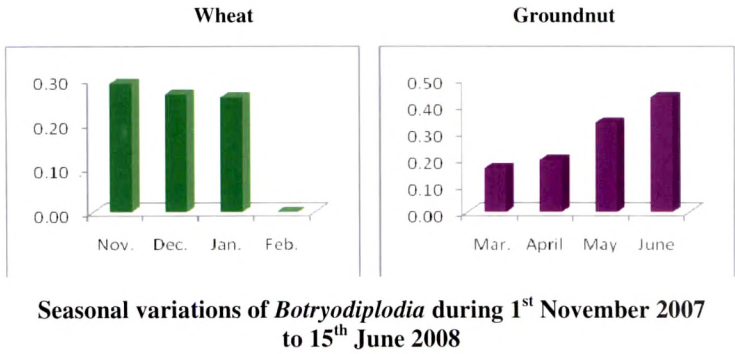


Fig. IV.22. Monthly Variations in concentration of *Cercospora*

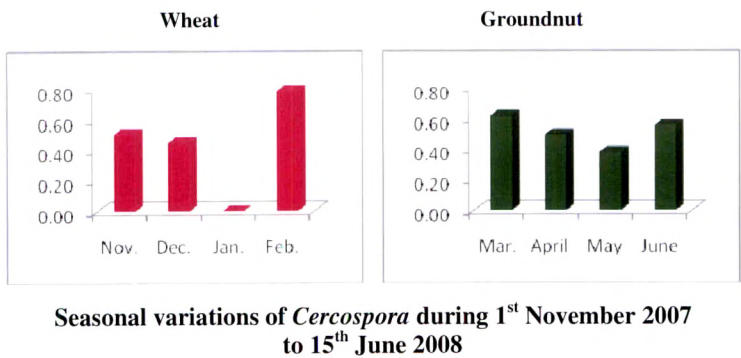


Fig. IV.23. Monthly Variations in concentration of *Cladosporium*

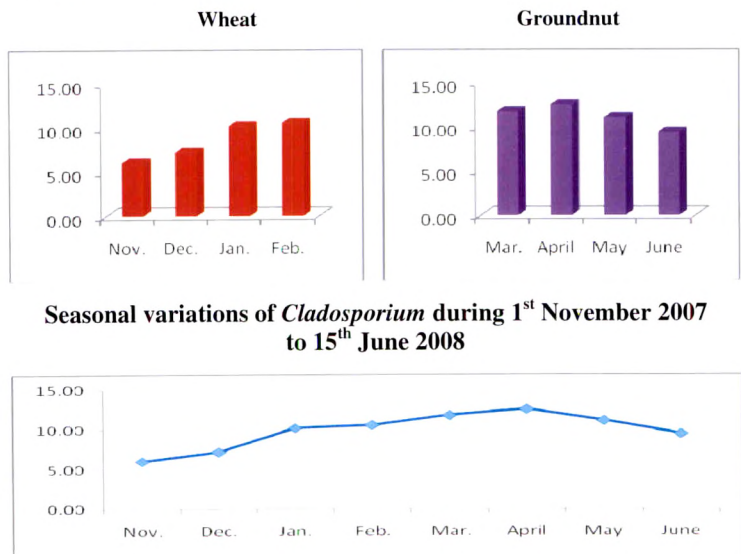
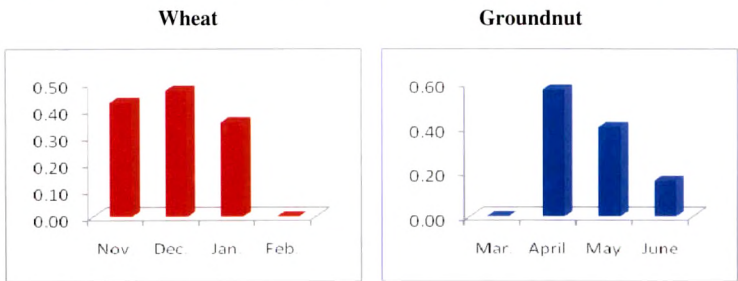


Fig. IV.24. Monthly Variations in concentration of *Corynespora*



Seasonal variations of *Corynespora* during 1st November 2007 to 15th June 2008

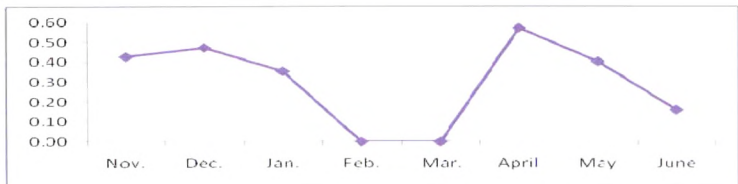
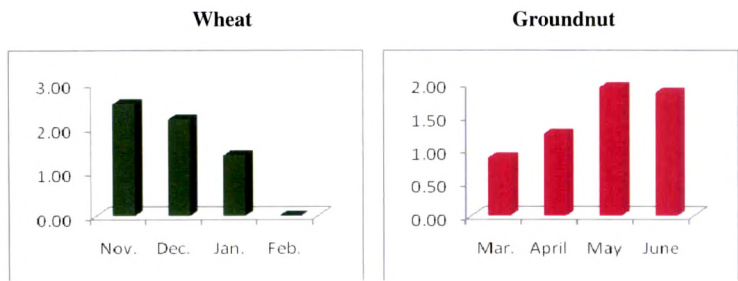


Fig. IV.25. Monthly Variations in concentration of *Dictyoarthrinium*



Seasonal variations of *Dictyoarthrinium* during 1st November 2007 to 15th June 2008

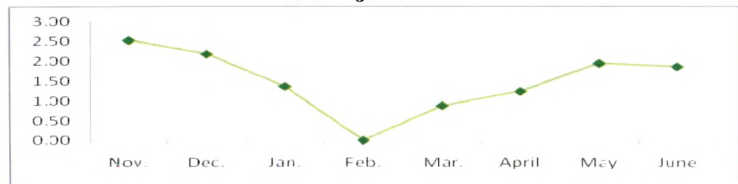


Fig. IV.26. Monthly Variations in concentration of *Fusariella*

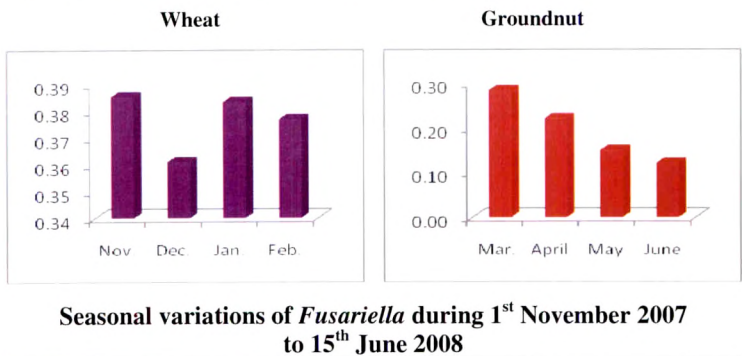


Fig. IV.27. Monthly Variations in concentration of *Helminthosporium*

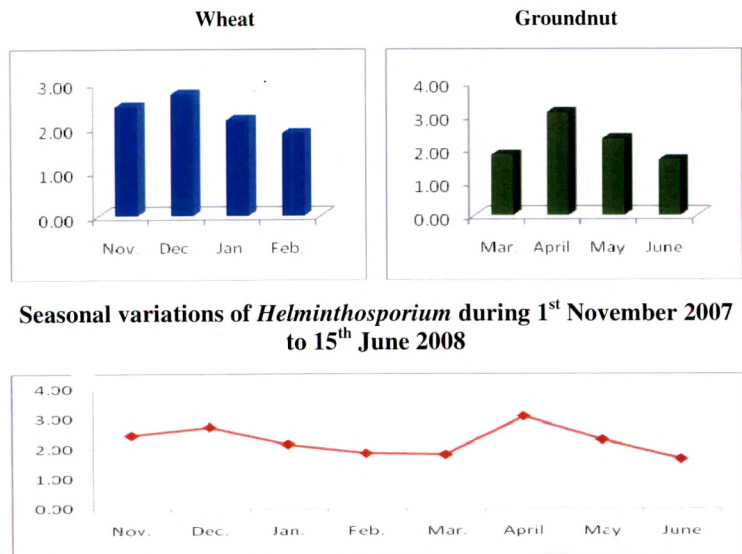


Fig. IV.28. Monthly Variations in concentration of *Nigrospora*

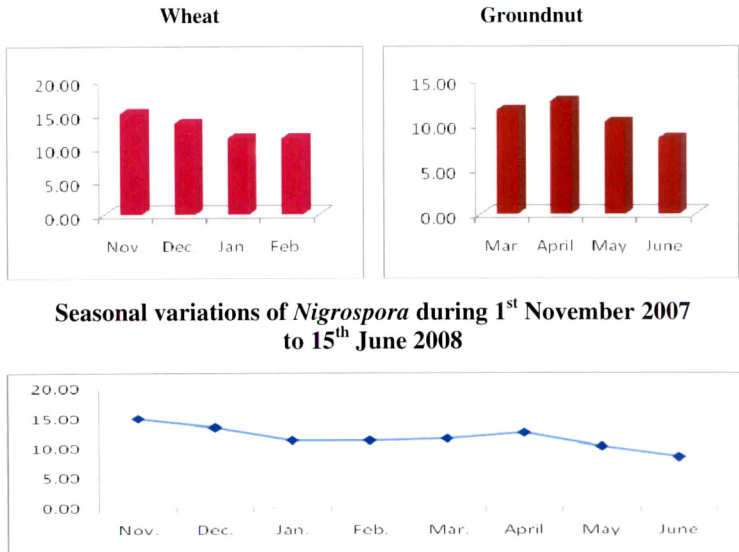


Fig. IV.29. Monthly Variations in concentration of *Phaeotrichoconis*

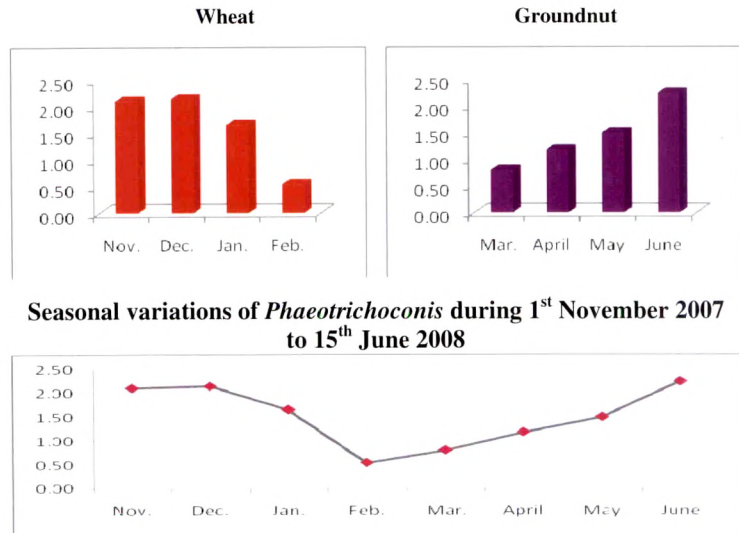


Fig. IV.30. Monthly Variations in concentration of *Sporidesmium*

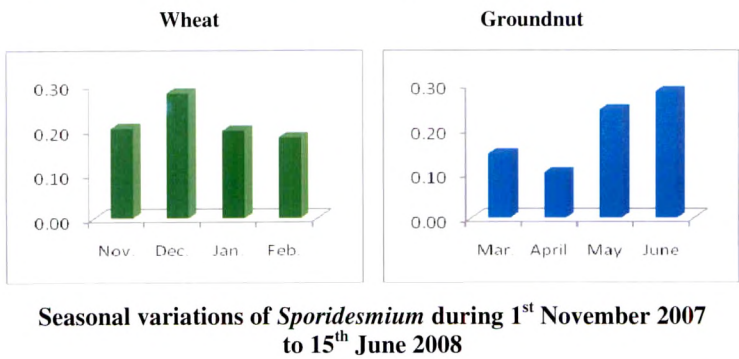


Fig. IV.31. Monthly Variations in concentration of *Torula*

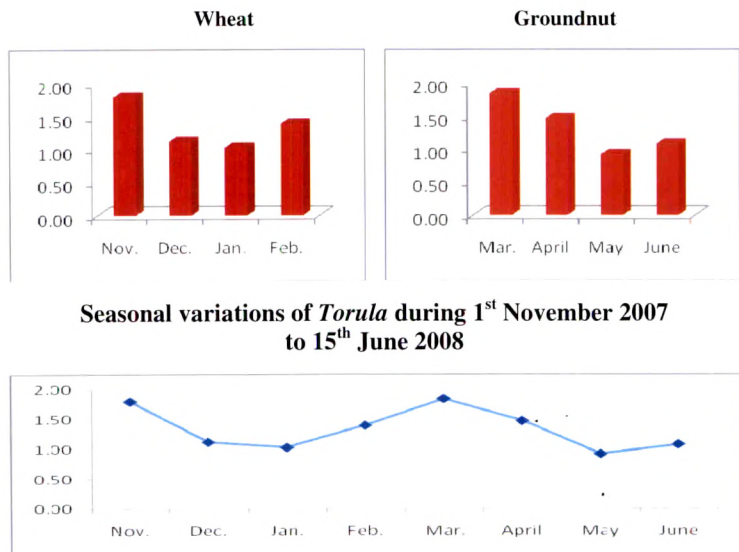
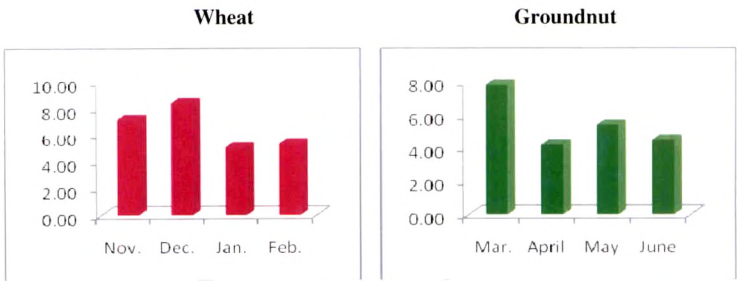


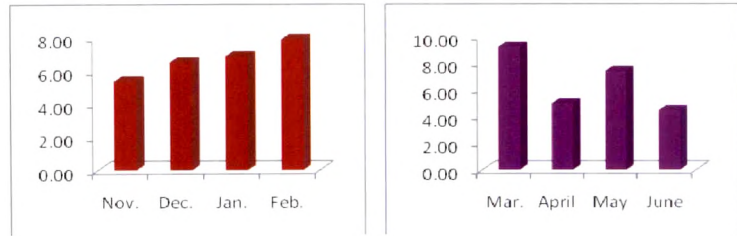
Fig. IV.32. Monthly Variations in concentration of Hyphal Fragments



Seasonal variations of Hyphal Fragments during 1st November 2007 to 15th June 2008



Fig. IV.33. Monthly Variations in concentration of Pollen Grains



Seasonal variations of Pollen Grains during 1st November 2007 to 15th June 2008

