

PHOTOGRAPHS

Plate 4.1 : Terrace topography with distinct mesa landform
with three lava flows.

Plate 4.2 : Close view of part of mesa landform. Slope of
the mesa landform is concave.

Plate 4.3 : Close sectional view of butte landform. Top of this landform show compact, massive basalt with vertical fracture, lying on the pink zeolitic basalts lower lava flow.

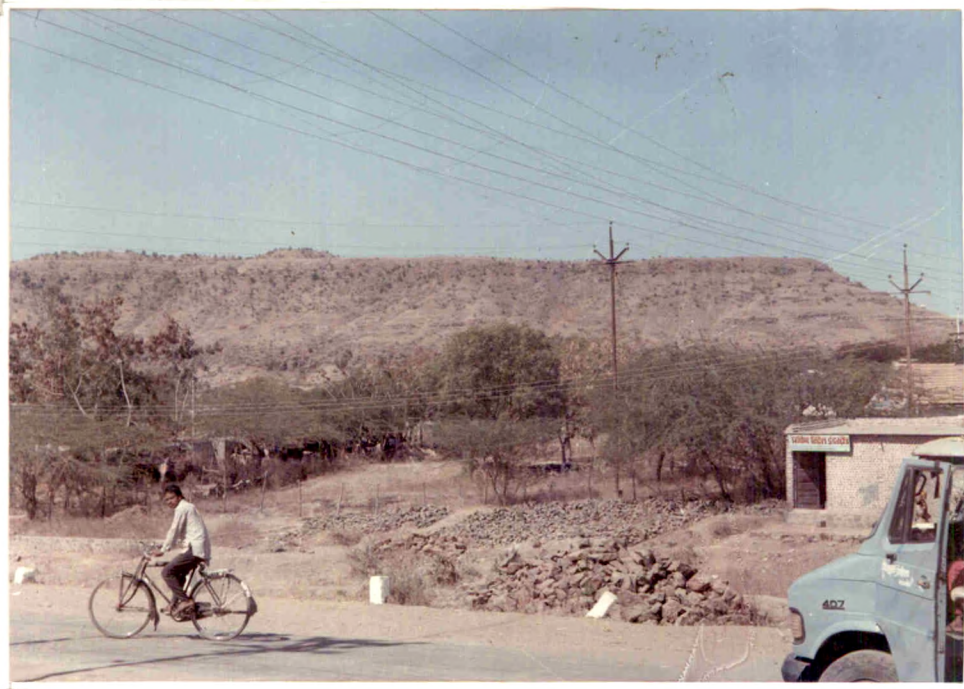
Plate 4.4 : Part of the Anjan river valley which is under cultivation.

Plate 4.5 : Soil profil in the section of a trench driven across Anjan river. Base of trench show medium to coarse sandy material finer sand and silt towards top.

Plate 4.6 : Horizontal contact between lower flow and upper flow located by upper massive basalt lying on the pink zeolite basalt.

Plate 4.7 : Photograph of hand specimen of vesicular,
amygdoloidal basalt vesicicals and amygdals
are spherical to spheriodal in shape.

Plate 4.8 : Road section cut through basalt section which
is weathered. At top section shown prominent
vertical joints.









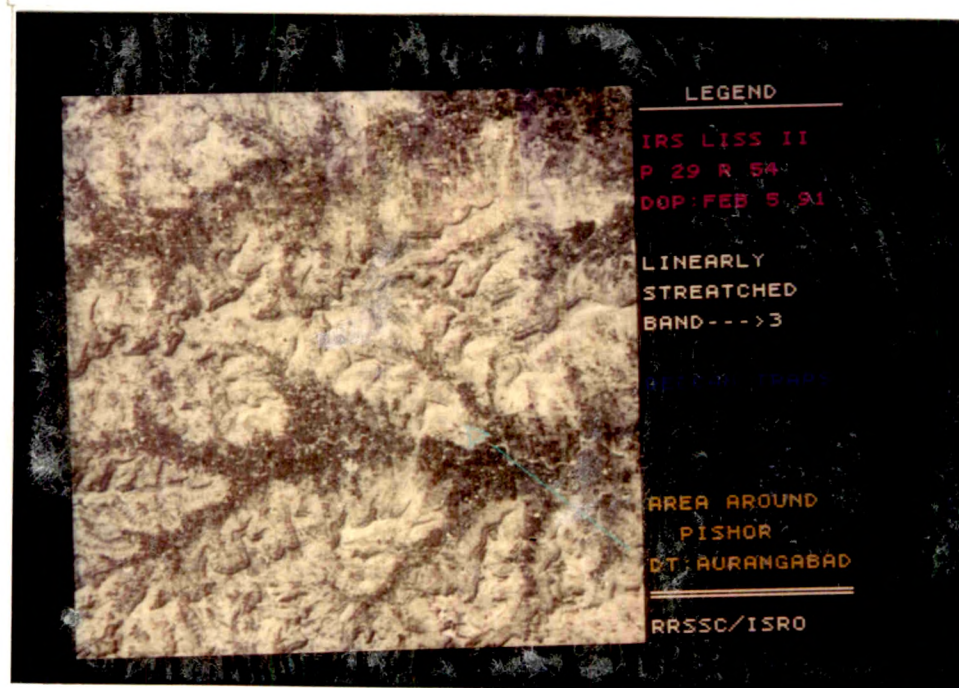


PLATE 2.3

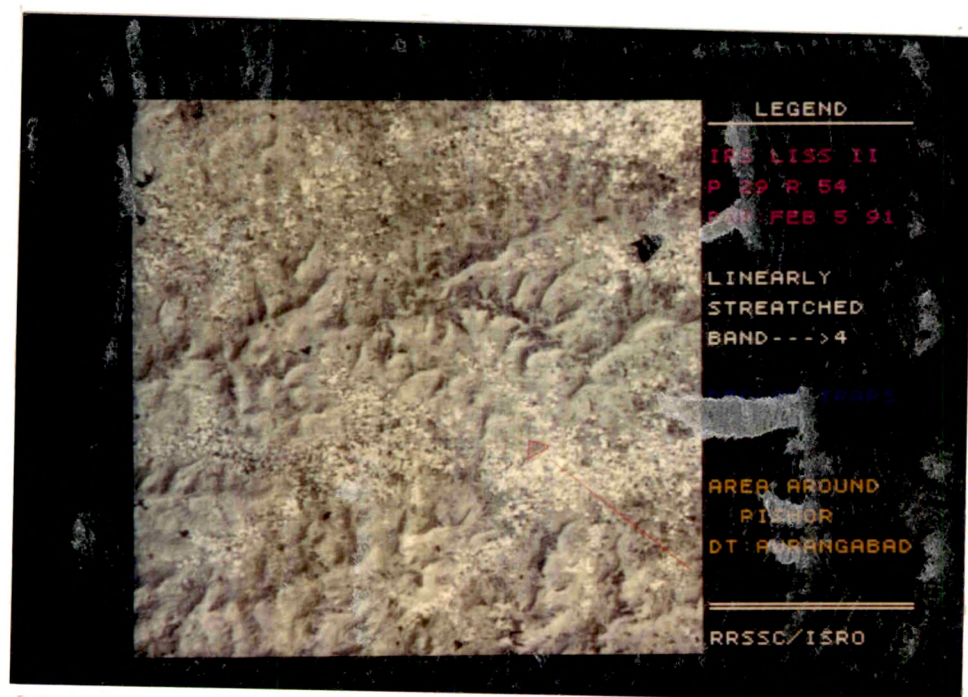


PLATE 2.4

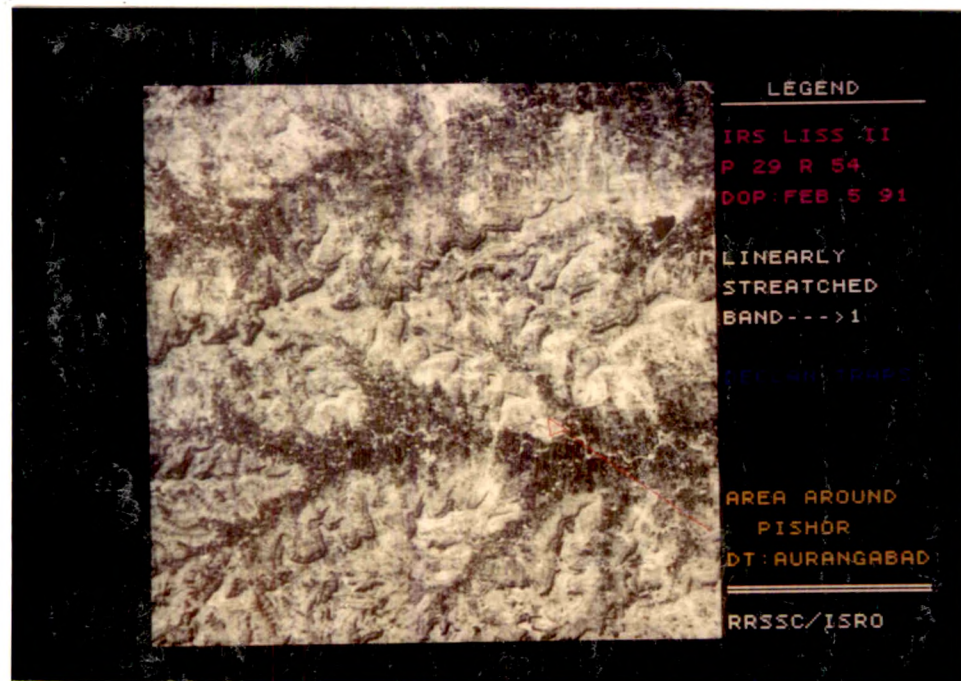


PLATE 2.1

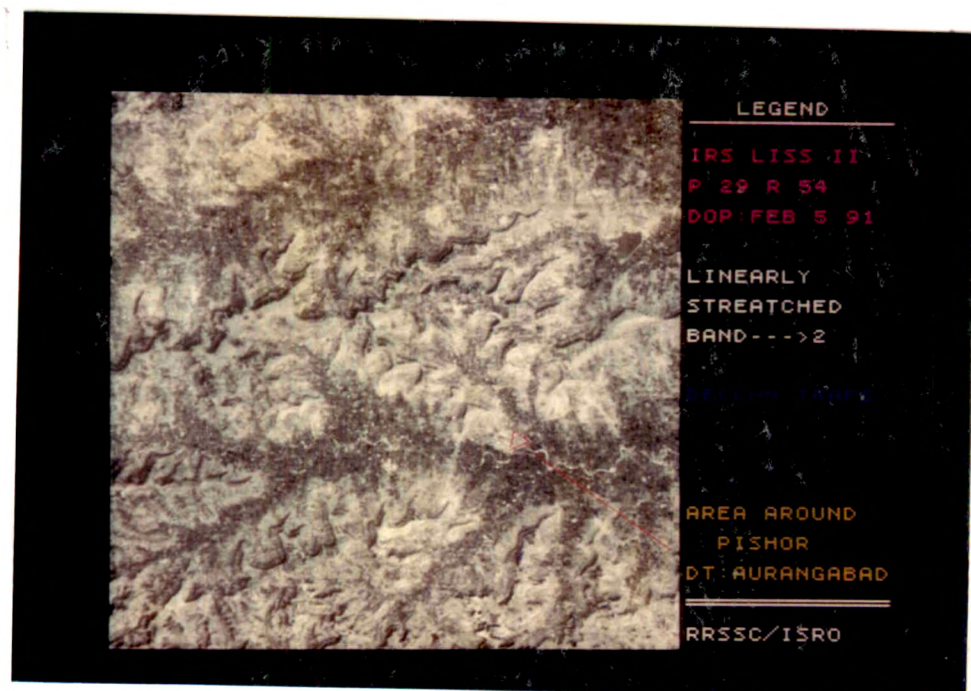


PLATE 2.2.

LEGEND

CELL 155 11

CELL 154 54

CELL 153 91

LINEARLY
STRETCHED
STANDARD FCC

SO 4 --- RED

SO 3 --- GREEN

SO 2 --- BLUE

AREA AROUND

PISHOR

DT : AURANGABAD

RASSC/ISRO



PLATE 2.5