

Chapter- III

Profile of the Organisations

CHAPTER III

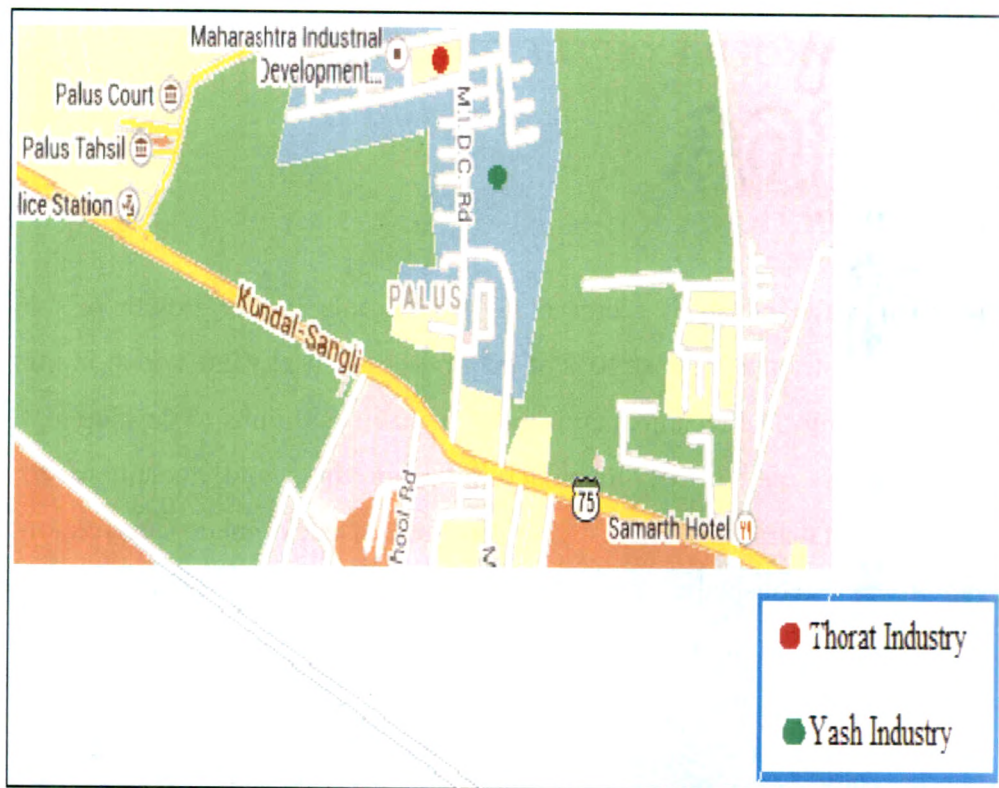
PROFILE OF THE ORGANIZATION

3.1 INTRODUCTION:

The small scale industries sector plays a vital role in the growth of the country. It contributes almost 40% of the gross industrial value added in the Indian economy. The technical assistance to enable SSI units to develop and improve their method of manufacture, marketing, and technique of production. Maharashtra Small Scale Industries Development Corporation Limited was established in 1962. The basic objective was to help the small scale industries to develop. Considering the international standards facilities required to attract multinational companies five star industrial areas are developed by MIDC at nice location in Maharashtra. Maharashtra in first position in India for the highest productivity, economics performance, business efficiency, Government efficiency, infrastructures and overall competitiveness. Small scale industries have a significant role in the Indian economy in view of its contribution to production.

Now a day's SSIs has been applied in a wide range of activities such as technique production, distribution, suppliers, marketing and any other range. There are two different small scale industries are included in samples of the present study. These are Thorat industry Palus and Yash Industry Palus. These Industries however are different as to their age and size of the Industries. The selected two industries are from Palus Taluka. These Industries are different product makers, Thorat Industry has Various Types of water Valves, oil engines, and Machinery spare parts. and Yash Industry has Pump Shafts (up to 250 dia and 400 mm length), Shafts sleeves, Coupling, Impeller adj.nut, Volvo Spindless / Shafts up to 400 mm dia and 3500 mm.l etc. So researcher has been selected two small scale industries for the comparative research study.

3.2 MAP OF BOTH INDUSTRY:



3.3 PROFILE OF THE THORAT INDUSTRY:

Palus is a Tahsil in Sangli District and is in Maharashtra State in India. Palus has an industrial area called Palus MIDC and it is the Biggest asset for Palus. Which holds major components of manufacturing and foundry process. Palus is 30 km from its main city Sangli. Palus Taluka is situated in north west part of Sangli District. Agriculture is the main occupation of peoples in Palus Taluka.

A) Establishment of Thorat industry:

The Thorat industry established on 1 March 2001. It is situated in Plot no 120/128 Dr. Patangrao Kadam industrial estate Palus Dist- Sangli, Pine-416310 (Maharashtra) this industry registered in the Office- 857 Shaniwar Peth, Satara. Phone no- 02162-231664 the operational area of Thorat industry entire Maharashtra state in India.

General information

Name of the industry	Thorat Industry Palus.
Plant Location	Plot no 120/128, Palus industries estate, Palus, Dist- Sangli-416310 Cont no-02346-226287, Fax no- 02346-228460.
Date of Establishment	1 March 2001
Office Address	Thorat Enterprises 857, Shaniwar Peth, Satara – 415002 ph. (02162) 234718
Total Staff	45
Fax No	02346-228460
CST No	27160022170C
VAT No	27160022170V
Weekly off	Tuesday

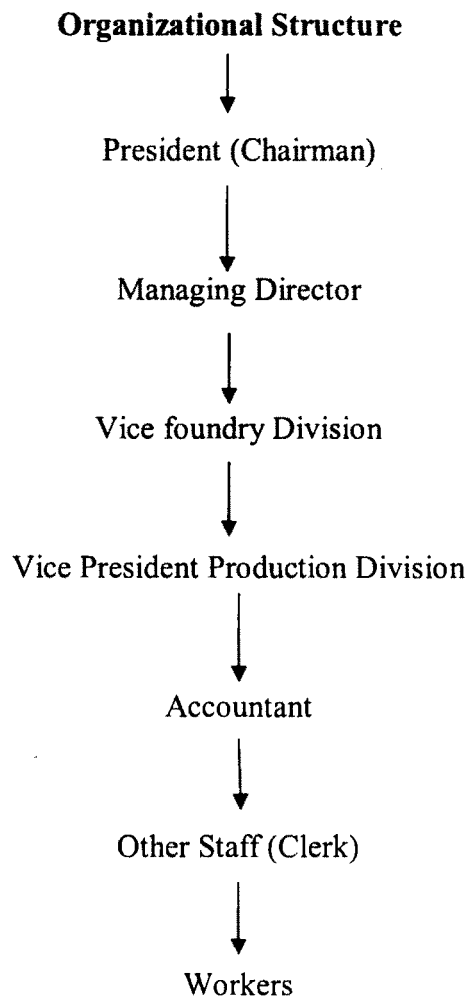
(Source: Profile of the Thorat Industry in Palus)

B) Tools and Techniques of the Thorat industry:

- 1) To set a good of producing defects free product by the manufacturing set – ups and techniques upgrading human resources by extensive training at all levels.
- 2) Reduction in manufacturing cost through continuous improvement, product adoption of affordable technologies and cost effective manufacturing process.

C) Organizational Structure of the Industry:

The Thorat industry has a straight line organization structure. At top there is president (Chairman) and managing director and middle management there is vice foundry division and vice production division and lower level management these are accountant, clerk, and other workers etc. The Thorat industries organization structure is as follows.



D) Performance of the Thorat Industry:.

a) Turnover of the Thorat industry:

The turnover position of the Thorat industry shows in the following table during 2008-09 to 2012-13.

Table No 3.1
Turnover of the Thorat industry

Year	Turnover/Sales	Increase / Decrease
2008-2009	2,72,31,492	Increase
2009-2010	2,34,97,108	Decrease
2010-2011	3,46,64,328	Increase
2011-2012	3,56,15,169	Increase
2012-2013	3,44,59,548	Decrease

(Sources: Annual Report of Thorat Industry from Year 2008-09 to 2012-13)

The above table shows that turnover of the Thorat industry is continuously growing over a period of 5 Years from 2008-09 to 2012-13. In the year 2008-09 it was 2,72,31,492, in the year 2009-10 it was reduced to 2,34,97,108. But in the year 2010-11 it was reached to 3,46,64,328. In the year 2011-12 it was reached to 3,56,15,169. In the next year 2012-13 it was decrease to 3,44,59,548.

b) Inventory of the Thorat Industry:

Table No 3.2
Inventory of the Thorat Industry

Year	Inventory	Increase / Decrease
2008-2009	13,92,295	Increase
2009-2010	15,07,434	Increase
2010-2011	11,91,284	Decrease
2011-2012	37,58,950	Increase
2012-2013	35,28,950	Decrease

(Sources: Annual Report of Thorat Industry from Year 2008-09 to 2012-13)

The above table shows that inventory of the Thorat industry from 2008-096 to 2012-13. In the year 2008-09 it was 13,92,295. In the year 2009-10 it was increased to 15,07,434. But in the year 2010-11 it was reduced and become 11,91,284. In the year 2011-12 it was increased to 37,58,950. In the next year 2012-13 it was reduced become 35,28,950.

c) Profit of the Thorat Industry:

The net profit position of the industry shows in the following table during 2008-09 to 2012-13.

Table No 3.3
Profit of the Thorat Industry

Year	Net Profit	Increase / Decrease
2008-2009	4,06,600	Increase
2009-2010	4,08,251	Increase
2010-2011	12,85,639	Increase
2011-2012	12,77,192s	Increase
2012-2013	13,04,221	Increase

(Sources: Annual Report of Thorat Industry For the Year 2008-09 to 2012-13.)

The above table shows that profit of the Thorat industry from 2008-09 to 2012-13. In the year 2008-09 it was 4,06,600. In the year 2009-10 it was increased become 4,08,251. In the year 2010-11, 2011-12, 2012-13 it was continuously growing of the profit in the year to year.

E) Services to Customers:

Thorat industry Palus is providing following services to the customers.

- 1) The industry provide warrantee of the products supplied to the customers.
- 2) The industry provide replacement facility to the customers.
- 3) Thorat industry provide products timely to the customers according to their requirements.
- 4) Thorat industry provide good quality products to the customers.

F) Bankers of the Thorat Industry:

Bankers of the Thorat industry are as follows-

- a) The Wai Urban Co-Operative Bank Ltd, Wai Branch Satara.
- b) The Sangli District Central Co-Operative Bank Branch Palus, Dist-Sangli.
- c) Bank of India Satara Branch. These are Bankers of the Thorat industry.

G) List of Suppliers in a Thorat Industry:

There are various suppliers of Thorat industry in Maharashtra. This society was supplying their products in Pune, Satara, Mumbai, Kolhapur, Karad, Sangli and Palus etc. cities. The Thorat industry has various suppliers which are as follows-

- a) S.S Engineers, Pune.
- b) Walchandnagar industries Satara.
- c) NHEC, Pune.
- d) Lntervolve, Pune.

- e) AFX+Q Engineers, Mumbai.
- f) Mody Pump, Mumbai.
- g) Thorat Valves Pvt Ltd Stara.
- h) Precimax Brgs Pvt Ltd Kolhapur.
- i) Kagar Brgs Pvt Ltd Kolhapur.
- j) Unitools industries, Mumbai.
- k)Datta Tools, Karad.
- l) Ogale Yatrunk Vdyog.
- m) Unique Hydrotech Pvt Ltd Palus.
- n) Kavistu Transmissions Pvt Ltd Satara.
- o) Chinchrade Associates, Sangli.

Thorat industry has supplying their products by railway in the various cities.

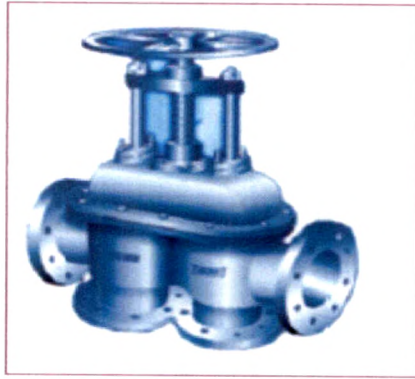
H) Products of Thorat Industry:



Fabricated Right Angle Valve



Butterfly Valve



Double Beat Valve



Globe Valve



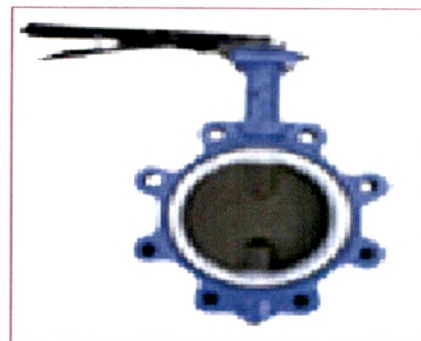
Non Return Valve



Pulp & Knife Gate Valve



Pan Discharge Valve



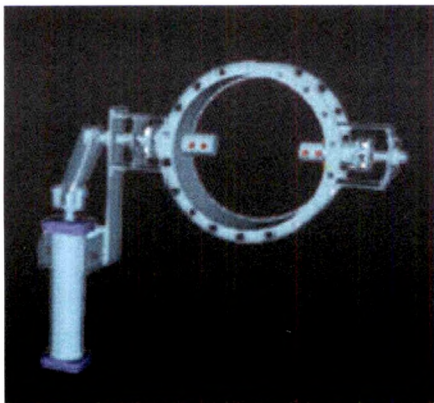
Butterfly valves



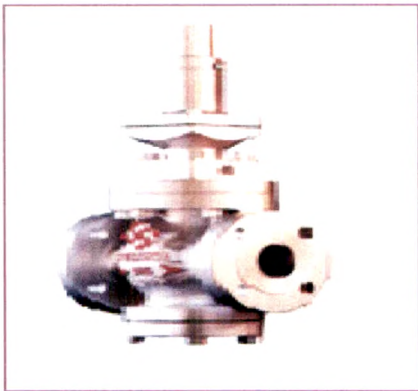
Gate Valve



Fabricated Straight Valve



Double Eccentric Butterfly Valve



T- Smart Butterfly Valve

3.4 PROFILE OF THE YASH INDUSTRY:

Yash industry Palus is located in Palus which is a rapidly developing industrial town which is 30 km from Sangli district in Maharashtra state. Yash industry is manufacturing number of pump and valve components, turbine shafts, marine shafts, Yash industry having machine set up like VTI machines, HBM machines, drilling machine with good skilled operators. Yash industry was established in the year 21 August 2004. Mr. Nilesh V. Yesugade is the founder member of the Yash industry. Yash industry equipped with latest machineries to serve up which provides complete machining solution to the clients. The industry also providing the product supply to the industrial sector. So that the industrial sector was also growing speedily in the area of the Palus.

A) Establishment of Yash Industry:

Yash industry. Palus is established as on 21 August 2004. It is situated in 1984/B, Dattnagar, Palus, 416310 dist- Sangli (Maharashtra). This industry is registered under the registration no (SSI): 270351100112. The operational area of Yash industry is the entire Maharashtra state in India.

General Information

Name of the Industry	Yash Industry Palus.
Plant Location	1984/B. Dattnagar, Palus Tel- Palus, Dist- Sangli 416310, Cont No- 02346-226011
Date of Establishment	21 August 2004
Office Address	Plot no-116,117,1984,1988 P.K Industrial

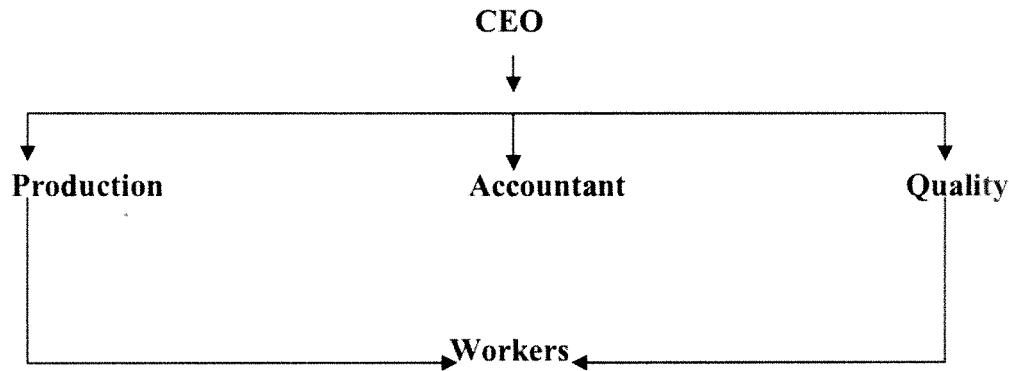
16828

	area, Palus.(4163010)
Total Staff	46
Registration (SSI)	270351100112
Email ID	Yashengineerspalus@Rediffmail.com OR Yash8892@gmail.com
VAT TIN No	27390670731V
CST TIN NO	27390670731C
Excise Reg No	AACPV6776DXM001
PAN CARD No	AACPY6776D
Awards	ISO 9001/2008
Weekly off	Tuesday

(Source: Profile of the Yash Industry, Palus)

B) Organizational Structure of Yash Industry :

The Yash industry has a well organization structure. Yash industries total operational authority is given to the CEO (Nilesh V. Yesugade) production department, accountant, quality department is the main department which handles the whole department workers, storekeepers and other workers of the society. The organization chart of Yash industry is as follows.



C) Performance of The Industry:

a) Turnover of the Yash Industry:

The turnover position of the Yash industry shown in the following table during 2008-09 to 2012-13

Table no 3.4
Turnover of the Yash Industry

Year	Turnover	Increase/Decrease
2008-09	35,40,000	Increase
2009-10	52,35,880	Increase
2010-11	1,04,87,573	Increase
2011-12	1,40,81,577	Increase
2012-13	2,79,43,205	Increase

(Sources: Annual Report of Yash Industry from Year 2008-09 to 2012-13)

The above table shows that turnover of the Yash industry is continuously growing over a period of 5 years from 2008-09 to 2012-13. In the year 2008-09 it was 35,40,000, in the year 2009-10 it was increased and become 52,35,880. But in the year 2010-11 it was reached to 1,04,87,573. In the year 2011-12 it was reached to 1,40,81,577. In the next year 2012-13 it was reached to 2,79,43,205.

b) Inventory of the Yash Industry:

The inventory position of the Yash industry shown in the following table during 2008-09 to 2012-13.

Table No 3.5
Inventory of the Yash Industry

Year	Inventory	Increase/Decrease
2008-09	2,42,090	Increase
2009-10	2,79,480	Increase
2010-11	33,37,480	Increase
2011-12	75,25,345	Increase
2012-13	53,00,498	Increase

(Sources: Annual Report of Yash Industry from year 2008-09 to 2012-13)

The above table shows that inventory of the Yash Industry from 2008-096 to 2012-13. In the year 2008-09 it was 2,42,090. In the year 2009-10 it was increased to 2,79,480. But in the year 2010-11 it was and become 33,37,480. In the year 2011-12 it was increased to 75,25,345. In the next year 2012-13 it was reduced become 53,00,498.

c) Profit of the Yash Industry:

Table No 3.6
Profit of the Yash Industry

Year	Profit	Increase/Decrease
2008-09	55,040	Increase
2009-10	2,49,869	Increase
2010-11	-30,483	Decrease (loss)
2011-12	2,45,468	Increase
2012-13	11,50,264	Increase

(Sources: Annual Report of Yash Industry from year 2008-09 to 2012-13)

The above table shows that profit of the Yash Industry from 2008-09 to 2012-13. In the year 2008-09 it was 55,040. In the year 2009-10 it was increased become 2,49,869. But In the year 2010-11, it was reduced (net loss) -30,483. In the year 2011-12 it was increased in 2,45,468. & 2012-13 it was reached to 11,50,264.

D) Service to the Customer:

Yash industry Palus has providing various services to the customers.

- 1) The quality to every customers means conformance to requirements by way of product, performance, cost, delivery & services.
- 2) Yash Industry are committed to meet or exceed these requirements to give our customer consistence satisfaction.
- 3) With the latest machineries to serve the quality product to customers.

E) Other Activates:

- 1) The Yash industry provides safety facilities to the workers. i.e. dress, helmet, Glufs, shoes, Goggle etc.
- 2) The industry provides money help for medical treatment for poor and needy workers in the industry.

F) Bankers of The Yash Industry:

Bankers of the Yash industry are as follows .

- a) The Palus Sahakari Bank Ltd Palus.
- b) The Sangli District Central Co-operative Bank, branch Palus. These bankers in a Yash industries. The transportation of the manufacturing production in a delivered product Railway- Kirloskarwadi railway station (central railway) and road – T.C.T/G.P.I/S.E.R.

G) List of Suppliers in a Yash Industry:

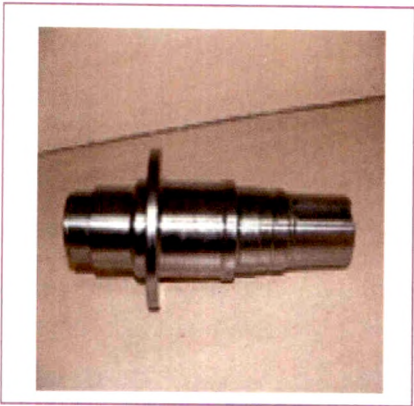
The Yash industry has various suppliers. The main focus of the society in the supply of product in the Vadodara, Kirloskarwadi, Kondapuri, Ahamadnagar, Aurangabad etc. the Yash industry has various suppliers these are as follows-

- a) Jyoti Ltd. Vadodara.
- b) Kirloskar Brothers Ltd. Kirloskarwadi.
- c) Kirloskar Brothers Ltd Kondapuri (Valve Business unit)
- d) Kirloskar Ebara Pumps Ltd Kirloskarwadi.
- e) Kirloskar corrocoat Ltd Kirloskarwadi.
- f) Mather & Platt, Pune.
- g) Crompton grooves Ltd. Ahamadnagar.
- h) Fouress Valves Paithan Aurangabad.

H) Products of Yash Industry:



48 Inch Gate Valve Machining

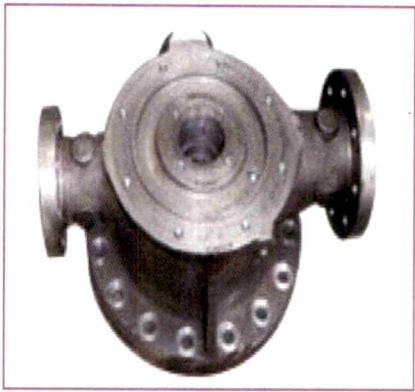


Steel Rod

1600 mm Valve Body



Fabricated Pump Component



Discharge Head



Pump Casing



Valve Pin i.e. Hinge Pin ,Tie Rod etc



**Valve Spindles / Shafts
Up to 300mm Dia & 3500mmL**

Precision Machining & Drilling Components of Company:-



Valve Pin i.e. Hinge Pin ,Tie Rod etc.



**Valve Spindles / Shafts
Up to 300mm Dia & 3500mm**

3.5 CONCLUSION:

The researcher has been selected two industry a) Thorat industry and b) Yash industry Palus. Thorat industry has established before establishment of Yash industry Palus. The both industry concern different operation in manufacturing, coupling, Lmpeller adj.nut, pump shafts, shaft sleeve, Volvo Spindless/shafts, etc. all these things are create problems for industries. Thorat industry and Yash industry is one of the noted service provider & supplier in manufacturing products.

The Thorat industry has given focus on the supply there products in Satara, Pune, Mumbai, Kirloskarwadi, Kolhapur, Karad, Palus etc. Yash industry has supply's their products in Vadodara, Kirloskarwadi, Ahamadnagar, Pune, Aurangabad etc. These two industry has providing manufacturing products to the other industry. These two industry has playing vital role in the development of their operational areas.

SALE, PURCHASE, KNOWLEDGE, SERVICE
SARVODAYA UNIVERSITY, KOLHAPUR