

APPENDIX-3

A PICTORIAL VIEW OF ICDS APPENDIX-3.1

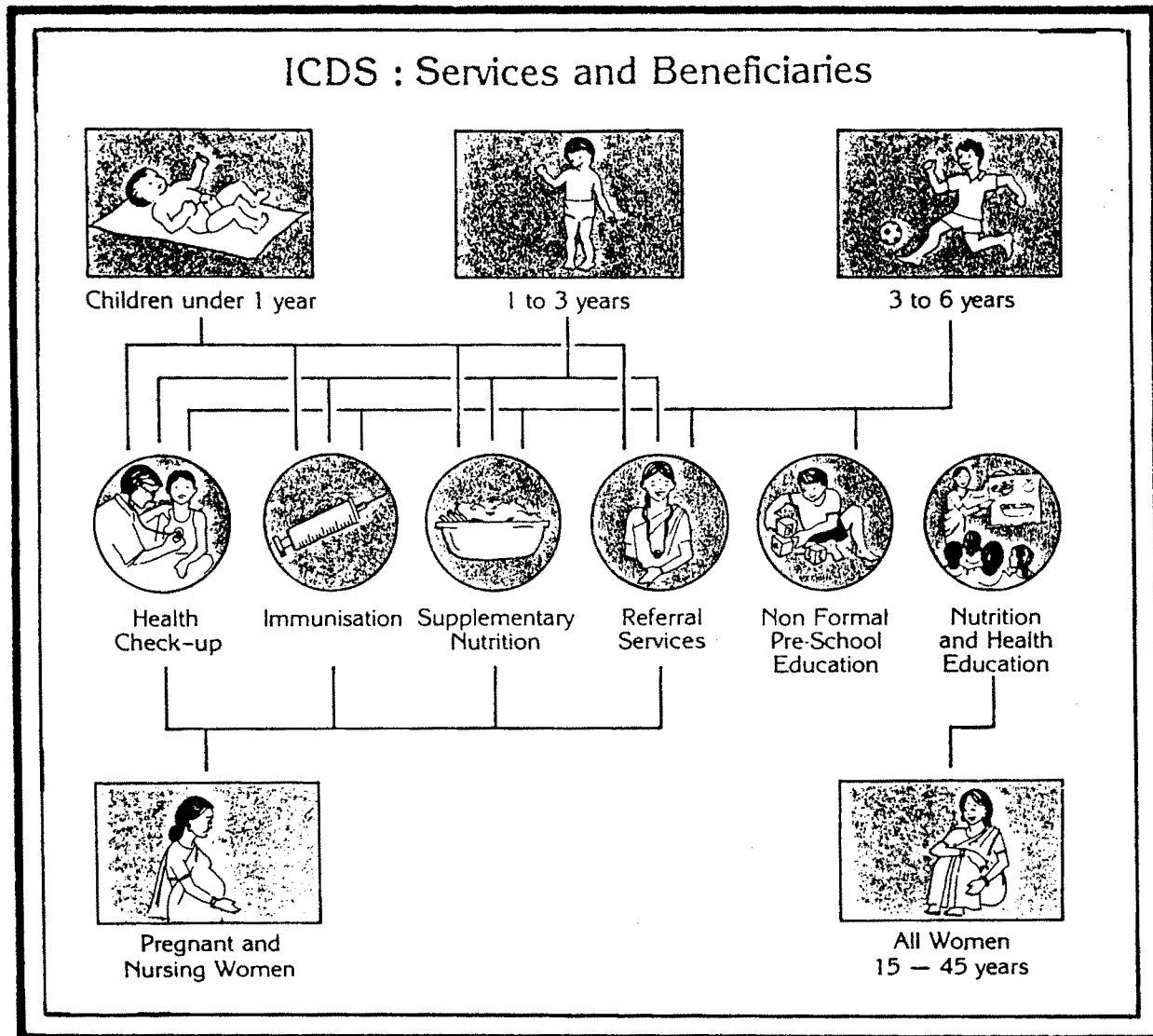




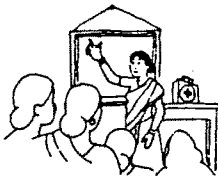



Fig. 2

APPENDIX-3.2

1.		Supplementary Nutrition
2		Health check-up
3		Primary Health care/Referral Services
4		Immunization
5		Nutrition and Health Education
6		Non-formal Pre-school Education

PACKAGE OF SERVICES UNDER ICDS PROGRAMME

Fig. 3

APPENDIX-3.3

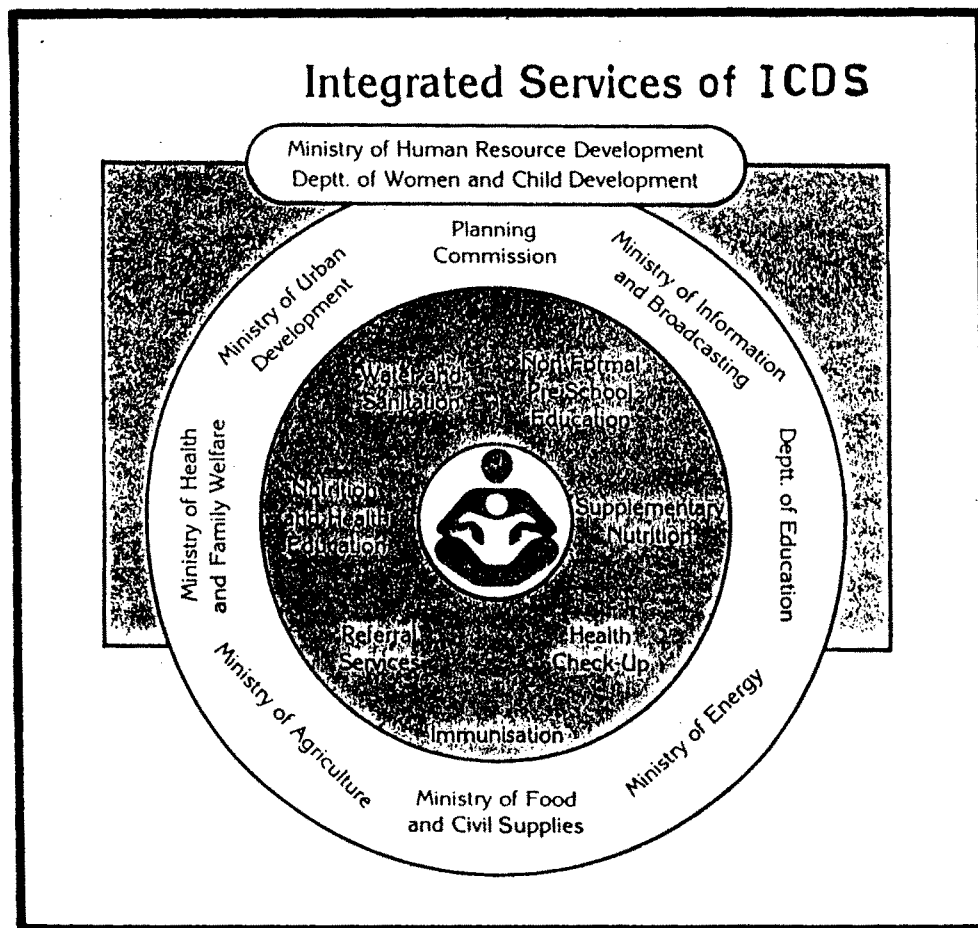


Fig. 4

APPENDIX-3.4
VILLAGE LEVEL SUPPORTIVE SERVICES FOR ICDS

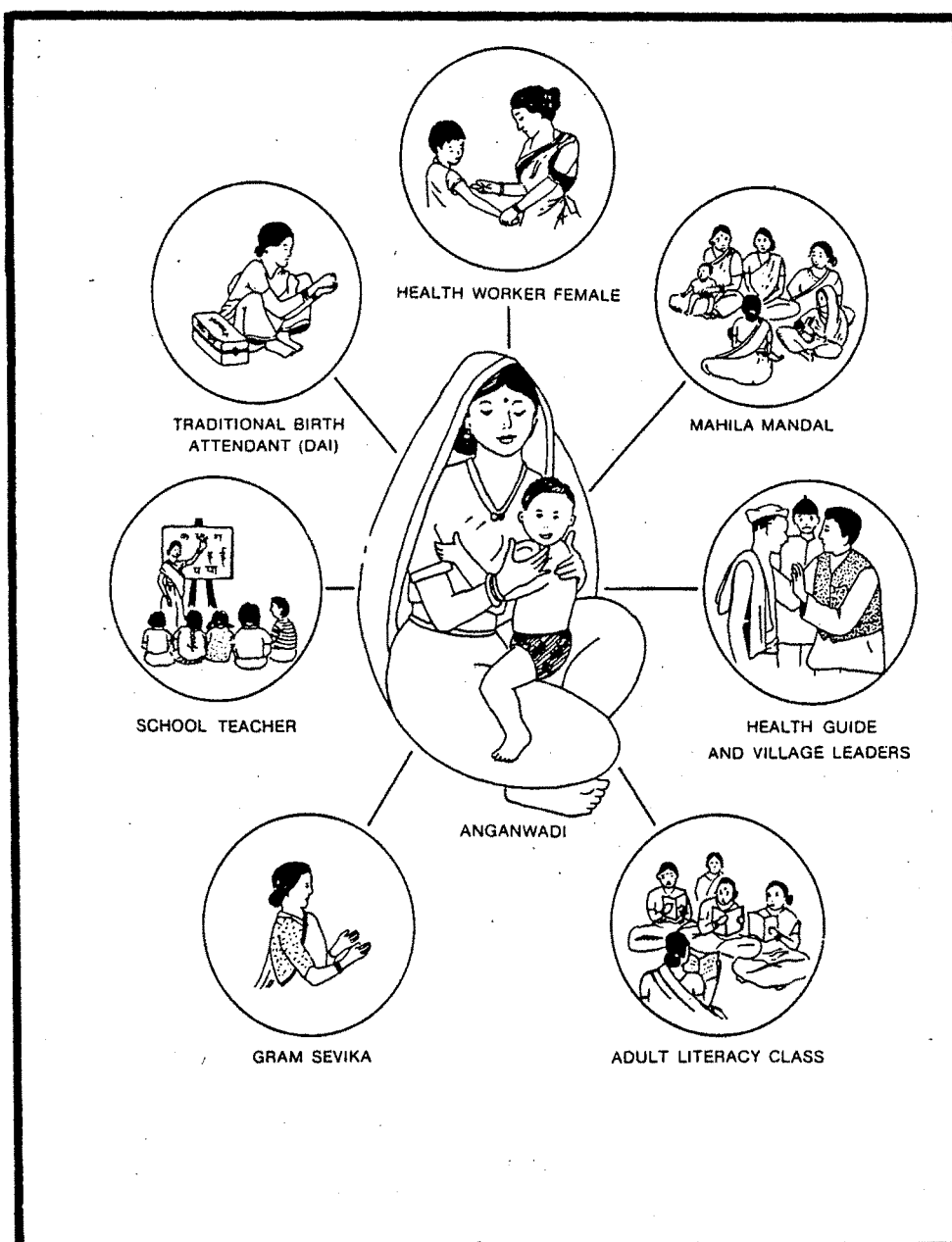


Fig.5

APPENDIX-3.5

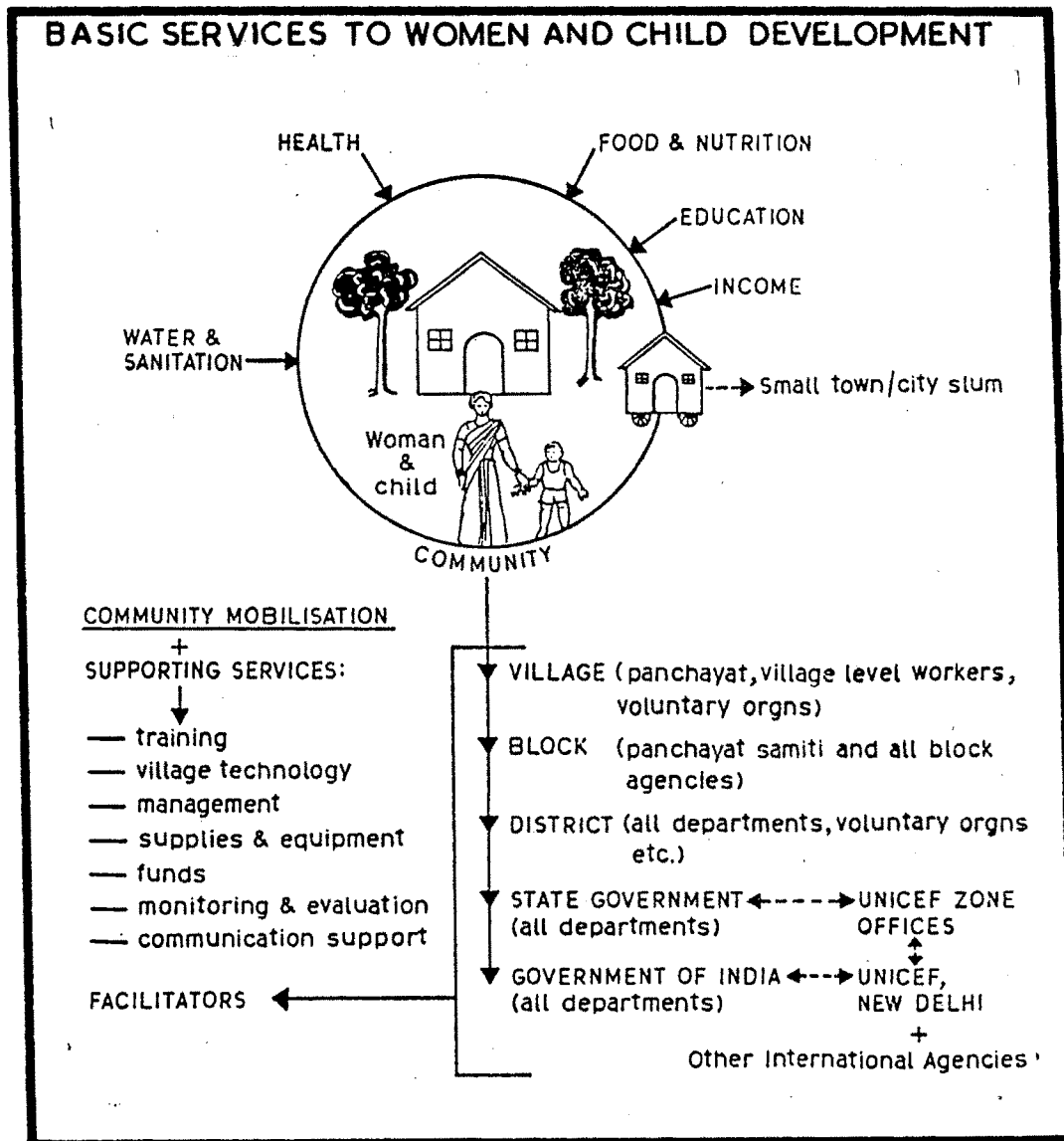


Fig.6

APPENDIX-3.6

ADMINISTRATIVE SET-UP AND ORGANISATIONAL CHARTS OF ICDS SCHEME

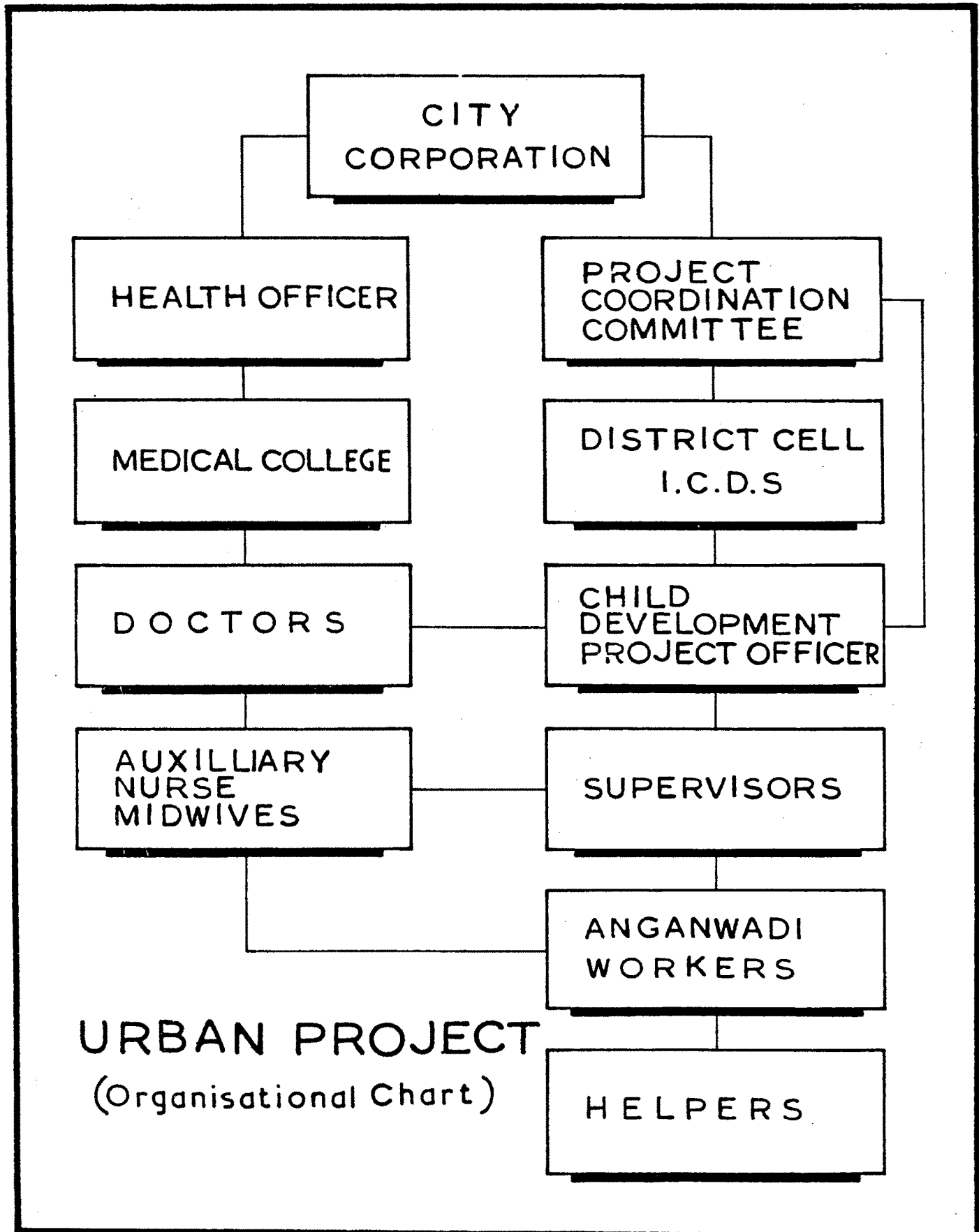


Fig. 7

APPENDIX-3.7

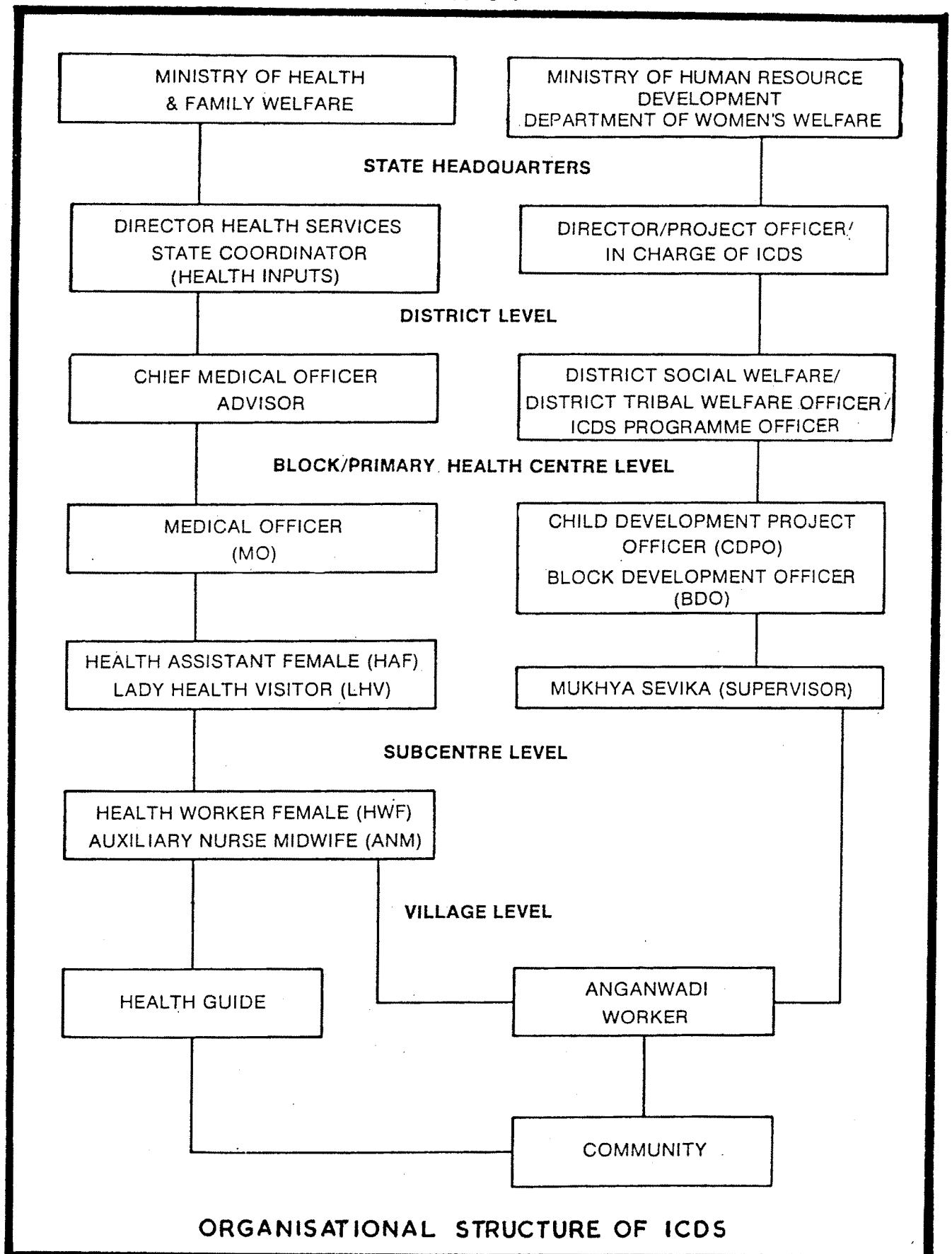


Fig. 8

APPENDIX-3-8

I C D S PROJECTS (ADMINISTRATIVE CHART)

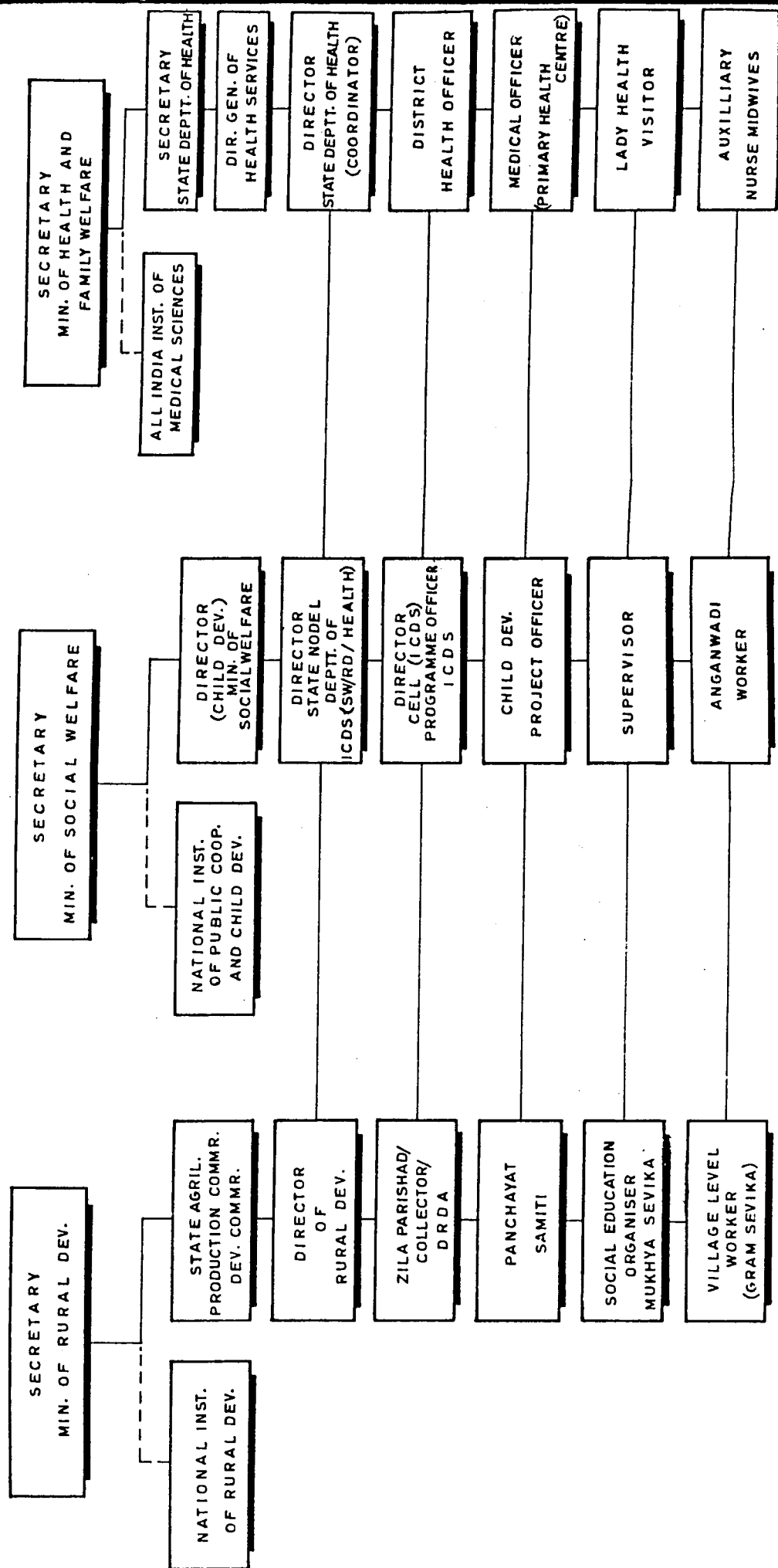


Fig. 9

The diagram illustrates the organizational structure of a District Panchayat. At the center is a portrait of a woman, likely the District Panchayat President. Surrounding this are concentric rings of text. The innermost ring lists various departments: Agriculture, Engineering, Social Education, Youth Club, Cooperative Societies, Medical Officer, and Health & Family Welfare. The next ring lists specific roles: District Agriculture Officer, District Engineer, District Social Education Officer, District Youth Club Secretary, District Cooperative Societies Secretary, District Medical Officer, and District Health & Family Welfare Officer. The outermost ring lists the names of the District Panchayat members, arranged in a circle around the central structure.

Fig. 10

APPENDIX-3.10 WEIGHT CHARTS OF CHILDREN BENEFICIARIES UNDER ICDS **WEIGHT CHART FROM BIRTH TO 5 YEARS OF AGE**

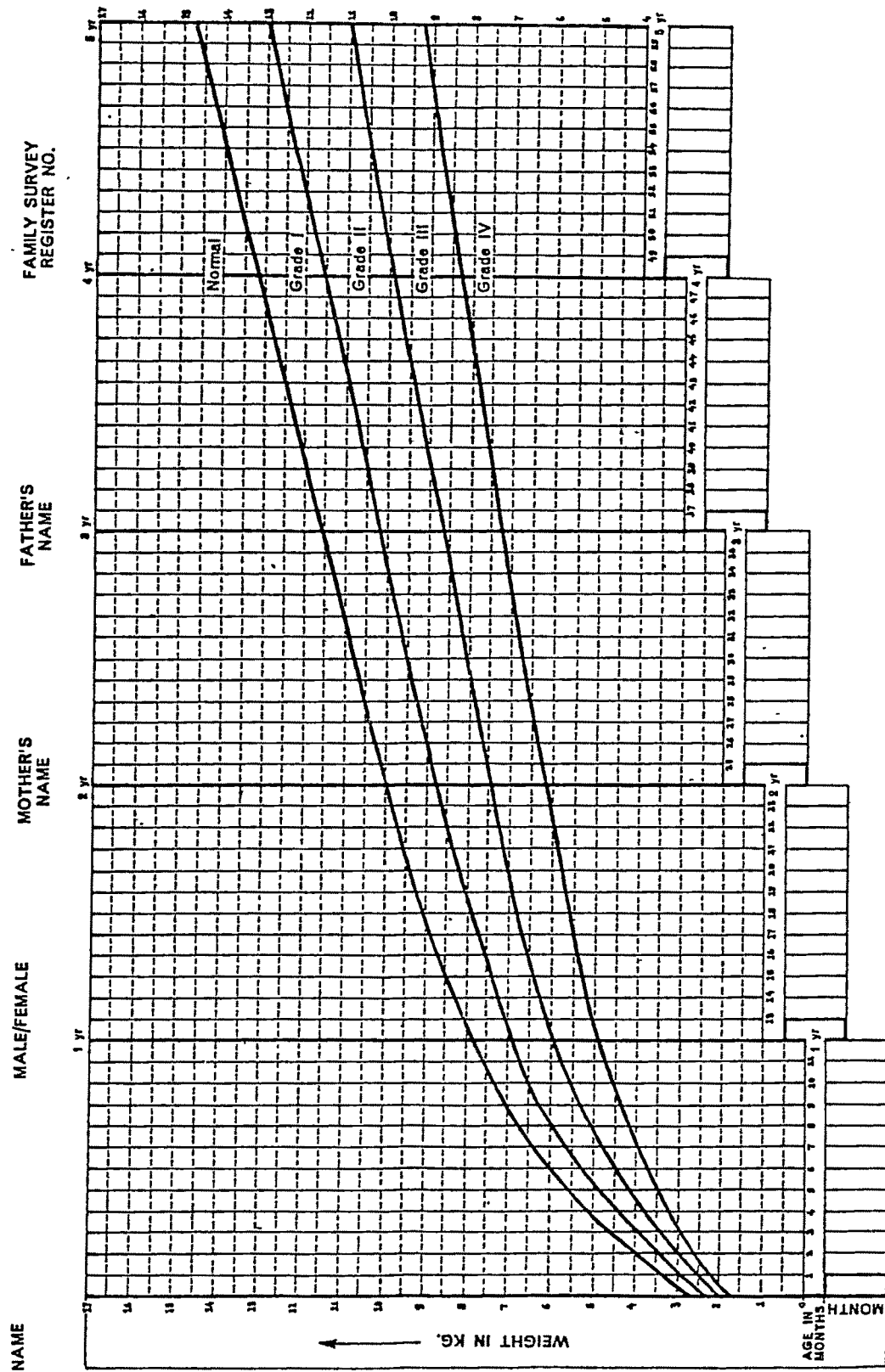
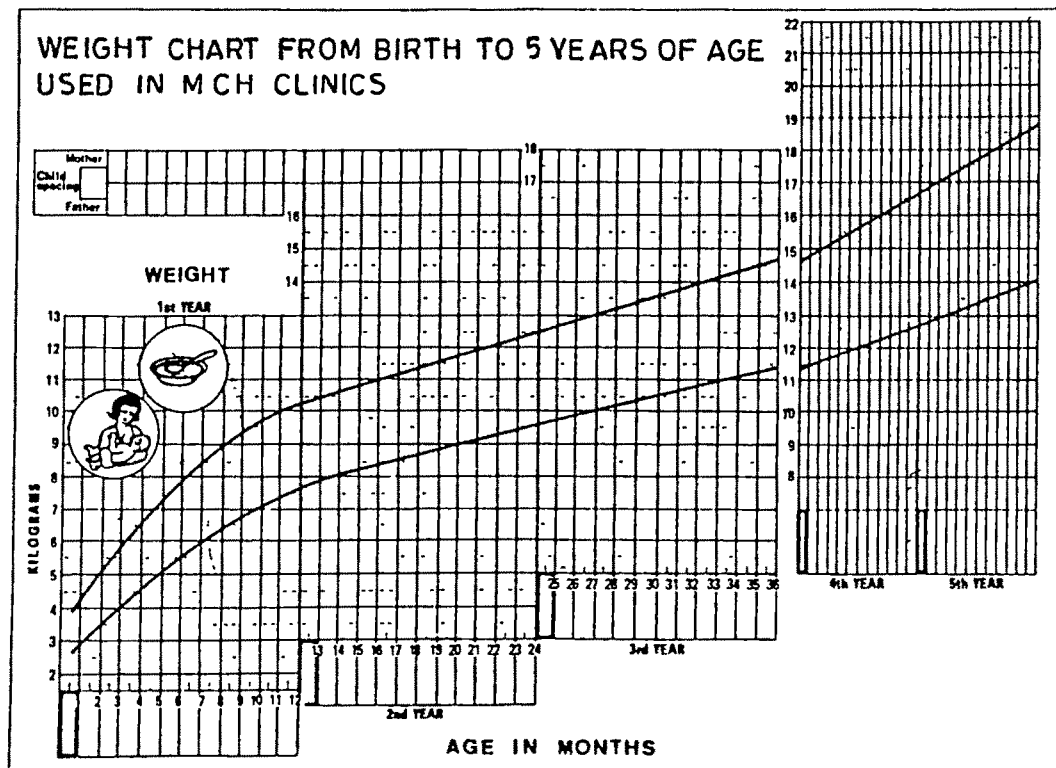


Fig. 11

APPENDIX-3.11

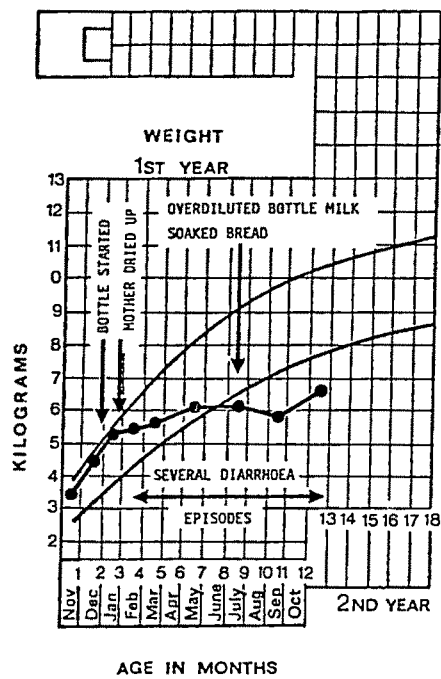


'Road to Health' chart for use in MCH clinics. The upper line corresponds approximately to the average weights of healthy children and the lower line to the lower limit of normal weights

Fig.12

APPENDIX-3.12

WEIGHT CHART OF AN INFANT - BEFORE BOTTLE FEEDING
AND AFTER BOTTLE FEEDING



Weight chart of an infant who was breast fed for three months during which time weight gain was normal. Over-diluted bottle feeds were started at two months and between 4-12 months there were several episodes of diarrhoea. Weight gain was poor and by nine months the infant was not on the Road to Health. The mother 'dried up' soon after the bottle feeds were started.

Fig.13

APPENDIX-3.13

ICDS cares

(I) SUPPLEMENTARY NUTRITION

(II) IMMUNIZATION

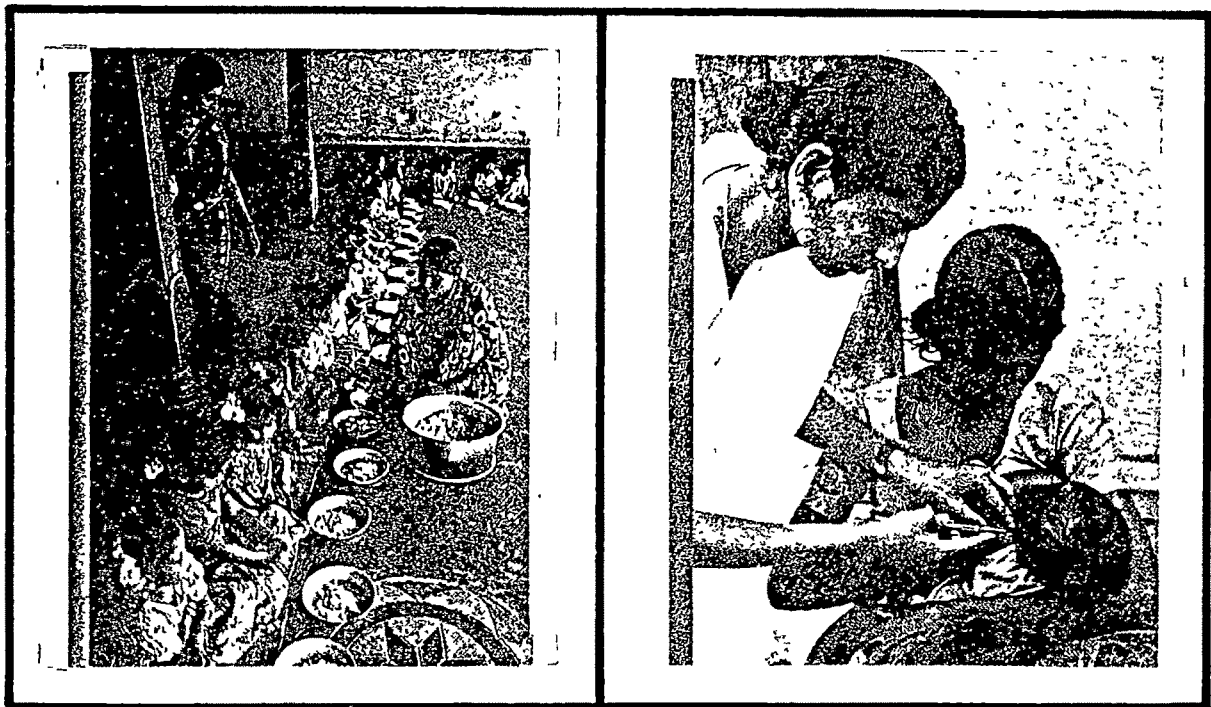


Fig.14

(III) HEALTH CHECK UP



(IV) REFERRAL SERVICES



(V) PRE-SCHOOL EDUCATION/NON FORMAL-
EDUCATION

(VI) NUTRITION AND HEALTH EDUCATION