

FIGURES.

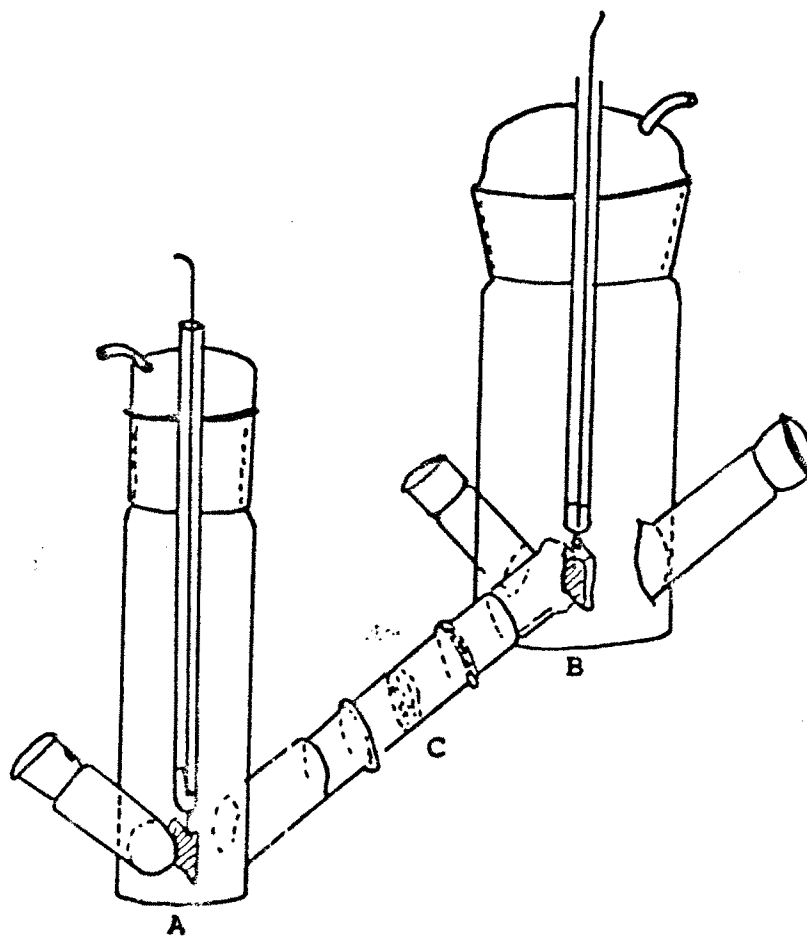
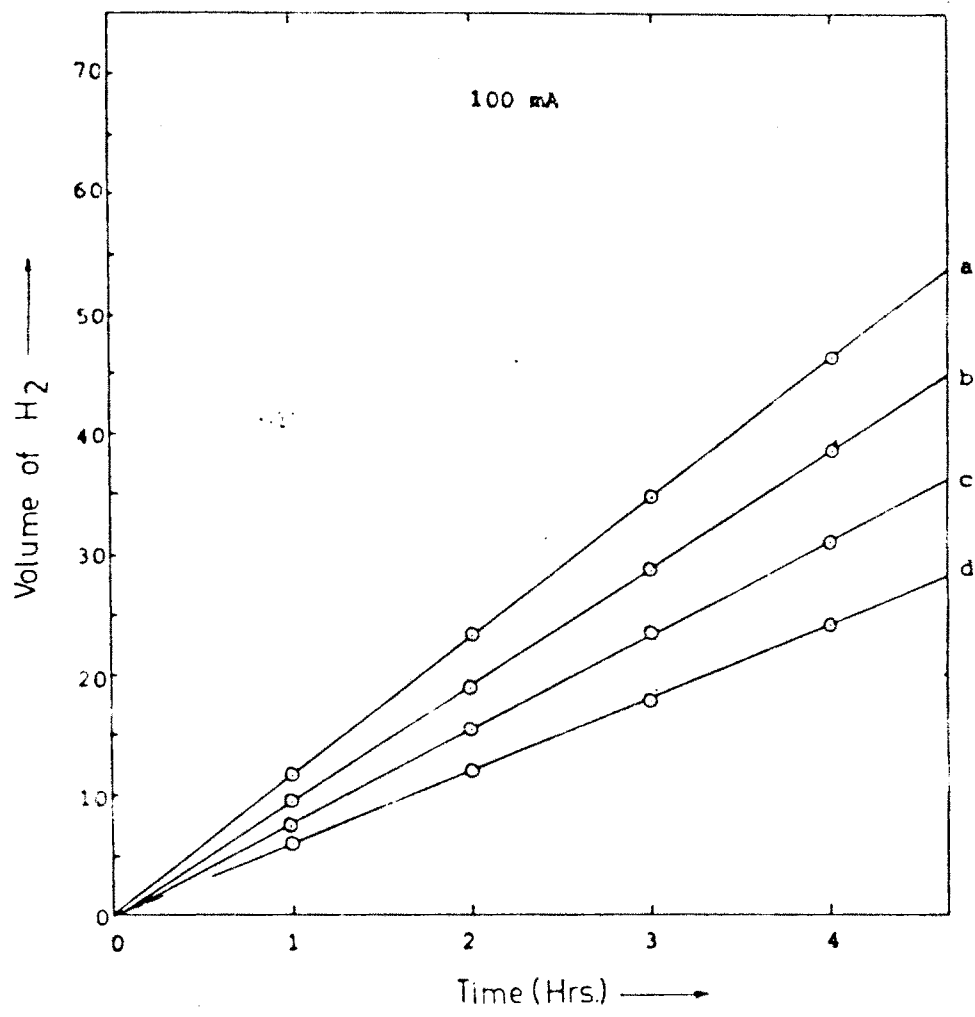


FIGURE 1 : ELECTROLYTIC CELL USED IN THE
POLYMERIZATION STUDIES.



[DMD] = (a) = 0.0. M (b) = 0.42. M (c) = 0.63 M
 (d) = 0.84 M

FIG. 2 : HYDROGEN EVOLUTION AT THE CATHODE.

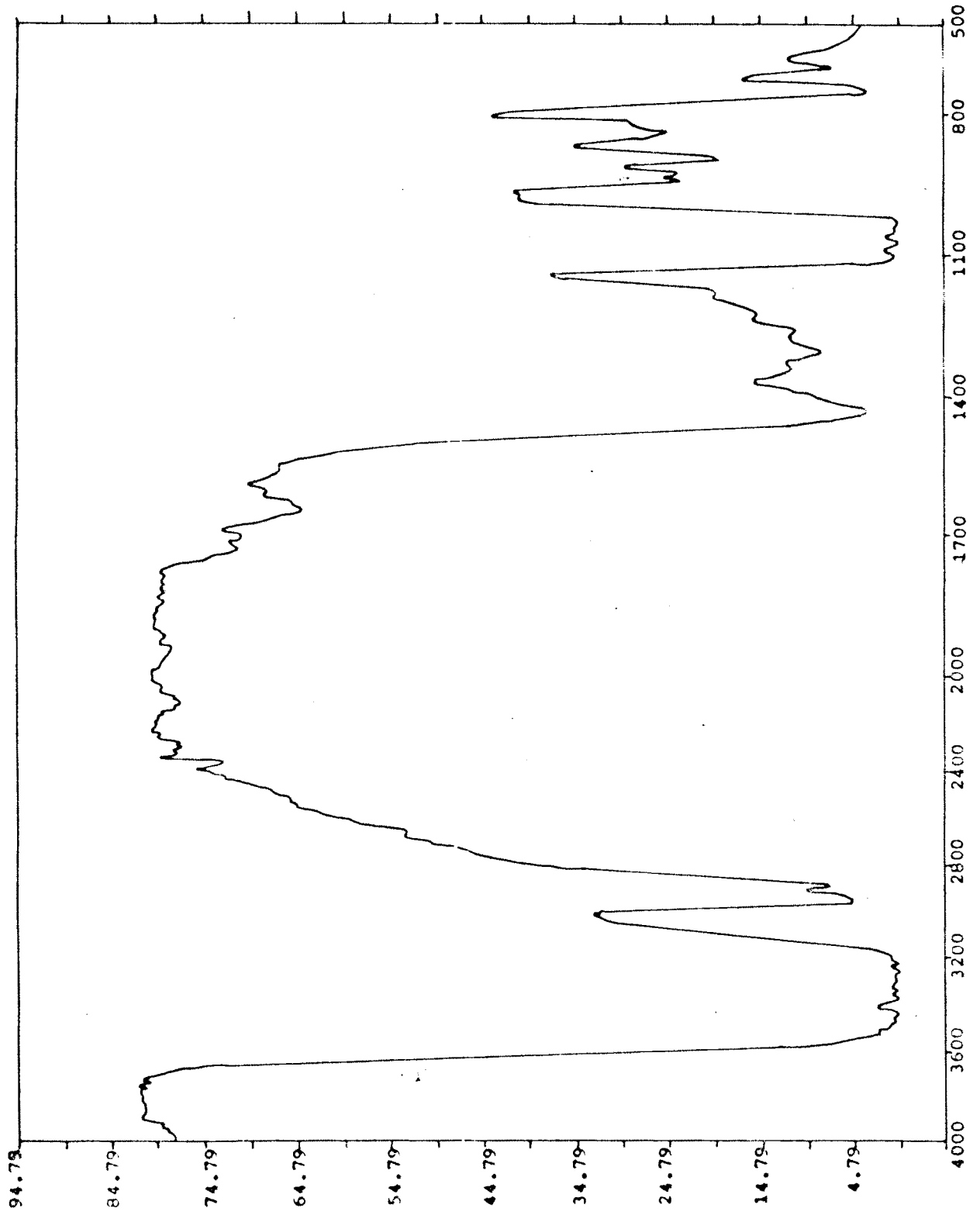


FIG. 3 : I.R. SPECTRUM OF 3 CHLORO, 1,2 PROPANE DIOL.

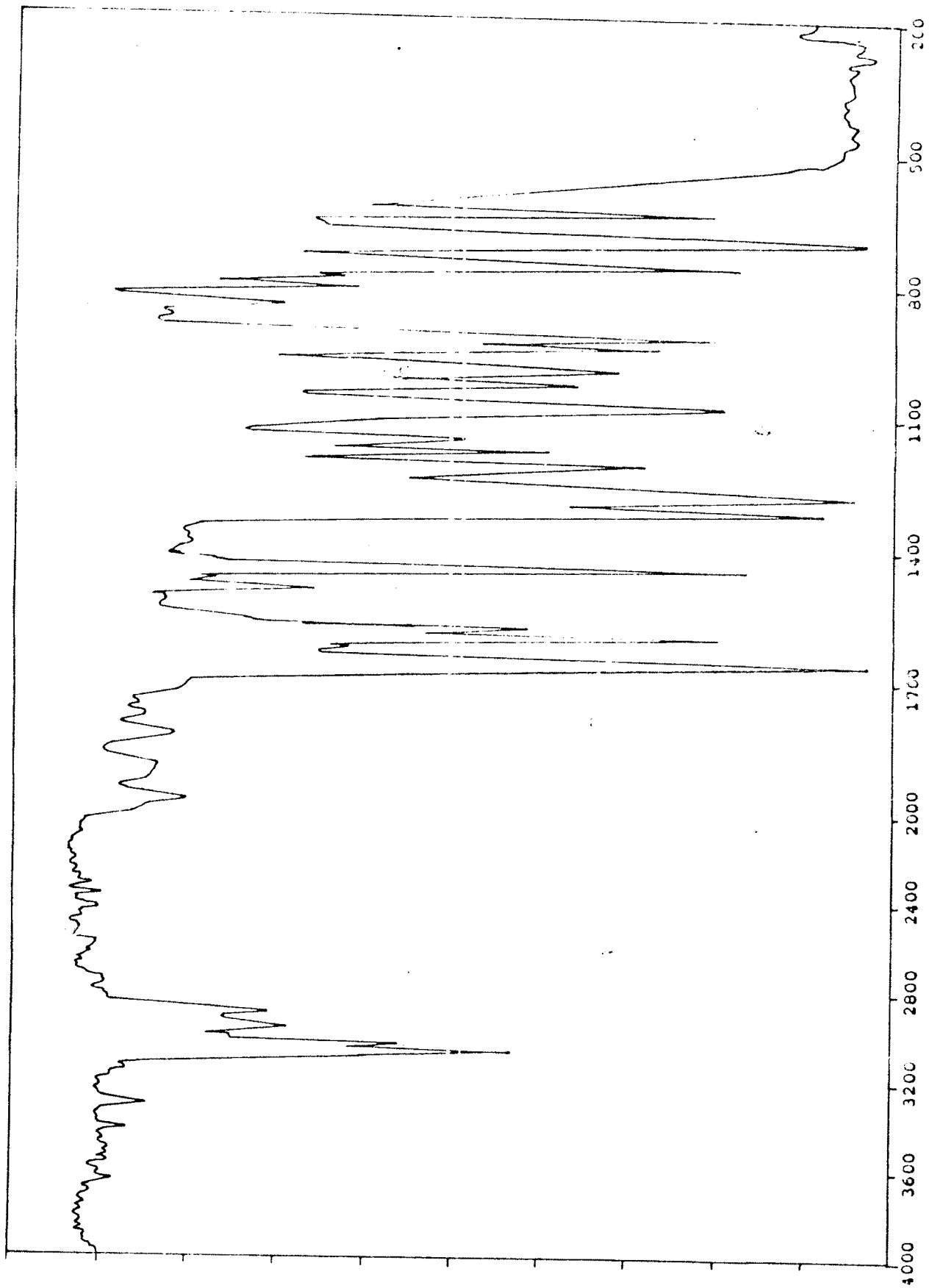


FIG.4 : I.R. SPECTRUM OF DMD.

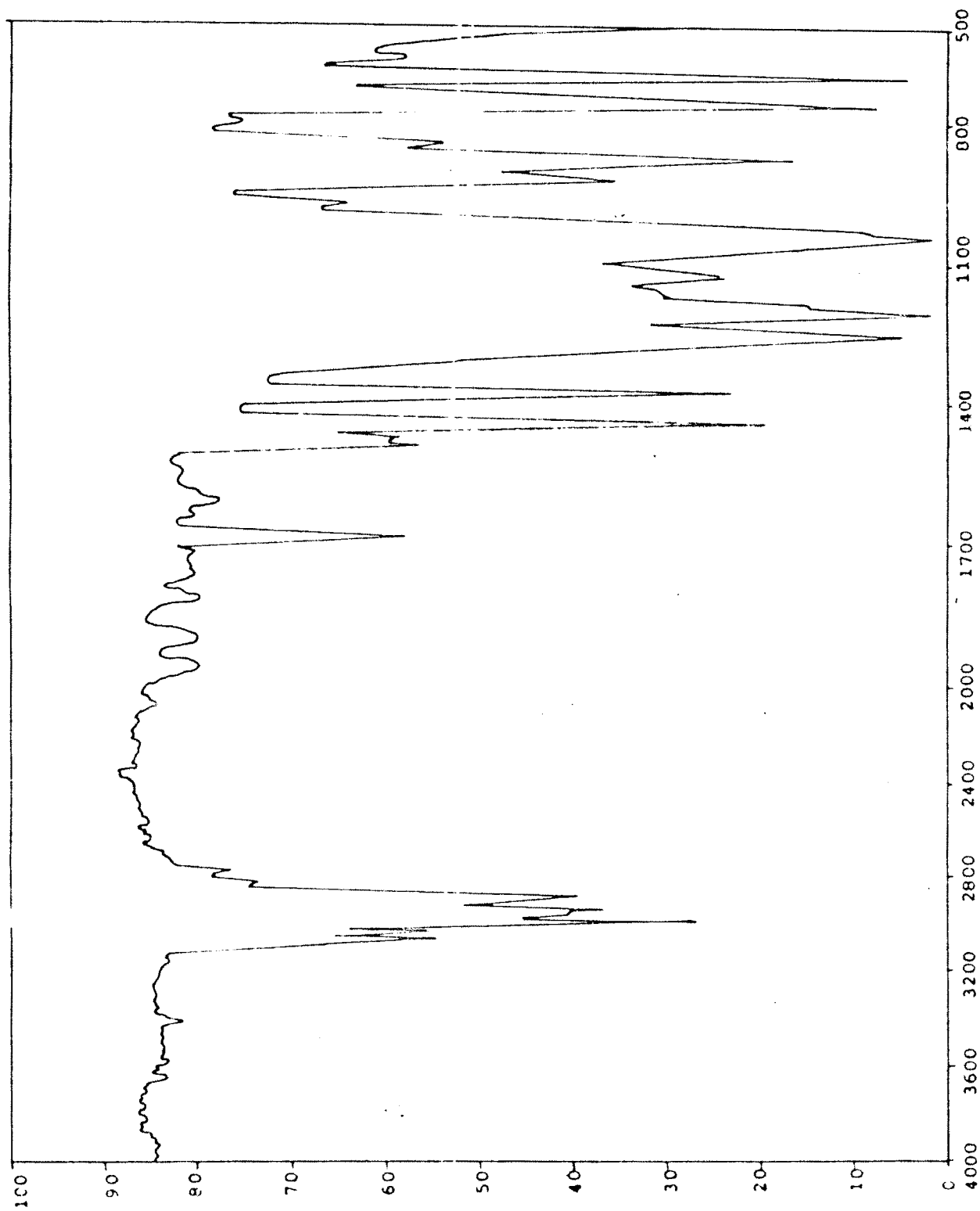


FIG.5 : I.R. SPECTRUM OF MPMD (CHLORO COMP.).

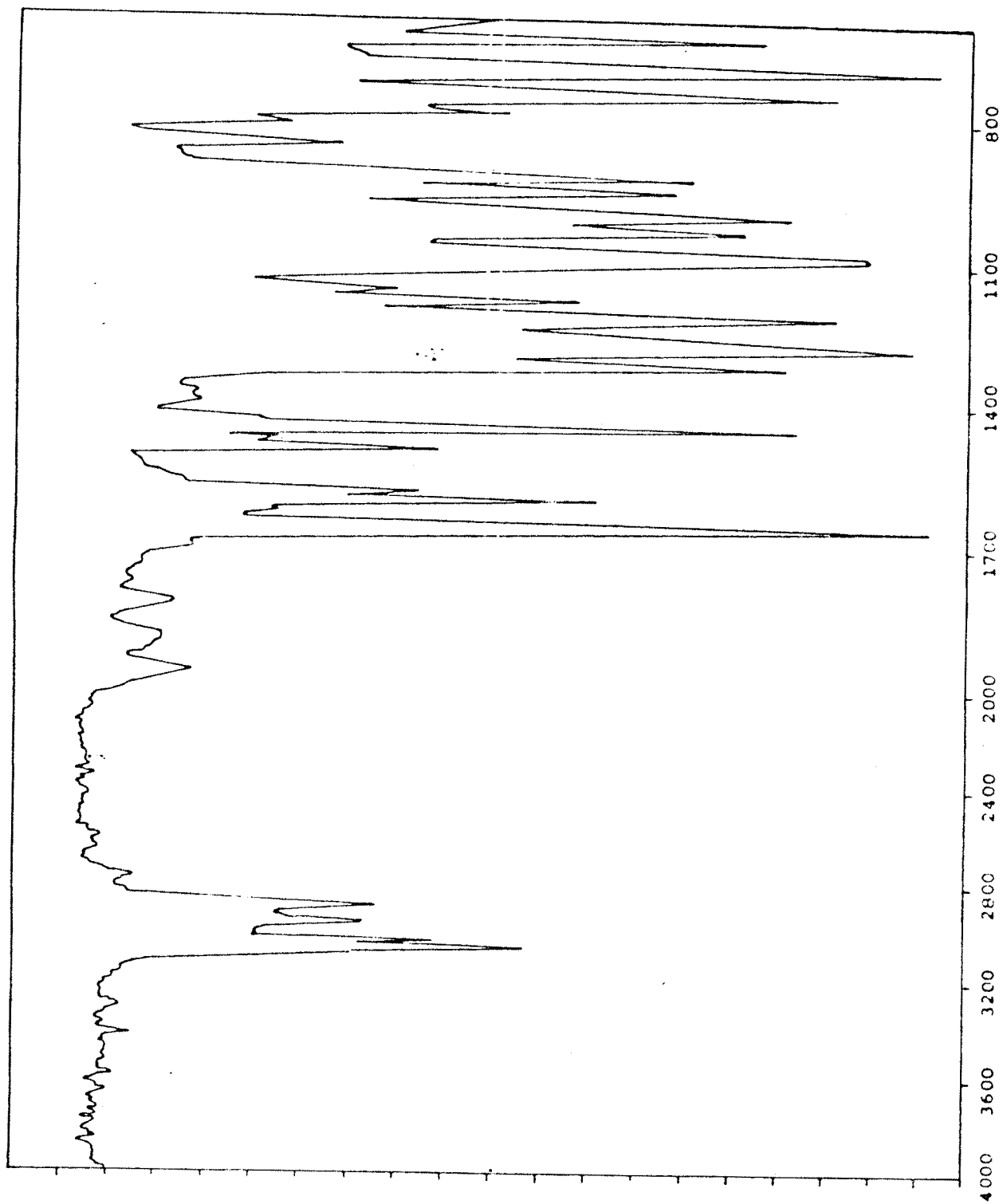


FIG. 6 : I.R. SPECTRUM OF MPMD.

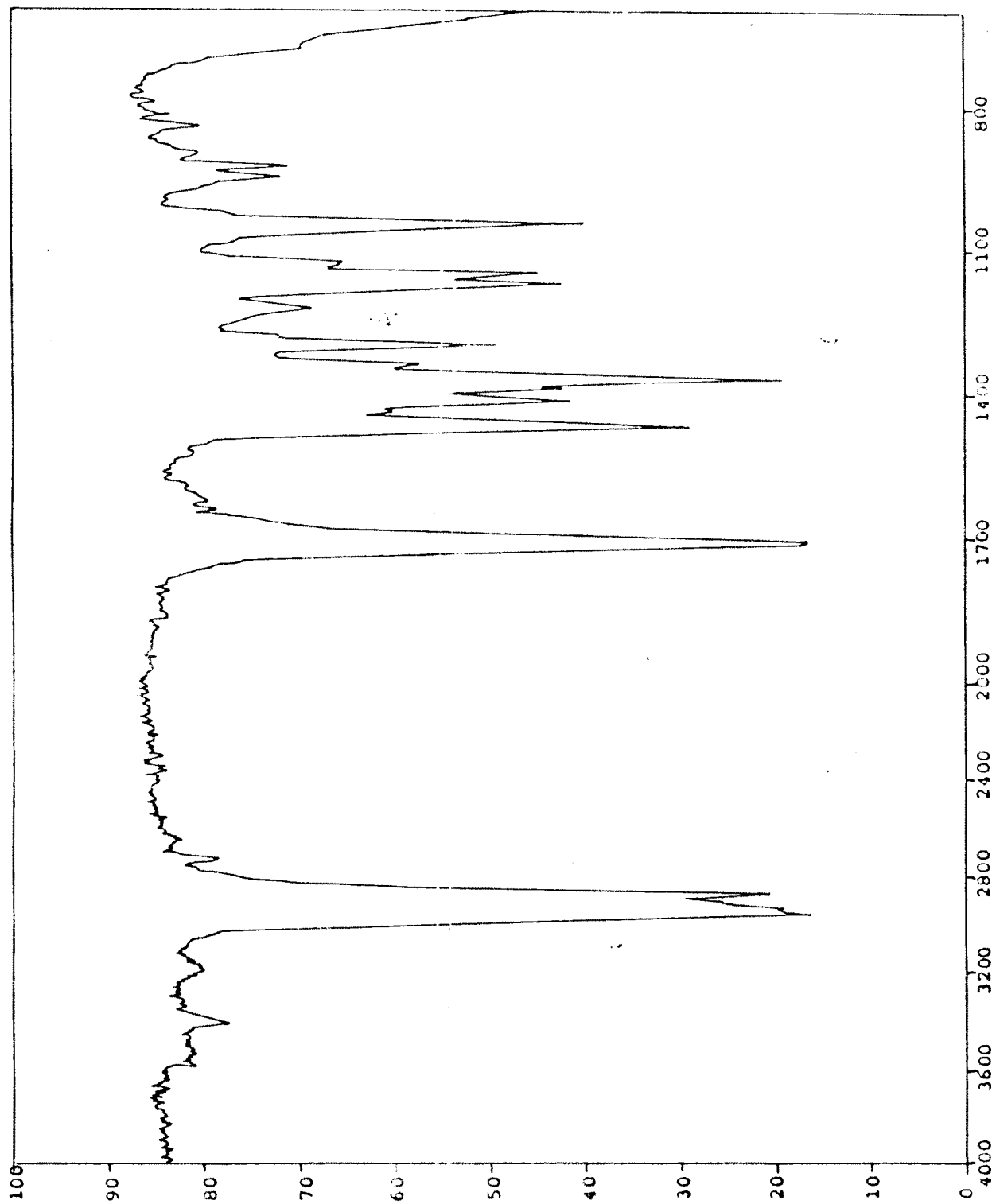


FIG. 7 : I.R. SPECTRUM OF PDMD