

## L I S T O F G R A P H S

1. Graph showing Growth of Share Capital
2. Graph showing Reserve funds
3. Graph showing Grant and Donations
4. Graph showing Deposits
5. Graph showing Investment's
6. Graph showing Fixed Asset
7. Graph showing Current Asset.
8. Graph showing Net Profit
9. Graph showing number of staff
10. Graph showing number of members

**TABLE NO. 3.1**  
**Information about Hospital's Work in 25 Years**  
**Barshi Maternity and General Co-operative Hospital**

Year	Out-door Patient	In-door	Operation	Family Planning	Dilavarles
1968-69	3422	1056	318	72	251
1969-70	4184	1348	475	197	245
1970-71	4258	1359	479	226	234
1971-72	5274	1431	593	242	222
1972-73	6475	1696	455	213	252
1973-74	9637	2106	600	240	246
1974-75	7812	2410	519	342	285
1975-76	9305	2597	465	418	199
1976-77	9905	2897	425	335	203
1977-78	11101	3306	640	251	239
1978-79	15285	4041	836	336	311
1979-80	14027	3855	941	269	345
1980-81	13951	4428	1092	362	384
1981-82	13663	4460	1224	423	443
1982-83	15113	5044	1438	415	489
1983-84	14827	5281	1491	400	523
1984-85	14999	5756	1763	336	581
1985-86	16176	5663	1745	391	637
1986-87	15599	5357	1570	389	657
1987-88	15318	5447	1898	361	692
1988-89	14400	5612	1700	383	715
1989-90	16242	5787	1808	301	681
1990-91	17817	6690	1838	365	735
1991-92	14900	5527	1611	292	565
1992-93	16936	6377	2034	373	683

(9 months because of year ended on March,

Source : Records available in hospital

Table No. 3.1

Information about Outdoor and Indoor patients and operation and family planning.

Information of outdoor and Indoor patients and operation, family planning is shown in table No. 3.1

The figures are taken from the year 1968-69 to 1992-93 (15 years)

The table shows that the number of Indoor as well as outdoor patients is increasing year to year.

As well as the number of operations is also increasing. This is due to the reputation of the Doctors and Hospital staff also.

TABLE NO. 3.2

Particular's	Year 30/06/1990	Year 30/06/1990	Year 30/06/1990	Year 30/06/1990	Year 30/06/1990
1) Share Capital	10,00,000	10,00,000	10,00,000	10,00,000	10,00,000
1) Paid up share capital					
Own	1,55,340	1,55,340	1,55,340	1,55,940	1,55,000
Govtment	1,51,410	1,51,410	1,51,410	1,51,410	1,51,410
2) Reserve Funds	9,23,790	9,30,734	9,46,092	10,32,162	12,22,389
3) Grant and Donation	2,60,000	2,98,221	5,80,971	5,97,975	10,38,973
4) Deposits	20,650	20,650	20,450	20,750	20,750
5) Investment's	2,97,851	48,368	2,52,922	57,670	3,97,067
6) Fixed Asset	9,80,167	11,91,875	13,24,919	19,68,772	21,21,201
7) Current Asset	1,21,922	1,13,906	1,26,699	2,09,714	1,92,181

Source : Annual Reports published by hospital.

Table No. 3.2

This table shows that information about financial position of Barshi, Maternity and General Co-operative Hospital. i. e. share capital, Reserve funds, Grant and donations, Deposits, Investments, Fixed Asset, Current Assets.

This information is given for five years from 1990 to 1994.

In the year 1990 to 1994 share capital is stable Rs. 10,00,000.

In the year 1990 Reserve funds are 9,23,790 and in the year 1994 the funds are increased by Rs. 12,22,389. It means the hospital was in good progress.

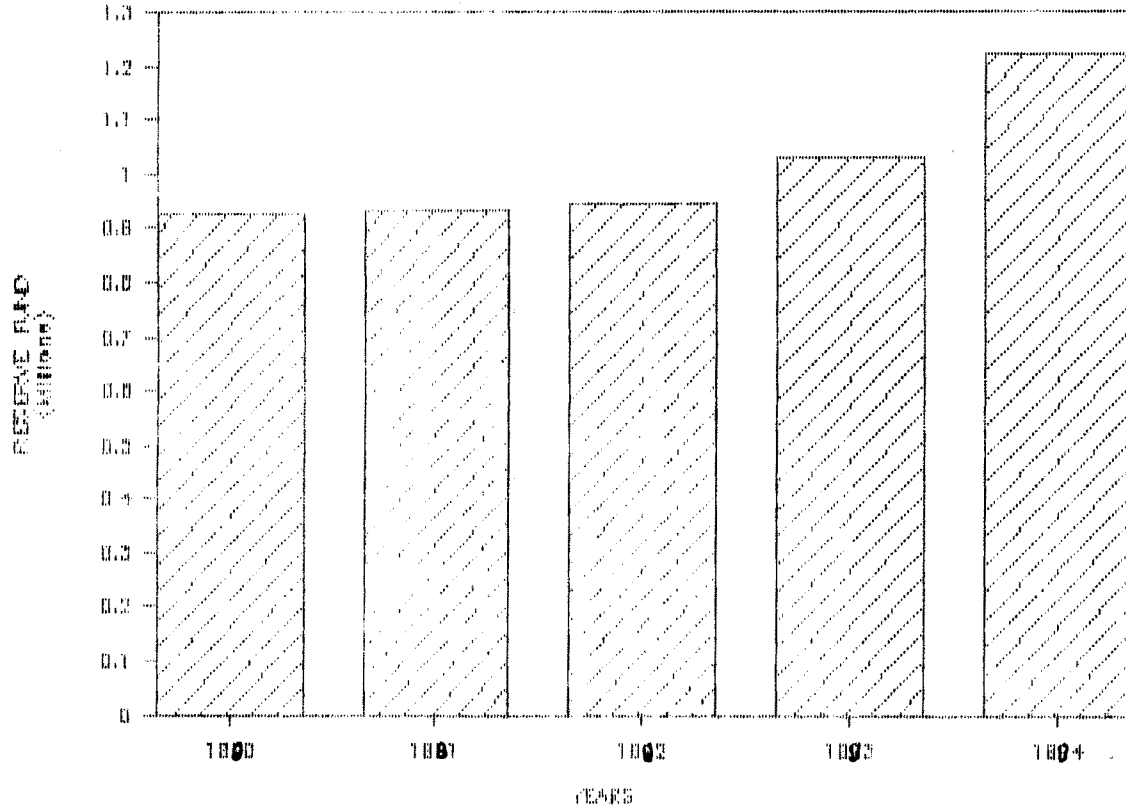
In the year 1990 grant and donations are 2,60,000 which is increased up to 10,38,973 in the year 1994.

In the year 1990 deposits are fixed up to 1994 there was no change in amount.

In the year 1990 Investments are 2,97,851 which is increased up to 3,97,057 in the year 1994. It shows good signs of the development. In the year 1990 to 1994 fixed Assets also increased but Current Assets decreased year by year. It means there was comparatively good financial position of hospital.

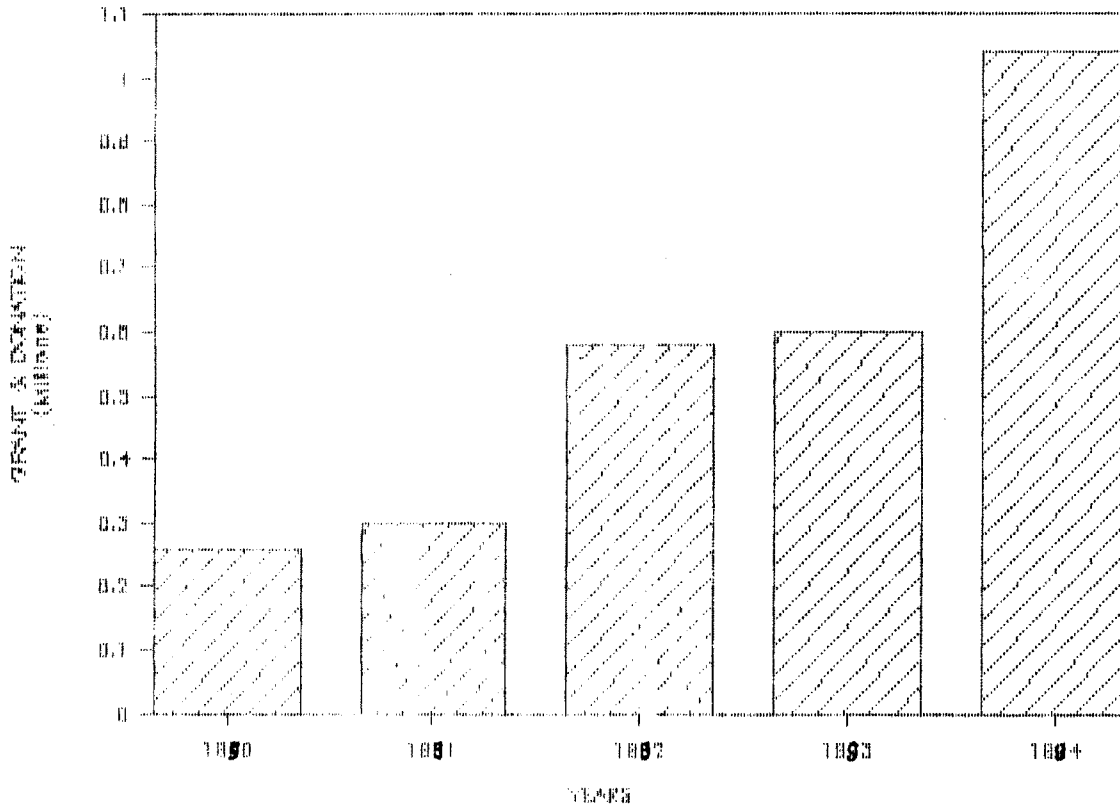
2 GRAPH SHOWING 5 YEARS RESERVE FUND

BASED MATERNITY & GEN. CO-OP HOSPITAL



3

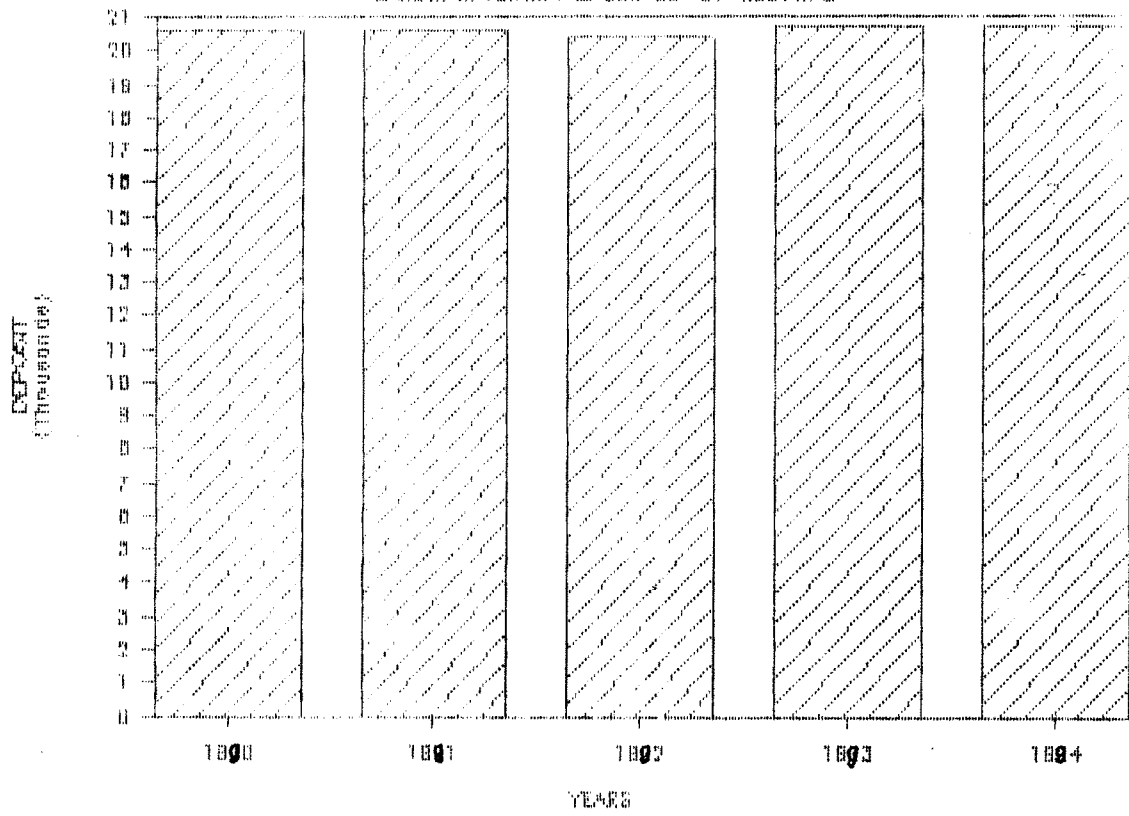
GRAPH SHOWING 5 YEARS GRANT & DONATION  
BIRSI MATERNITY & GEN CO-OP HOSPITAL



4

# GRAPH SHOWING DEPOSIT OF

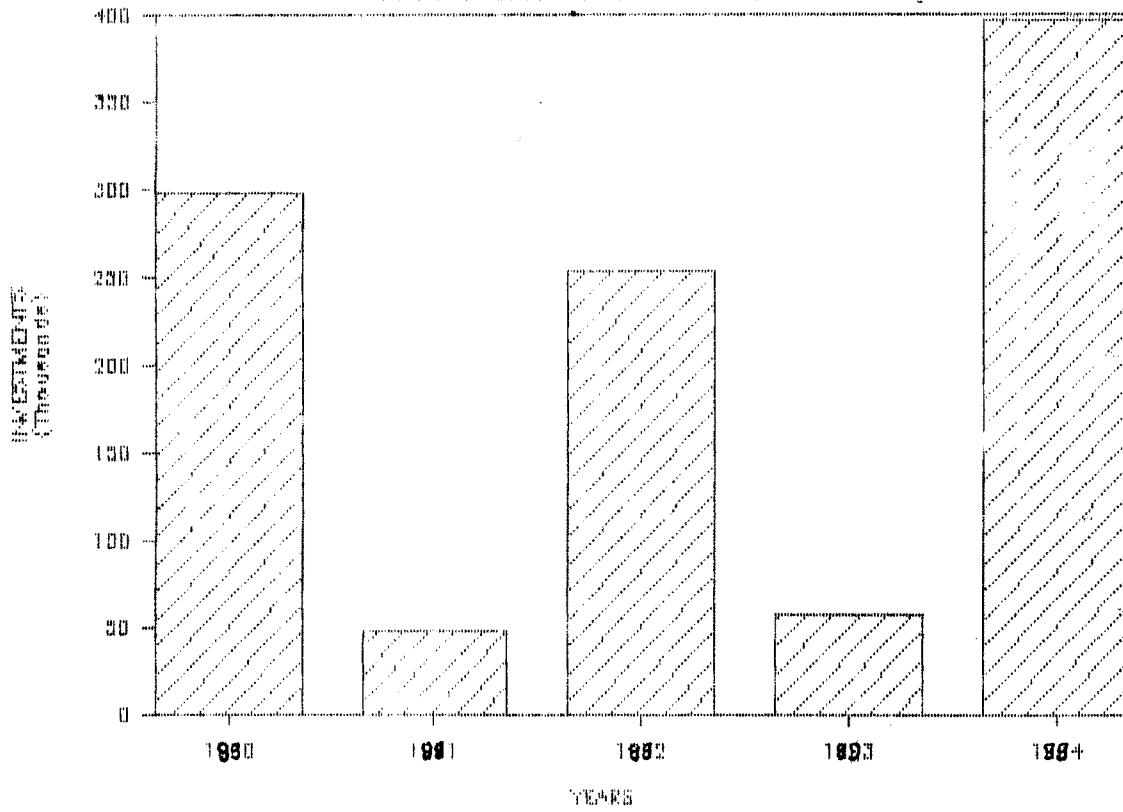
BARSHI MATERNITY & GEN CO-OP HOSPITAL





# 5 GRAPH SHOWING 5 YEARS INVESTMENT

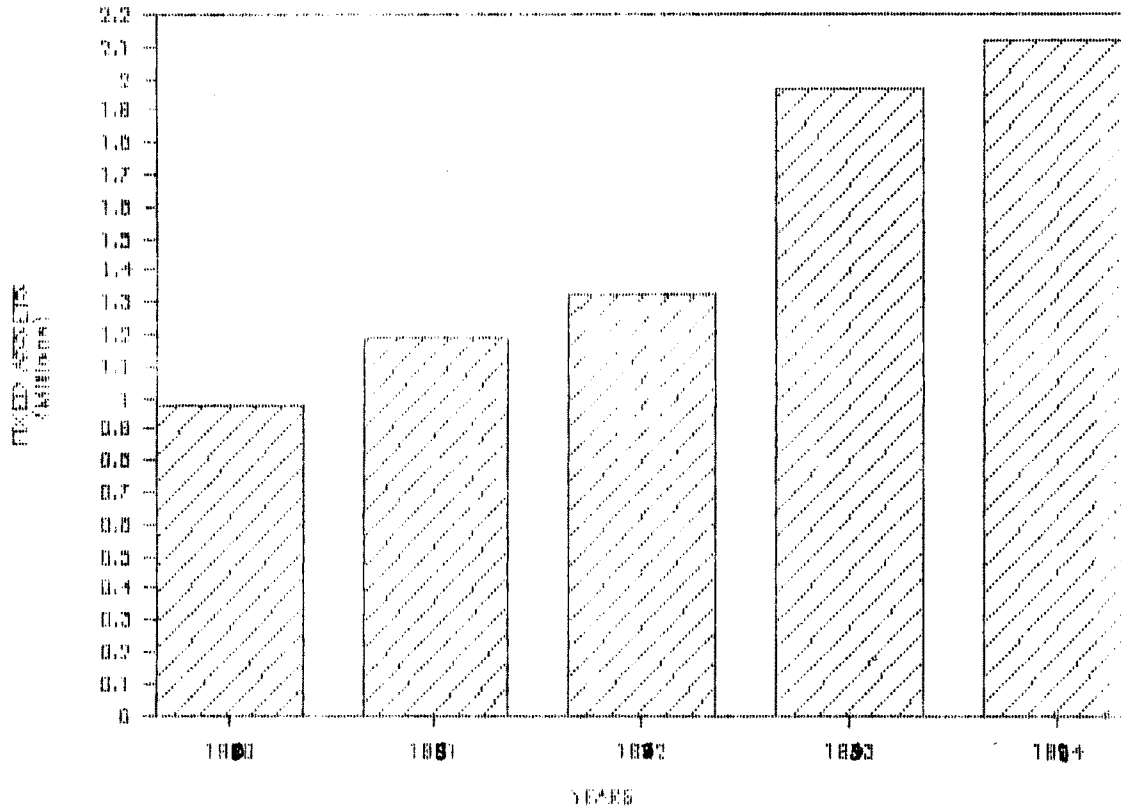
BARSHI WATER SUPPLY & GEN CO-OP HOUSING



6

# GRAPH SHOWING 5 YEARS FIXED ASSETS

PARSI MATERNITY & GEN. LGH-OF HOSPITAL



# 7 GRAPH SHOWING 5 YEARS CURRENT ASSETS

BASIC MATERNITY & GEN. DG-OP HOSPITAL

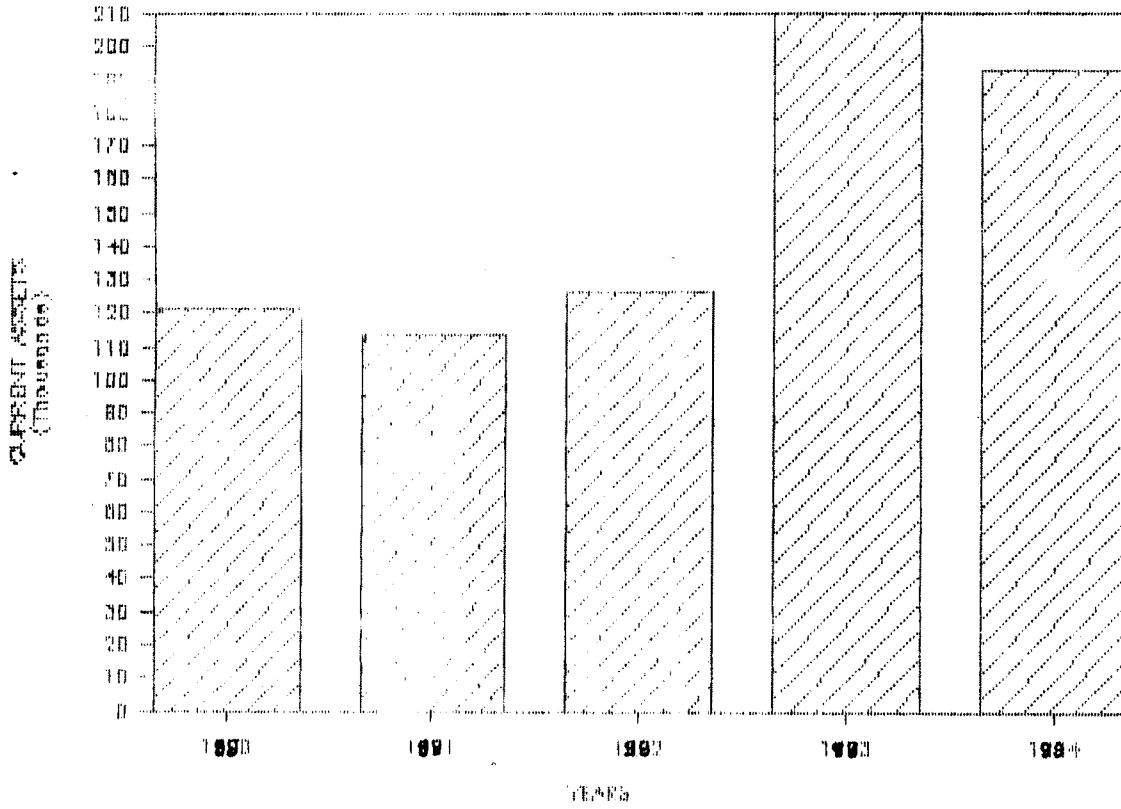


TABLE NO. 3.3

Table showing Total No of Staff Working in  
Barshi Maternity and General Co-operative Hospital  
Year 30/03/1990 to 30/03/1994

Designation	30/3/90 persons	30/3/91	30/3/92	30/3/93	30/3/94
Medical Staff	13	13	13	13	14
Pra-medical staff	07	07	07	07	07
Trained unqualified nurses	20	22	23	30	30
Technicians and compouders	06	07	08	13	13
Administrative staff	12	12	12	12	12
Forth Class employees	28	30	32	36	36
Staff on contract basis	06	08	07	11	11
<b>Total</b>	<b>92</b>	<b>99</b>	<b>102</b>	<b>122</b>	<b>123</b>

Table No. 3.3

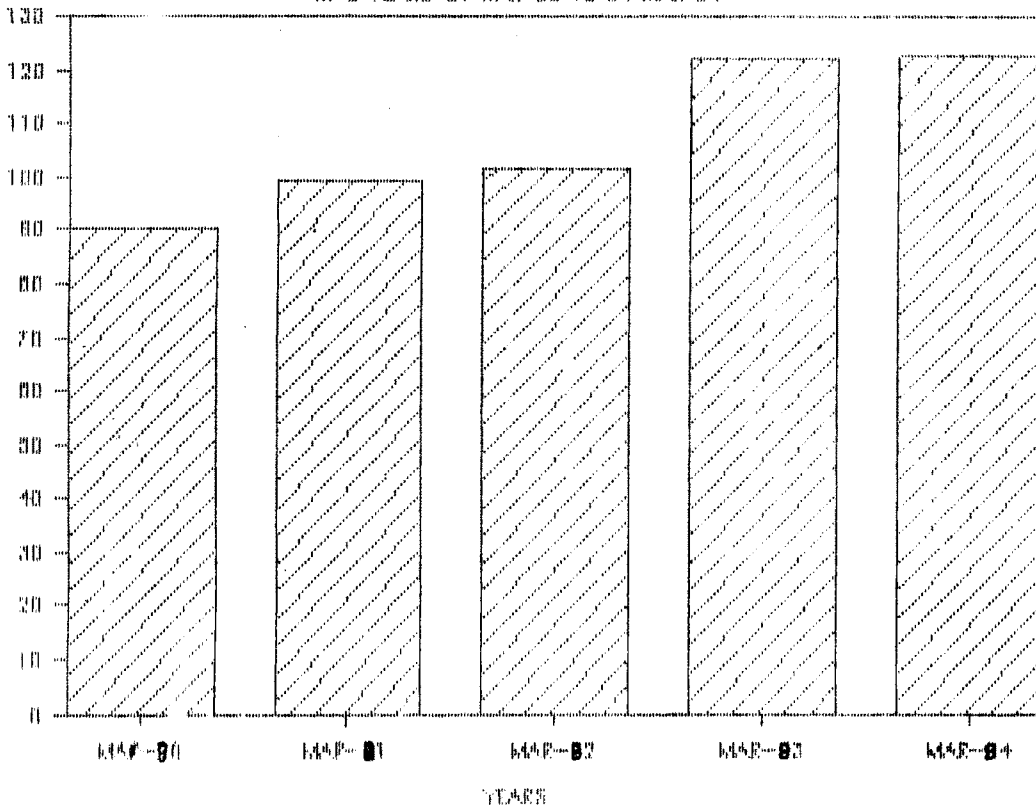
This table shows how the total no of staff is increased from the year 1990 to 1994.

In the year 1990 the medical staff was fixed i.e. 13 persons and para medical staff also fixed.

There is increasing trend in the no of trained nurces and Technicians, as compared to earller years. There is no chage in Administrative staff but in fourth class employees every year they are increased. It shows that the increasing rate is very fast. It means there was net increase of above staff working in hospital.

9 GRAPH SHOWING INCREASING TOTAL NO OF STAFF

IN 5 YEARS 31 MAR 80 TO 31 MAR 84



**TABLE NO. 3.4**

**Growth of No of Member's**

From 30/06/1978 to 30/06/1993

<b>Years</b>	<b>No of Member's</b>
30/06/1978	518
30/06/1979	597
30/06/1980	637
30/06/1981	680
30/06/1982	777
30/06/1989	874
30/06/1990	874
30/06/1991	876
30/06/1992	879
30/06/1993	879

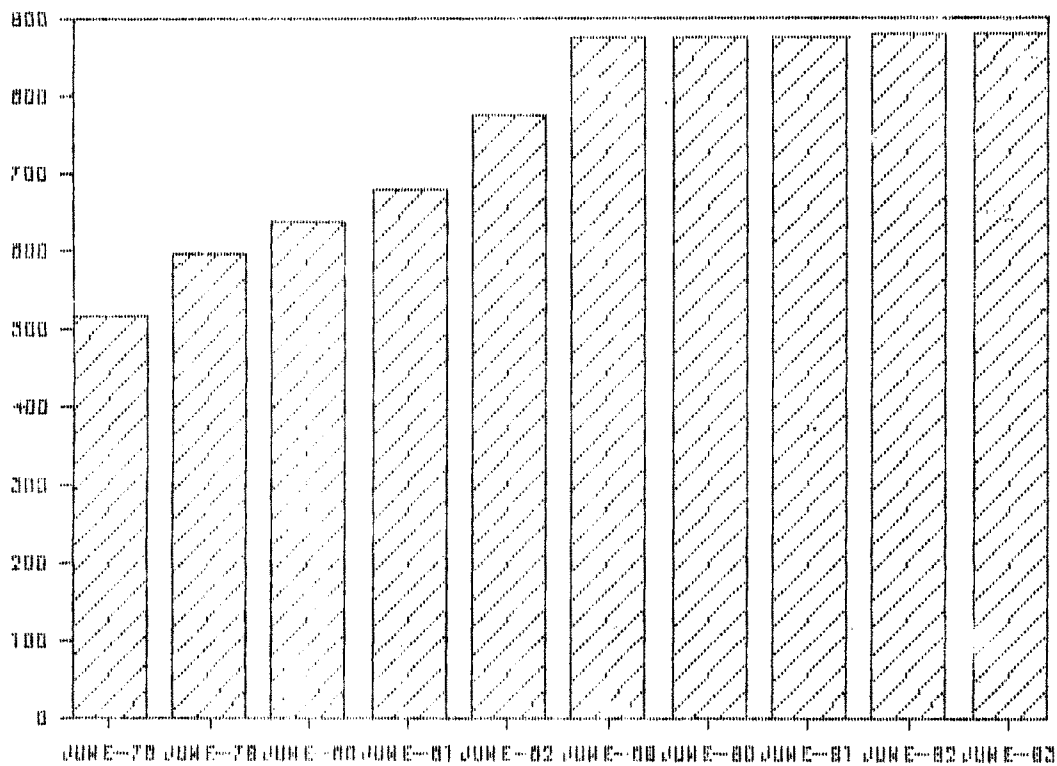
**Source : Hospitals Annual Reports**

**Table No. 3.4**

**Growth of No of Members**

This table shows how the number of members is increased from the beginning of the hospital. In the year 1978 the members were 518 and in the year 1993 the number increased up to 879. It shows that the increasing rate is very slow.

10 GRAPH SHOWING GROWTH OF MEMBEERS



**TABLE NO. 3.5**  
**Table Showing Growth of Share Capital**

From 30/06/1975 to 30/06/1992

Year's	Rupee's
30/06/1975	54,980
30/06/1976	59,540
30/06/1977	61,680
30/06/1978	62,950
30/06/1979	85,950
30/06/1980	92,570
30/06/1981	1,06,010
30/06/1982	1,39,230
30/06/1988	3,06,250
30/06/1989	3,06,275
30/06/1990	3,06,750
30/06/1991	3,06,750
30/06/1992	3,07,260

**Source :** Figures Collected by Annual reports in hospital.

**Table No. 3.5**

**Growth of Share Capital**

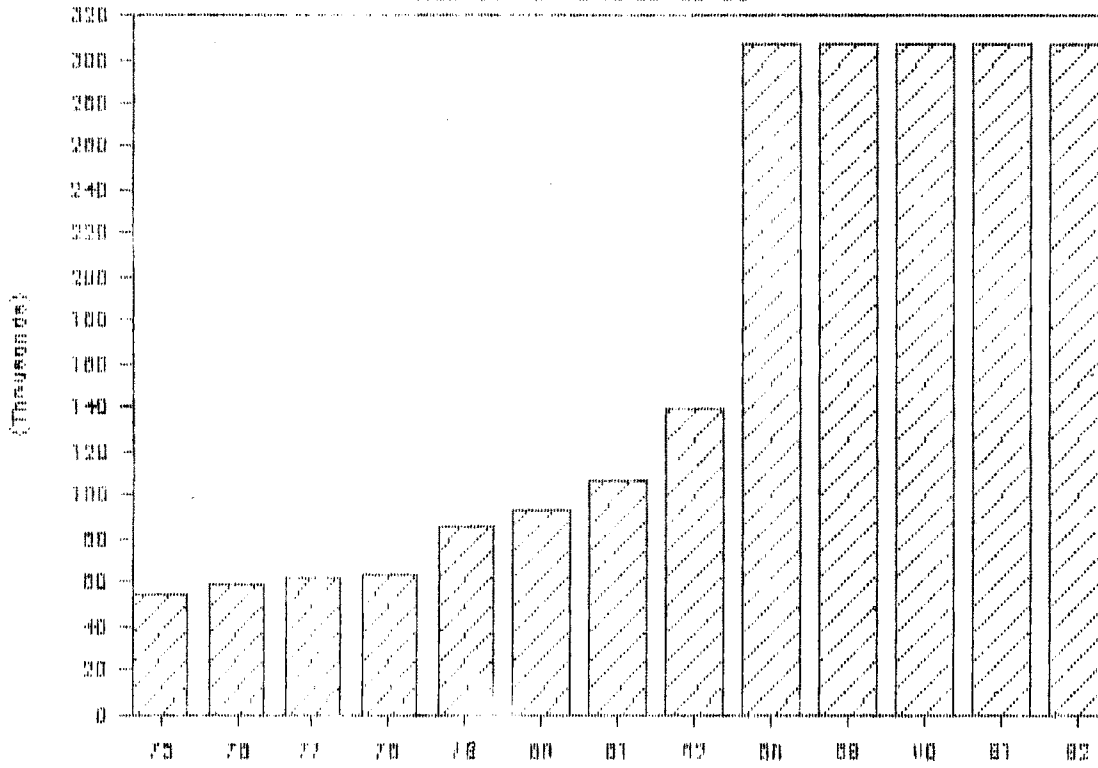
This table shows that how the capital of Hospital is growing

In the year 1975 the capital was only 54980. Which is increased up to 307260 in the year 1992. It shows good signs of the development of the Hospital.



# 1 GROWTH OF SHARE CAPITAL

From 30-08-73 To 30-08-82



**TABLE NO. 3.6**  
**Table Showing Net Profit**  
**From 1973 to 1993**

Years	Profit/Loss	Money
1973-1974	Profit	64,503
1974-1975	Profit	34,985
1975-1976	Profit	12,050
1976-1977	Profit	13,380
1978-1979	Profit	31,430
1979-1980	Profit	27,215
1980-1981	Loss	101
1981-1982	Loss	15
1988-1989	Loss	78,349
1989-1990	Profit	4,038
1990-1991	Profit	1,01,410
1991-1992	Profit	1,62,520
1992-1993	Profit	86,947

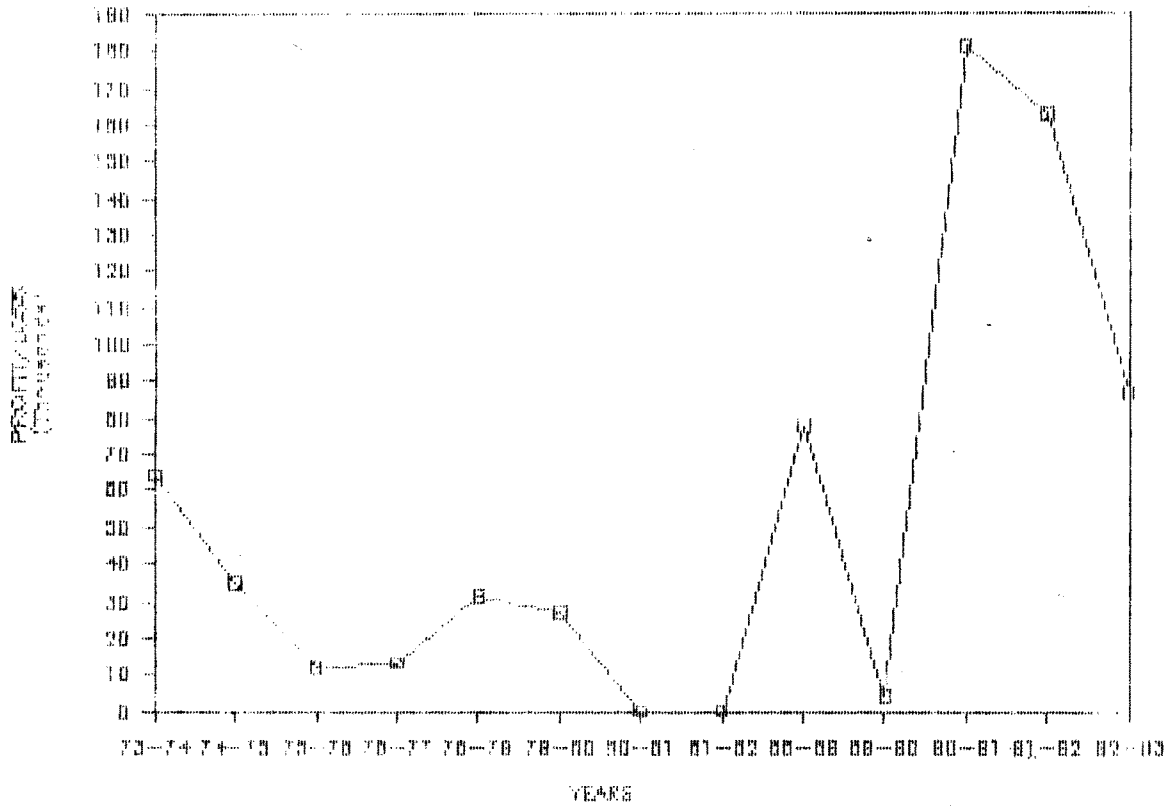
**Table No. 3.6**

**Net Profit from 1973 to 1993**

This table shows the Net Profit earned by the hospital from the year 1973 to 1993. In the year 1973-74 hospital earned a profit of Rs. 64503 and in the year 1980-81 and 1988-89 the hospital was in loss.

# 8 BARSHI MATERNITY & GEN CO-OP HOSPITAL

GRAPH SHOWING NET PROFIT



**TABLE NO. 3.7**

**Table Showing Indoor Patient and Fees of Five Year of  
Barshi Maternity and General Co-operative Hospital**

Year	Indoor Patients	Incoming Fees In Rs.
1990	5787	20,37,019
1991	6690	22,65,478
1992	5527	28,89,378
1993	6377	26,92,030
1994	6116	35,95,968

Source : Hospital's Register's

**Table No. 3.7**

**Indoor Patients and Fees of Five Years :**

This table shows the patients admitted from 1990 to 1994 and fees received from them.

In the year 1990, 5778 patients were admitted and Rs. 20,37,019 were received from them as fees.

In the year 1994, 6116 patients were admitted and Rs. 35,95,968 were received from them as fees.

It shows that as compare to increase in number of patients the increasing rate of fees is very high.

It is due to advance facilities and personal attention given to the patients.

**TABLE NO. 3.8**

**Table showing Outdoor patients and fees of five year of  
Barshi Maternity and General Co-operative Hospital**

Year	Outdoor Patients	Incoming Fees In Rs.
1990	16242	3,12,892
1991	17817	3,81,326
1992	14900	4,89,520
1993	16936	4,78,978
1994	15908	6,08,504

**Source :** Record Available In Hospital Register.

**Table No. 3.8**

**Outdoor Patients and Fees Received :**

This table shows the number of outdoor patients checked in the hospital and fees received from them. The information is given from the year 1990 to 1994 i.e. for five years.

In the year 1990, 16242 patients were checked as outdoor patients and fees received from them was Rs. 3,12,892.

In the year 1994, 15908 patients were checked and Rs. 6,08,504 were received from them as fees.

It shows the number of patients checked as out door patient is decreased but the fees received from them is increased.

This is due to various facilities made available to the patients such as Pathology, Blood testing, Operation equipments etc.

**TABLE NO. 3.9**

**Table Showing 5 Years Information about Operations In  
Barshi Maternity and General Co-operative Hospital**

From 1990 to 1994

<b>Year</b>	<b>Operations</b>	<b>Family Planning</b>	<b>Delavaries</b>
1990	1808	301	681
1991	1838	365	735
1992	1611	292	565
1993	2034	373	683
1994	1878	356	604

**Source :** Annual Report of Hospital

**Table No. 3.9**

**Information about Operations**

The information about the operations done in the hospital is given in this table. This information is given for five years that is from 1990 to 1994.

In the year 1990, 1808 General Operations, 301 family planning operations and 681 delavaries are made in the hospital. The number was 1878 general operations 356 family planning operations and 604 delavaries in the year 1994.