

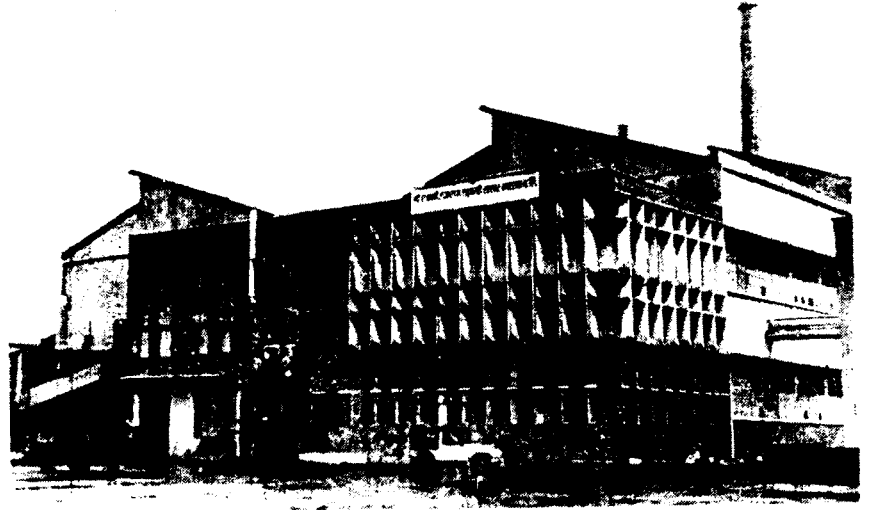
C H A P T E R - I I

BRIEF PROFILE OF SH. CHH. RAJARAM SAHAKARI

SAKHAR KARKHANA LTD., KASABA BAWADA

KOLHAPUR

SHRI CHH. RAJARAM SAHAKARI SAKHAR
KARKHANA LTD., KASABA BAWADA
TALUKA - KARVEER, DIST. KOLHAPUR.



श्री छ. राजाराम सहकारी साखर कारखाना.

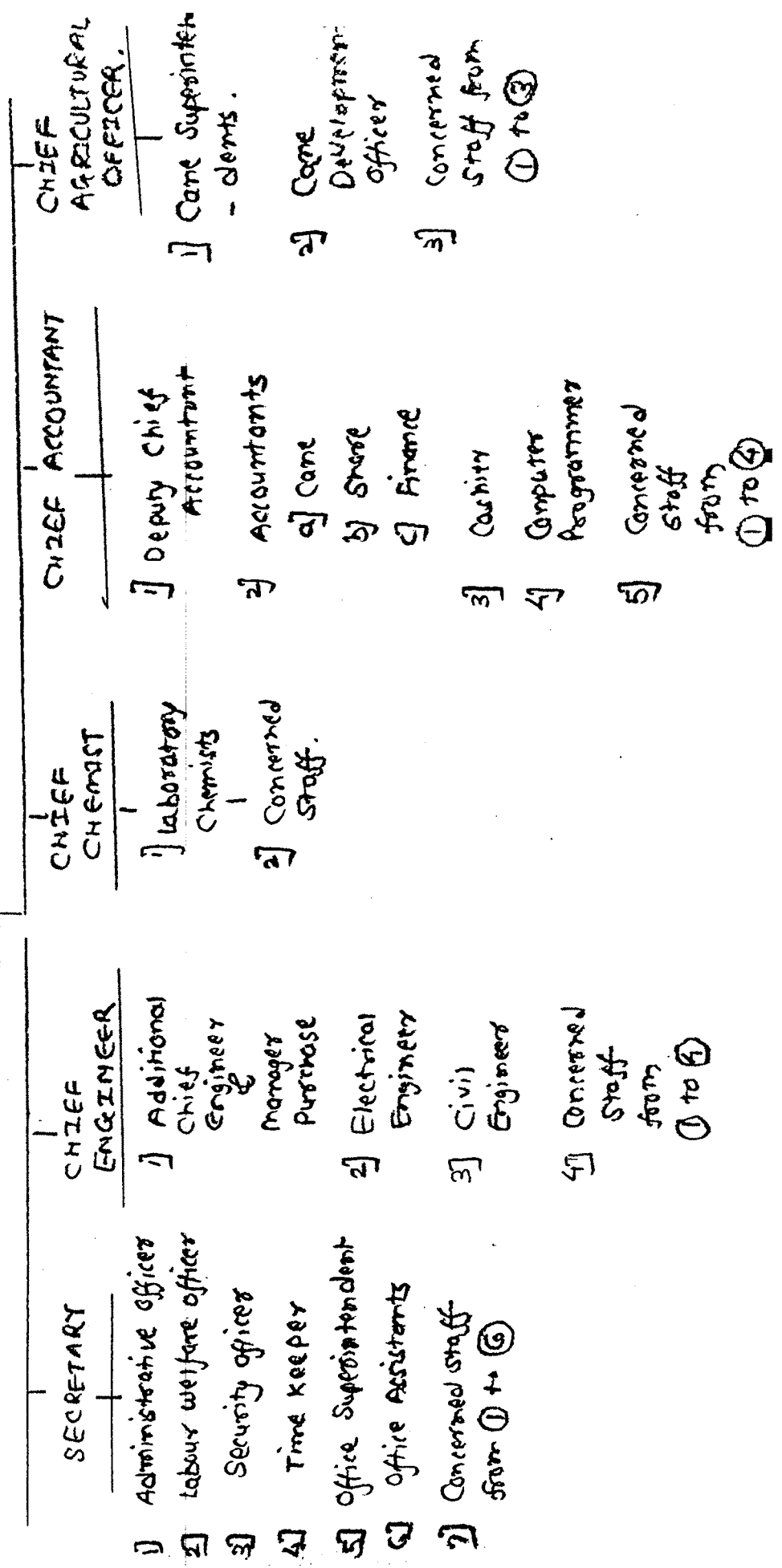
ORGANISATION CHART

MEMBERS

BOARD OF DIRECTORS

CHAIRMAN & VICE CHAIRMAN

MANAGING DIRECTOR



BRIEF PROFILE OF SH. CHH. RAJARAM SAHAKARI SAKHAR KARKHANA
LTD., KASABA BAWADA, KOLHAPUR

The Shri Chhatrapati Rajaram Sahakari Sakhar Karkhana Ltd., Kasaba Bawada, Taluka: Karvir, District: Kolhapur was previously known as the Kolhapur Sugar Mills Ltd., which was founded by Lt. Shrimant Chhatrapati Rajaram Maharaja of Kolhapur Sansthan. The crushing norm or capacity of the Karkhana was 300 tonnes per day.

In the year 1943, the Kolhapur State sold this sugar mill to Mr. Ruia, an Industrialist from Bombay.

In the year 1963, Maharashtra State Farming Corporation was formed by the Government of Maharashtra and the Corporation had taken in hand the leased lands of the sugarcane cultivators of the Kolhapur Sugar Mills Ltd.,. By this reason, the Management had to face the scarcity of cane for crushing, hence the crushing seasons were taken and implemented with available gatecane, hence resulted in losses to the sugar unit and cultivators could not get reasonable cane price from the private management of the Kolhapur Sugar Mills Ltd.,.

To receive reasonable cane price to the cultivators, Usakari Shetkari Sanghtana was formed in the year, 1965 and so many agitations were arranged under the superior leadership of Mr. Bhagwanraoji Chandroji Pawar (Present Chairman of Sh. Chh. Rajaram Sahakari Sakhar Karkhana Ltd.,)

In the year 1972, the Kolhapur Sugar Mills Ltd., bifurcated its sugar unit in the name of the Kolhapur Canesugar Works Ltd.,. The Management of the Kolhapur Canesugar Works Ltd., had implemented various programmes like lift irrigation schemes, supply of fertilizers etc., to grow-up the ratio of production of sugarcane crop.

The Usakari Shetkari Sanghtana had pressed the reasonable and lawful demands of the cultivators to the Government of Maharashtra and as a result of this, the valuation committee was appointed by the Government of Maharashtra under the Chairmanship of the Director of Sugar, Maharashtra State, Pune. The Valuation Committee had valued the entire unit (i.e. The Kolhapur Canesugar Works Ltd.,) at Rs. 6.66 crores. The Government of Maharashtra had formed the Valuation Committee to value the Kolhapur Canesugar Works Ltd., and to step down this

private Sugar Unit into Co-operative sector. Then the owners of the Kolhapur Cane Sugar Works Ltd., sold all the shares of the Sugar Unit to Co-operative Management. In the mean time from the season 1982-83, the Government of Maharashtra appointed Joint Management Committee for managing the day-to-day working of the Sugar Unit and arranged crushing of cane for production of sugar. After the fulfilment of all legal formalities, the co-operativisation of this private unit took place on 11th April, 1984 with a registration number KPR/KVR/PRG/(A)/2(S) 83-84 dated 11th April, 1984.

The first season under the co-operative management, was taken in the year 1986-87.

Regarding the liabilities of cane price dues which are accepted by the Karkhana, Karkhana have paid all the dues in the month of March, 1987. The liabilities of the deposits are also paid for four years. The total amount of payment amounted to Rs.450 lacs. The above mentioned amount is paid by taking Medium Term Loan from the Maharashtra State Co-operative Bank Ltd., Bombay.

This is a unique case of its kind in our country i.e. conversion of a sick joint stock sugar

factory into a co-operative sugar factory to pay all the cane arrears to all the cane growers and revive their aspirations, majority of whom are small and marginal cane growers.

Thus upliftment of these poor people which is one of the major aims of the " 20point programme of the Government of India" is an endeavour of this newly born sugar factory.

Karkhana has installed and commissioned in 1932-33 season and already it has passed 60 years.

During 1957-58 the plant was expanded to 2200 tonnes capacity per day, since then there is no major replacement.

TABLE II-1

CANE CRUSHED FROM 1983-84 TO 1990-91

Season	Cane crushed (M.T.)	
1983-84	1,70,665)
1984-85	2,08,186)
1985-86	2,03,929)
1986-87	3,02,733)
1987-88	3,52,638)
1988-89	3,09,267)
1989-90	3,77,275)
1990-91	3,74,227)

TABLE II-2

RECOVERY OF SUGAR OBTAINED FROM 1983-84 to 1990-91

Season	Recovery (%)	
1983-84	10.92	Under Joint Management Committee.
1984-85	11.07	
1985-86	10.84	
1986-87	10.65	Under the Co-Operative Management.
1987-88	11.15	
1988-89	11.59	
1989-90	11.02	
1990-91	11.82	

TABLE II-3

SUGAR PRODUCED (QUINTALS) (BAGS) FROM 1983-84 TO 1990-91

Season	Bagging (Quintals)	
1983-84	1,86,190	Under Joint Management Committee
1984-85	2,30,460	
1985-86	2,21,140	
1986-87	3,22,290	Under the Co-Operative Management.
1987-88	3,94,050	
1988-89	3,58,520	
1989-90	4,13,920	
1990-91	4,43,045	

TABLE II-4

RATE PER TON. OF SUGARCANE DECLARED BY THE KARKHANA
FROM 1985-86 TO 1990-91

Season	Rate per Tonne (in Rupees)	
1985-86	Rs. 321/-	Under Joint Man.Committee.
1986-87	Rs. 325/-	} Under Co-operative } Management.
1987-88	Rs. 370/-	
1988-89	Rs. 401/-	
1989-90	Rs. 405/-	
1990-91	Rs. 420/-	

The above Tables II-1, II-2, II-3 and II-4 shows that, Karkhana is on a good productive line and maintained efficiency in a very good manner.

The area of operation is spread up in 122 villages of Seven Talukas in Kolhapur District. In order to get best quality cane and increase the efficiency of the factory, Karkhana had implemented Cane Development Programme, under which the factory is supplying new quality seed of cane to member cultivators as well as to the farmers, who supply cane to the Karkhana. Similarly on subsidy, Karkhana is supplying manures, basel dose, paste controlling medicines, spray pumps etc. The Karkhana had implemented so many programmes like,

- 1) Setting up moist, hot air treatment plant,
- 2) Raising Seed Nursery
- 3) Distribution of improved varieties
- 4) Ratoon Management
- 5) Drip Irrigation
- 6) Tube well boring
- 7) Transportation.

These programmes had implemented through Cane Development Fund.

Karkhona has rennovated some machinery in a view to keep the crushing regularly and steadily with minimum losses with higher recovery.

While it was decided by the Government of Maharashtra to transfer Joint Stock Companies into Co-Operative Units, all the concerns were rather suspicious ,whether this step could be sufficiently successful or otherwise. But, under the able guidance and full support by the then Chief Minister Late Padmashri Dr.Vasandraodada Patil and non-stop efforts of present honourable Chairman Shri Bhagwanraoji C.Pawar, the step of co-operativisation proved to be most successful and perhaps,it is the first incident in India to co-operativise Joint Stock Company into Co-Operative Sugar Unit.

Recently Karkhana has formed a well equipped Computer Section for the sake of various types of work with speed and accuracy.

With the affiliation of Karkhana, new harvesting and transport society is established in Co-operative sector, to do all types of works relating to harvesting and transportation of cane.

TABLE II-(5)

NUMBER OF SHAREHOLDERS AS AT 31.3.1991

Sr.No.	Classification	Number of shareholders
1)	'A' class (Productive members)	6,356
2)	'B' class (Co-operative Societies)	33
3)	'B(Class) Individual members	112
4)	Government of Maharashtra	1
		<u>6,502</u>

After Co-Operativisation, all the staff and workers of the Old Kolhapur Canesugar Works Ltd., are transferred to Shri Chhatrapati Rajaram Sahakari Sakhar Karkhana Ltd., with all legal dues.

At the out-set it will be seen that, the former employees of the Kolhapur Cane Sugar Works Ltd., as well as newly recruited employees are seen to be happy over the new management in Co-Operative sector. Similarly, the cultivators who were supplying cane to the previous Kolhapur Cane Sugar Works Ltd., are continuing the supply of cane to Shri Chh. Rajaram Sahakari Sakhar Karkhana Ltd., as a member of the Karkhana, having all the rights as a member which they were not getting in a private concern. This created a feeling of ownership in the members which ultimately leads to the prospect of the Karkhana.
