

Chapter – 04

Progress of Krushi Utpanna Bazar Samittee, Wai.

4.1 Introduction

From the beginning day Krushi Utpanna Bazar Samittee, Wai has done good progress. It has developed step by step. Firstly this market yard was working as sub Market Yard of Satara Krushi Utpanna Bazar Samittee, Satara. But in 1981 it was separated and working as a principal Market Yard with the name of 'Krushi Utpanna Bazar Samittee, Wai'. In 1981 this Principal Market Yard has started its Sub Market Yard in Wai taluka. This development occurred by Krushi Utpanna Bazar Samittee, Wai step by step.

With the help of following points we are exactly known about the A progress Krushi Utpanna Bazar Samittee, Wai

4.2 Progress in the Arrival of Agricultural Commodities

4.2.1 Progress in the Arrival of Agricultural Commodities in Quintals.

Table 4.1

Arrival of Agricultural Commodities.

(In Quintals)

Sr	Commodities	2001-02	2002-03	2003-04	2004-05	2005-06	Total
01	Tomato	10,500	10,500	10,200	10,500	9,250	50,950
02	Potato	7,200	8,500	11,500	10,350	8,500	46,350
03	Brinjals	6,500	7,200	7,500	6,500	3,500	31,200
04	Onion	25,000	28,000	30,750	25,750	20,500	1,30,000
05	Turmeric	18,591	14,910	19,299	23,052	20,292	96,503
06	Jaggery (Gul)	971	864	731	547	921	4,034
07	Wheat	855	550	397	523	700	3025

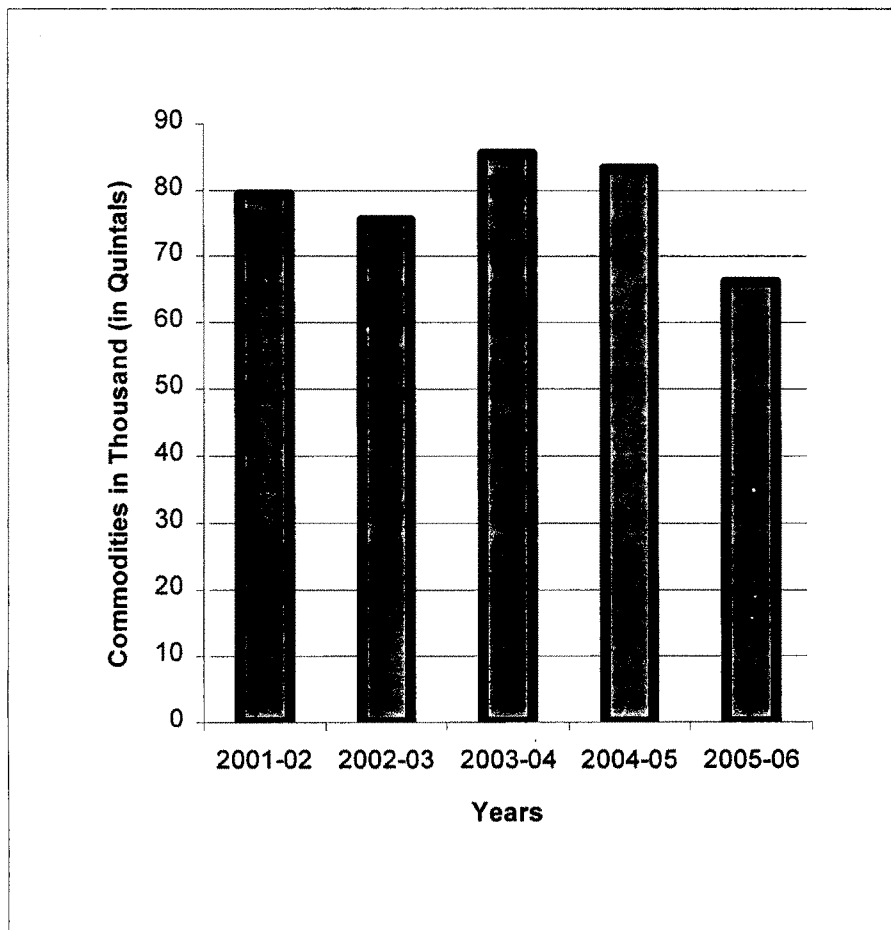
08	Beans	7,094	4,146	3,843	2,391	1,025	18,499
09	Jawar	1,990	523	912	3,460	1,027	7,912
10	Bajari	17	-	2	51	1	71
11	Rice	15	14	6	16	54	105
12	Udid	12	11	14	-	5	42
13	Amaranthus	57	57	64	53	18	249
14	Grams	-	-	-	-	300	300
15	Coriander	294	297	230	32	11	864
16	Groundnut	2	-	-	-	-	2
Total		79,388	75,572	85,448	83,189	66,104	3,89,701

Source : Krushi Utpanna Bazar Samittee, Wai annual report.

Explanation:

Above table shows the arrival of agricultural commodities in the Market Yard of Wai. This table gives us data for last 5 years. It shows only arrival of agricultural commodities with the help of above numerical data the following charts drawn.

Graph 4.1

Arrival of Agricultural Commodities in the Market.**4.2.2 Progressive Average for Arrival of Agricultural Commodities**

Above table and chart gives information about arrivals of agricultural commodities in quintals. These data serially arranged per year with the help of these data we calculated progressive average based on time series. It includes 5-year data from 2001 to 2006. Calculation of progressive average is based on arrivals of agricultural commodities in quintals per year.

Table 4.2
**Calculation of Progressive Average of Arrival
 Of Agricultural Commodities**

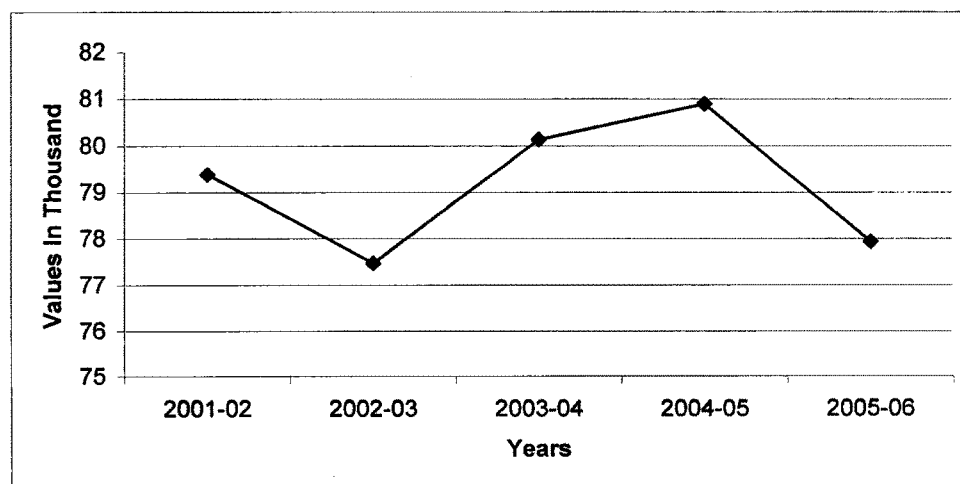
Year	Arrivals of Commodities	Progressive Total	Progressive Average
2001-02	79,388.00	79,388.00	79,388.00
2002-03	75,752.00	1,54,960.00	77,480.00
2003-04	85,448.00	2,40,408.00	80,136.00
2004-05	83,189.00	3,23,597.00	80,889.25
2005-06	66,104.00	3,89,701.00	77,940.20

Explanation:

Above table gives progressive average in the year 2001-02, progressive average in this year is Rs. 79,388/- and in the year 2005-06 it is Rs. 77,940.20/-. This table shows the progressive average constantly increasing up to the year 2004-05. Then it is declined. With the help of following diagram we can easily understand progressive average.

Graph 4.2

Progressive Average of arrival of agricultural Commodities



4.2.3 Arrival of agricultural Commodities in Value

Above information is regarding only arrival of agricultural commodities in the Market Yard of Wai with the help of above data we also collect information of selling these agricultural commodities in Wai Market Yard. Information regarding to progress of agricultural commodities in value. We are discussed below.

Table 4.3

Arrival of Agricultural Commodities

(in Rupees)

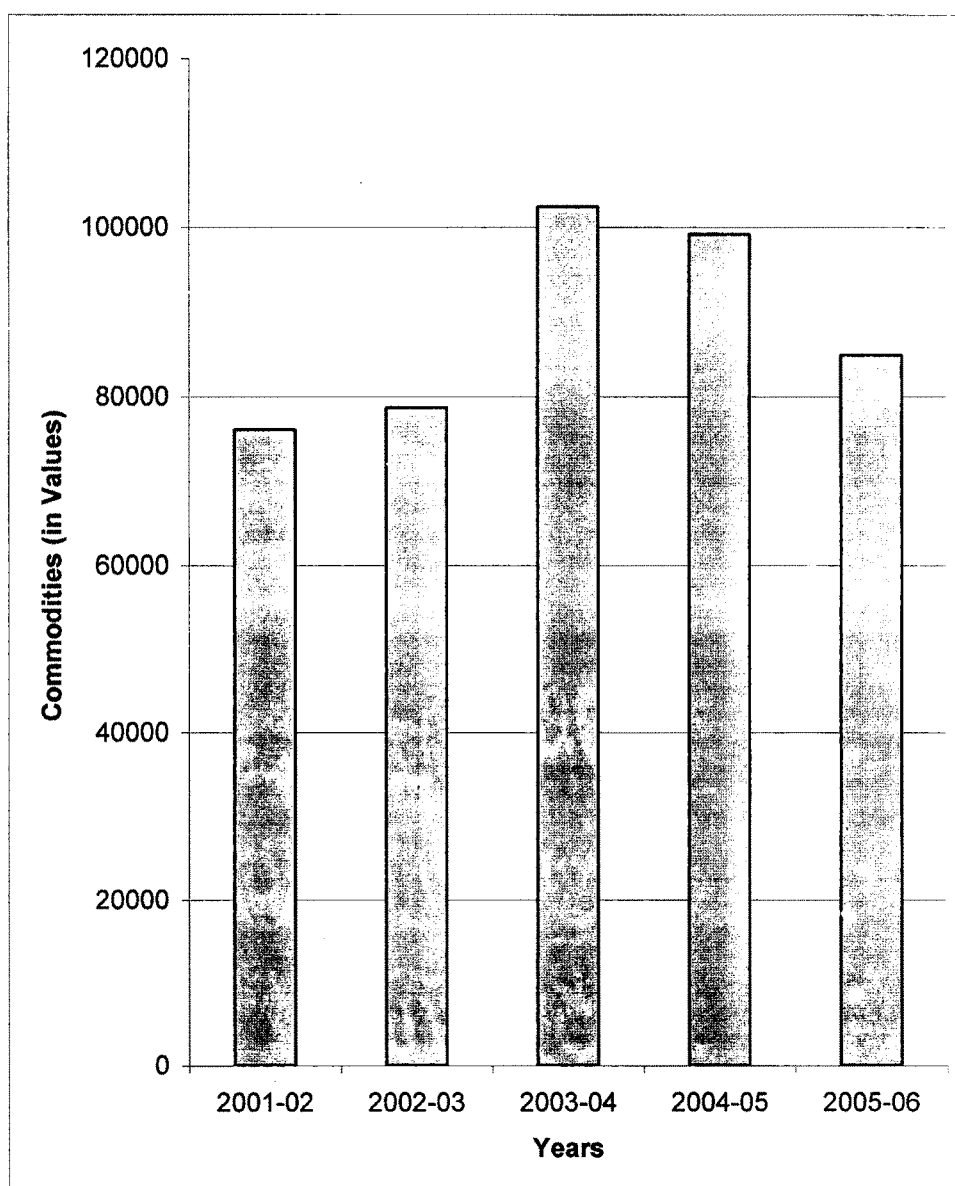
Sr	Commodities	2001-02	2002-03	2003-04	2004-05	2005-06	Total
01	Tomato	42,60,000	43,30,000	30,60,000	31,00,200	43,17,600	1,90,67,800
02	Potato	60,00,000	50,40,000	69,00,000	61,19,955	59,50,000	3,01,09,955
03	Brinjals	35,70,000	30,20,000	30,00,000	19,50,000	35,00,000	1,50,40,000
04	Onion	57,73,700	56,30,000	1,24,57,200	1,27,25,400	92,25,000	4,58,11,300
05	Turmeric	4,24,70,634	4,98,93,033	6,51,80,360	5,96,82,450	5,61,70,326	27,33,96,803
06	Jaggery (Gul)	10,94,507	7,75,481	9,09,851	8,39,745	13,68,160	41,68,474
07	Wheat	6,64,545	4,29,085	3,35,665	3,93,485	6,32,419	49,87,744
08	Beans	1,00,94,514	83,14,533	90,61,973	53,49,930	22,70,200	3,50,91,150
09	Jawar	13,88,545	4,11,460	8,69,840	25,73,410	6,97,105	59,40,360
10	Bajari	7,725	-	1,200	24,350	550	33,825
11	Rice	15,679	23,785	7,150	24,700	1,05,000	1,76,314
12	Udid	18,525	17,360	18,415	-	10,825	65,125
13	Amaranthus	76,005	92,150	89,025	66,400	22,500	3,46,080
14	Grams	-	-	-	-	5,93,325	5,93,325
15	Coriander	7,15,325	7,47,637	5,48,675	62,00,000	20,850	82,32,487
16	Groundnut	2,230	-	-	-	-	2,230
Total		76151934	78724524	102439054	99150025	84883860	441349397

Source : Krushi Utpanna Bazar Samittee, Wai annual report.

Explanation:

Above table shows that arrival of agricultural commodities in value. This table gives us data related in last 5 years of agricultural commodities in value. With the help of above values we can draw a graph showing arrival of agricultural commodities in value.

Graph 4.3

Arrival of Agricultural Commodities (in Value)

4.2.4 Progressive Average of arrival of agricultural commodities in value

Above table and chart gives information about arrivals of agricultural commodities in values. These data separately arranged yearly. There fore with the help of above data we calculate progressive average based on time series. It includes 5 years data from 2001 – 2006 serially. Calculation of progressive average is based on arrivals of agricultural commodities in value.

Table 4.4

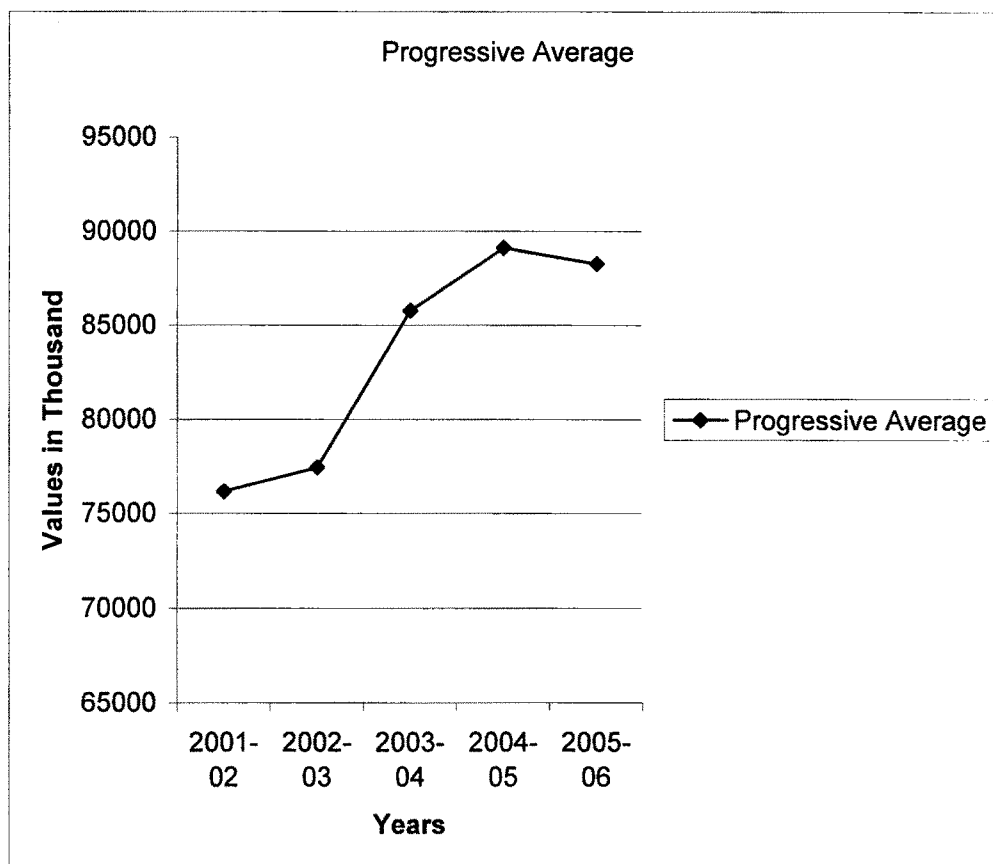
Calculation of Progressive Average

Year	Arrivals of Agricultural Comm. In value	Progressive Total	Progressive Average
2001-02	7,61,51,934	7,61,51,934	7,61,51,934.00
2002-03	7,87,24,524	15,48,76,458	7,74,38,229.00
2003-04	10,24,39,054	25,73,15,512	8,57,71,837.33
2004-05	9,91,50,025	35,64,65,537	8,91,16,384.25
2005-06	8,48,83,860	44,13,49,397	8,82,69,879.50

Explanation:

Above table gives progressive average in the year 2001-02. The progressive average in this year is Rs.7,61,51,934/- and in the year 2005-06 it is Rs.8,82,69,879.50/- It simply means progressive average increasingly. But it increases up to the year 2005. In 2006 it decreases at Rs.87, 143/- with the help of below graph we can easily understand progressive average.

Graph 4.4

Progressive Average of agricultural Commodities in value.**4.3 Progress of Arrival of cattle**

In Krushi Utpanna Bazar Sammittee, Wai arrived cattle on Sub – Market Yard at Panchwad. Panchwad sub market is mainly famous for bull – market. At panchwad sub market yard staff member are collected market fees or any other charges. They are also maintaining these transactions in their records. On every Tuesday this sub market yard is opened for selling and buying of the cattle. In those trade transactions market yard earned market fees and maximum revenue than compare with agricultural commodities. Maximum portion of revenue depends upon these trade transaction.

4.3.1 Arrival of Domestic Animals or Cattle in Panchwad Market Yard

Following table shows the arrival of domestic animals or cattle in agricultural sector in the Panchwad Sub Market Yard.

Table 4.5

Arrival of Domestic Animals or Cattle in Panchwad Sub – Market Yard of Wai

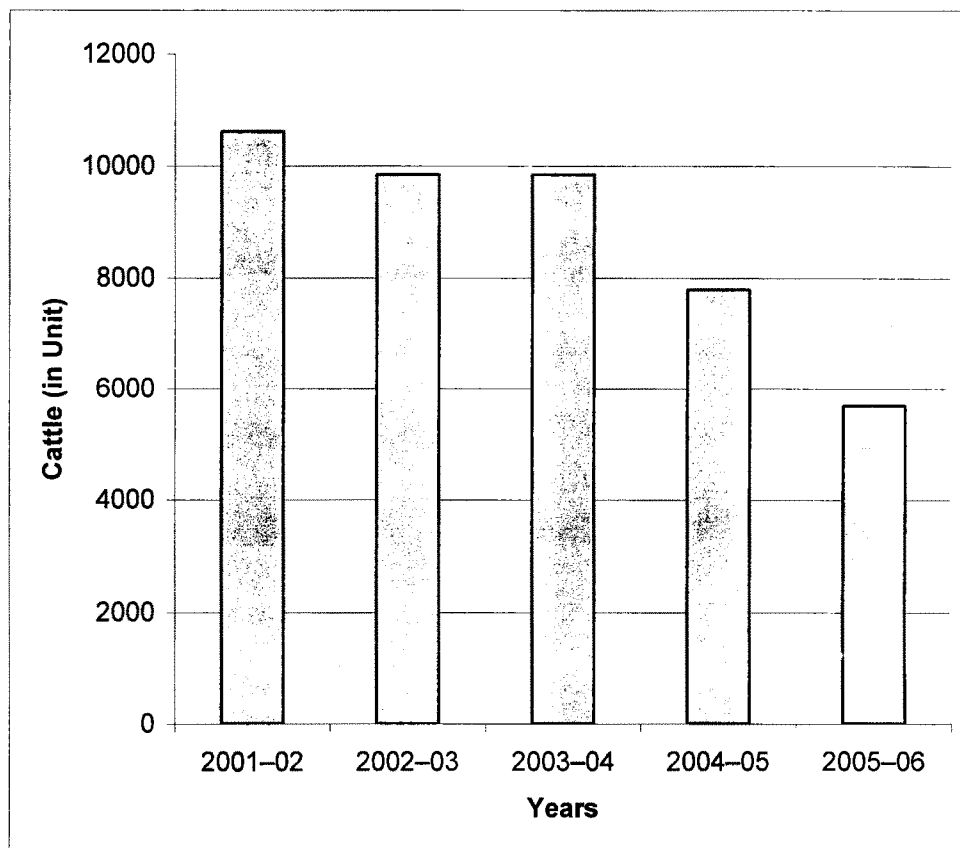
		(in Per Unit)					
Sr	Particulars	2001–02	2002–03	2003–04	2004–05	2005–06	Total
1	Bullocks	1,521	1,430	1,658	844	810	6,263
2	Cows	1,473	1,238	1,760	1,215	506	6,192
3	She Buffaloes	1,162	959	868	912	694	4,595
4	He-Buffaloes	37	37	23	9	12	96
5	Sheeps & Goats	6,421	6,216	5,536	4,813	3,671	26,657
Total		10,614	9,846	9,845	7,793	5,693	43,803

Source: Krushi Utpanna Bazar Samittee, Wai annual report.

Explanation:

Above table shows the arrival of domestic cattle in Panchwad Sub – Market Yard of Wai Market Yard. The above table gives arrivals of cattle in last 5 years from 2001 – 2006. With the help of above data the following chart is drawn. With the help of this graph we easily understand about arrival of cattle in Panchwad sub market yard.

Graph 4.5
**Arrival of Domestic Animals or Cattle in Panchwad
Sub – Market Yard.**



4.3.2 Progressive Average for arrival of cattle

Above table and graph gives information about the arrival of cattle in the year 2001 to 2006 in unit. This data is in per unit arrival of cattle in Panchwad Sub Market Yard. There fore with the help of above data progressive average can be calculated. It is based on Time Series. It includes data of serially 5 years. Calculation of progressive average is based on arrival of cattle in Panchwad Sub Market Yard.

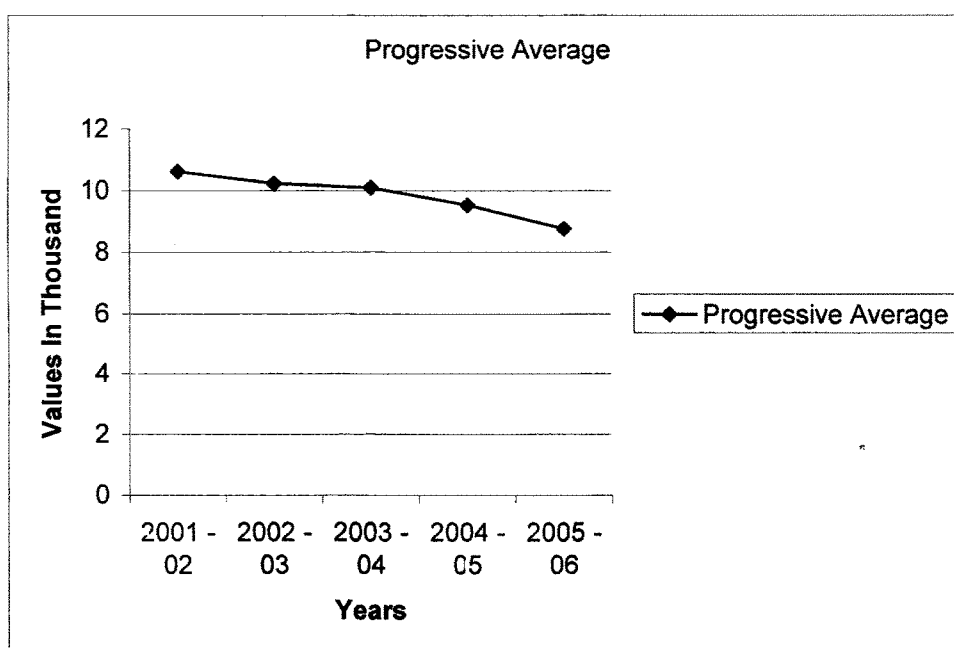
Table 4.6

Calculation of Progressive Average of Cattle

Year	Arrivals of Cattle	Progressive Total	Progressive Average
2001 - 02	10,614	10,614	10,614.00
2002 - 03	9,846	20,460	10,230.00
2003 - 04	9,845	30,305	10,101.67
2004 - 05	7,793	38,098	9,524.50
2005 - 06	5,693	43,791	8,758.20

Above table shows the arrivals of cattle in units. This data shows in statistical manner of progressive average. In the year 2001-02 it show Rs.10,614/- and in the year 2005-06 it shows Rs.8,758.20/- It means it showed decreasing. This position we can easily understand with the help of following graph.

Graph 4.6

Progressive average of arrivals of Cattle

Explanation:

Above graph shows the arrival of cattle in the year 2001 to 2006. In the year 2001 this point shows Rs.10,614/- cattle arrived. But in the year 2006 it shows at Rs.8,750.20/- in comparison of every year we can easily say the arrival of cattle are declined continuously from 1st year to last year.

4.3.3 Arrival of cattle in value at Panchwad Sub – Market Yard.

All above information is regarding to arrival of cattle in per unit. Generally market fees charged on the value of cattle charged. For this purpose Krushi Utpanna Bazar Samitee, Wai keeps records regarding the cattle in value and then charge its market fees.

All above data related only to arrival of cattle in Panchwad Market Yard. Following information is regarding to arrival of cattle in value at Panchwad Sub Market Yard.

Table 4.7

Arrival of Cattle in Value

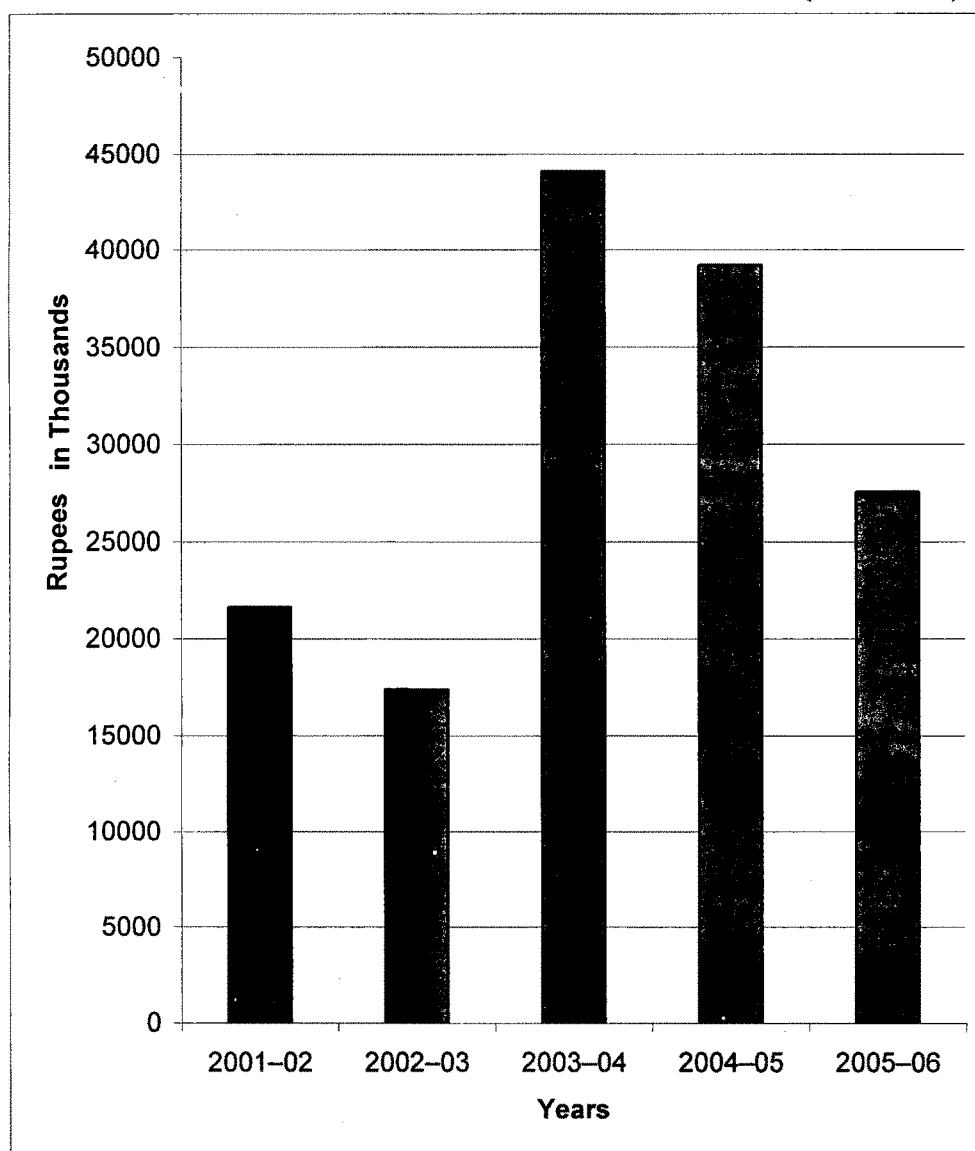
Sr	Particulars	2001-02	2002-03	2003-04	2004-05	2005-06	Total
1	Bullocks	70,68,035	72,88,420	98,88,985	71,29,463	63,80,611	3,77,56,979
2	Cows	69,99,426	90,64,610	26,39,984	18,78,325	74,12,300	6,86,59,426
3	She Buffaloes	40,39,950	45,47,975	43,42,175	92,56,800	1,02,16,950	3,24,03,850
4	He-Buffaloes	1,40,000	2,22,900	87,550	3,75,000	2,46,000	10,68,450
5	Sheep & Goats	33,84,575	43,66,445	33,61,569	36,60,381	32,88,210	1,80,61,180
	Total	2,16,31,986	1,73,90,350	4,40,80,984	3,92,04,894	2,75,44,071	15,79,49,285

Source : Krushi Utpanna Bazar Samittee, Wai annual report.

Explanation:

Above table shows the arrival of cattle at Panchwad Sub Market Yard. This data is related to last 5 years from 2001 to 2006. With the helps of above numerical data we can easily understand about arrival of cattle in value with the help of following graph.

Graph 4.7
Arrival of Cattle
(In Value)



4.3.4 Progressive Average for Arrival of Cattle in value.

Above table and graph shows the arrival of cattle at Panchwad sub market yard in values. With the help of above data we calculate progressive average of arrival of cattle in value.

Table 4.8

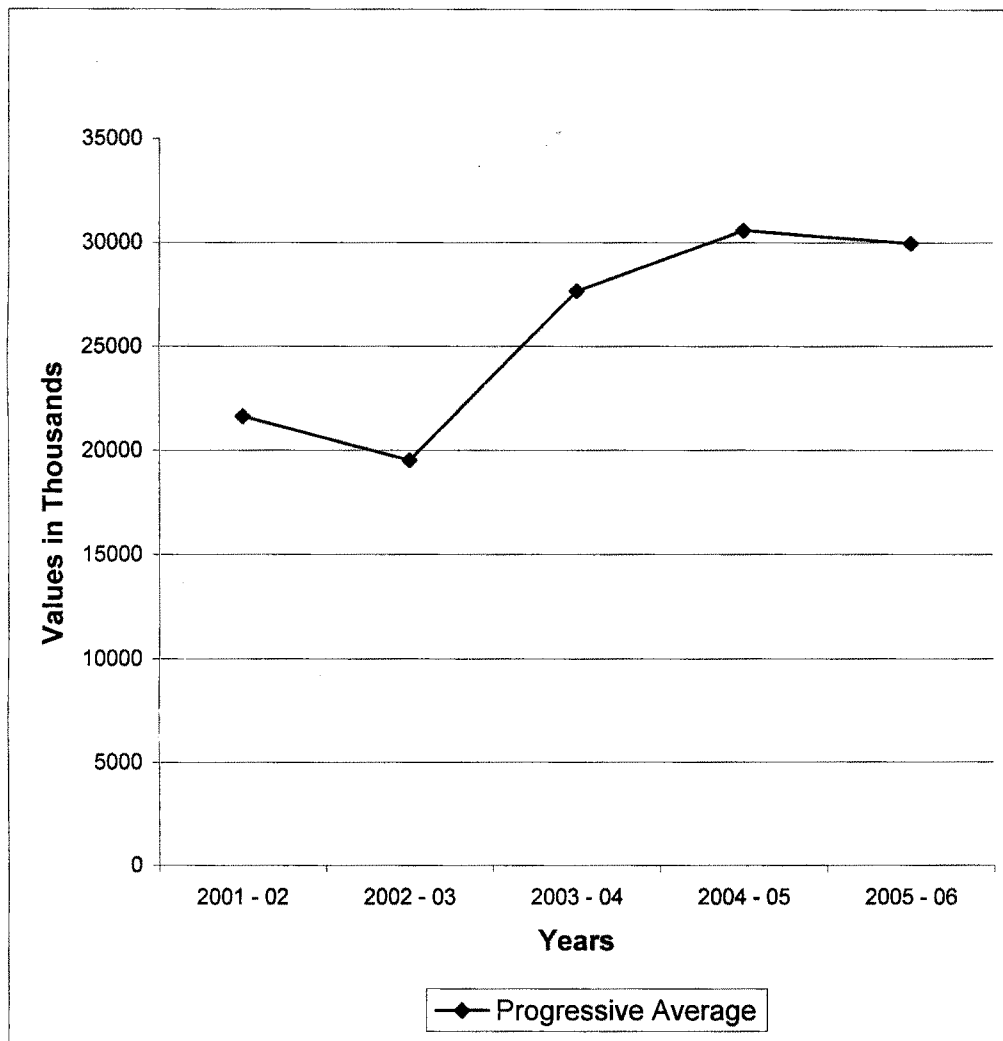
Calculation of Progressive Average of Arrival of Cattle in value

Year	Arrivals of Cattle	Progressive Total	Progressive Average
2001 - 02	2,16,31,986	2,16,31,986	2,16,31,986.00
2002 - 03	1,73,90,350	3,90,22,336	1,95,11,168.00
2003 - 04	4,40,80,984	8,31,03,320	2,77,01,106.00
2004 - 05	3,92,04,894	12,23,08,214	3,05,77,053.50
2005 - 06	2,75,44,071	14,98,52,285	2,99,70,457.00

Explanation:

Above table shows the progressive average of arrival of cattle in value. In the year 2001-02 it shows Rs. 2,16,31,986/- and in the year 2005-06 it shows Rs. 2,99,70,457/- It means arrival of cattle in value goes constantly for easily understand these calculation the following graph is drawn.

Graph 4.8

Progressive Average of Arrivals of Cattle in Value**4.4 Seasonal Fluctuations in arrivals**

Some agricultural vegetables fruits arrive according to the seasons. So in a particular season the traders demand a particular vegetable or fruits. Only for purchasing seasonal products large number of traders visited to the Bazar Samittee. So in a particular season we can easily see the crowd in market.

4.4.1 Commodities

With the help of following table we can easily see the seasonal arrivals of agricultural commodities.

Table 4.9

Seasonal Arrival of Agricultural Commodities

In the year 2005-06

(In quintals)

Sr	Commodities	Oct – Nov	Dec – Jan	Feb – Mar	April - May	June - July	Aug – Sept	Total
01	Tomato	2,100	1,980	2,340	1,890	500	440	9,250
02	Potato	2,010	1,700	1730	1,260	830	970	8,500
03	Brinjals	670	560	765	690	385	430	3,500
04	Onion	4,000	3,600	3800	3,350	2,980	2,770	20,500
05	Turmeric	33	275	11,343	7,094	1,397	150	20,292
06	Jaggery (Gul)	266	373	150	132	-	-	921
07	Wheat	98	107	70	213	64	148	700
08	Beans	780	202	-	-	20	23	1,025
09	Jawar	290	203	82	250	104	98	1,027
10	Bajari	-	1	-	-	-	-	1
11	Rice	2	5	41	6	-	-	54
12	Udid	-	4	1	-	-	-	5
13	Amaranthus	18	-	-	-	-	-	18
14	Grams	32	29	26	152	27	34	300
15	Coriander	10	1	-	-	-	-	11
16	Groundnut	-	-	-	-	-	-	-
Total		6,104	9,040	20,348	15,037	6,307	5,063	66,104

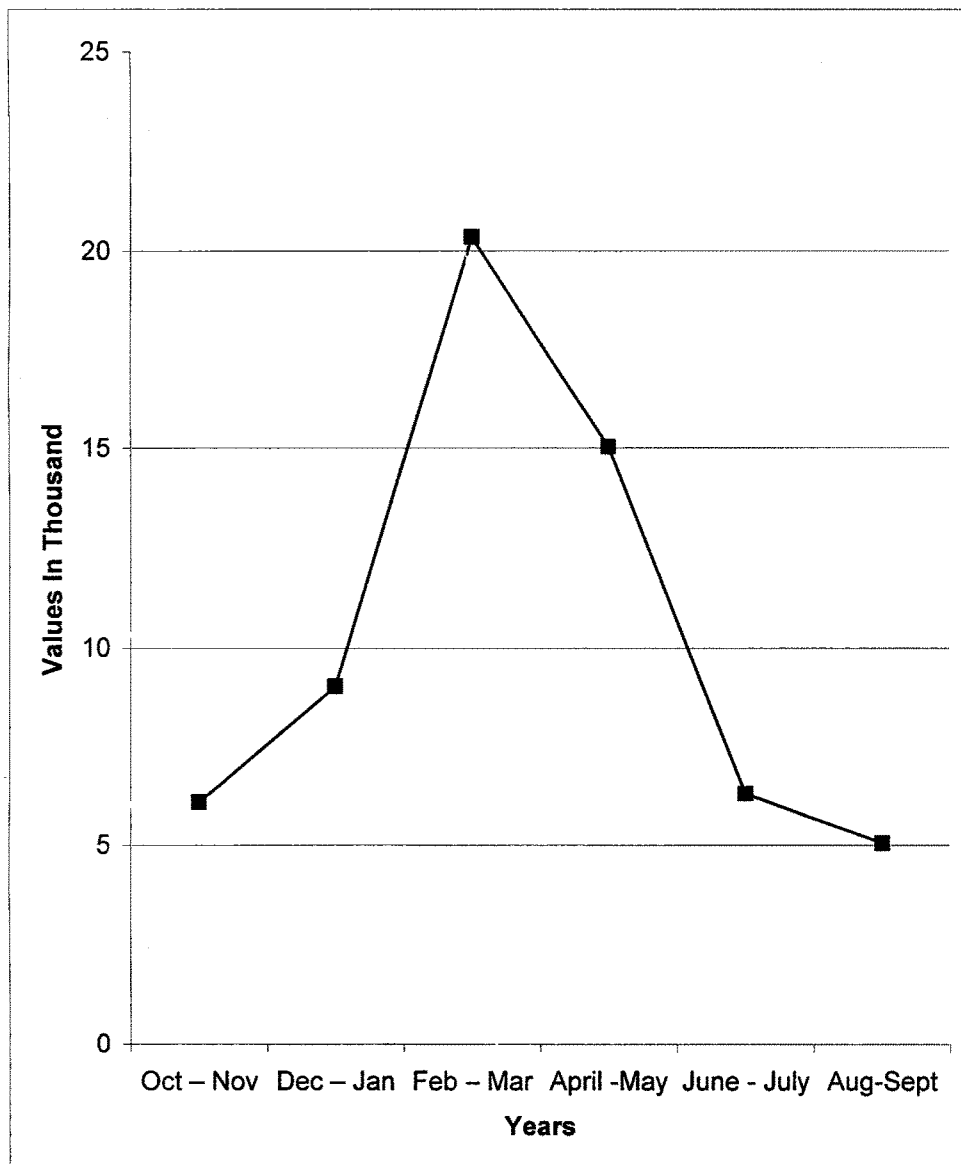
Explanation:

Above table shows the seasonal fluctuations in arrivals of commodities of 2005 – 06 year. This table shows in February to March month. There are large number of commodities arrived. But

from June to November month less commodities arrived. In rainy season less commodities arrived. So in those periods there is a slack season. These seasonal fluctuations can easily understand with the help following chart.

Chart 4.9

**Seasonal Arrival of Agricultural Commodities
In the year 2005-06**



Explanation of Graph

Above graph shows the seasonal fluctuation in arrival of commodities in the year 2005 – 06. In the months October and November arrived commodities are 6,104 quintals. In February and March it shows 20,348 quintals commodities arrived. In August and September it shows decline position.

4.4.2 Seasonal fluctuations in arrival of cattle

Table 4.10

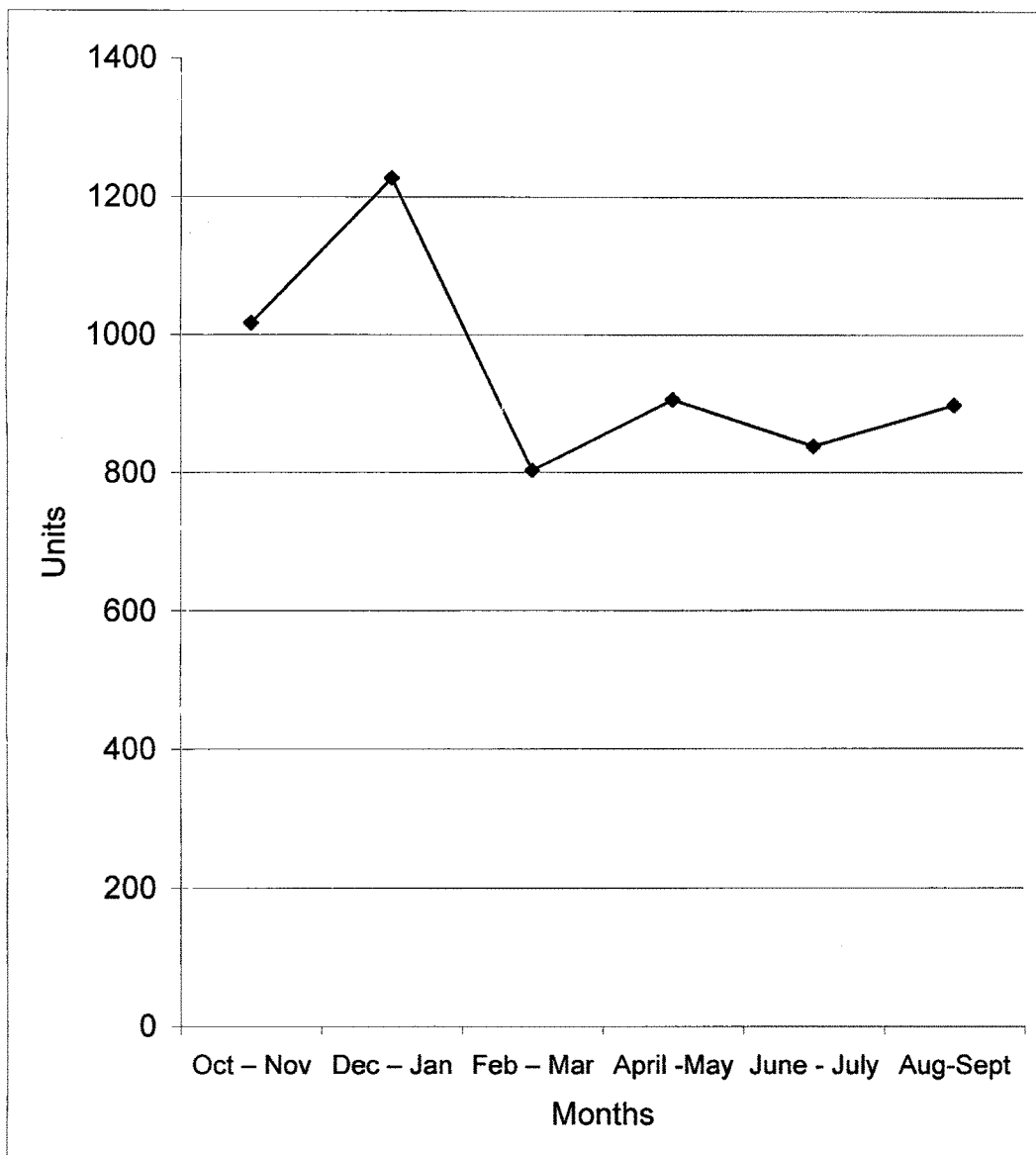
Seasonal fluctuations in arrival of cattle in 2005-06

Sr	Particulars	Oct – Nov	Dec – Jan	Feb – Mar	April - May	June - July	Aug – Sept	Total
01	Bullocks	120	160	103	196	138	93	810
02	Cows	84	127	82	57	65	91	506
03	She Buffaloes	213	195	103	36	34	113	694
04	He Buffaloes	-	-	4	2	2	4	12
05	Shape & Goats	600	745	512	616	600	598	3,671
Total		1,017	1,227	803	907	839	899	5,993

Explanation:

Above table shows the arrival of cattle in the year 2005-06. In the months from October to January large number of cattle arrived in the market. In the months from February to September there are no fluctuations in arrived of cattle. This can be easily understood with the help of following graph.

Graph 4.10

Seasonal Fluctuations in Arrival of Cattle in the Year 2005-06**Explanation:**

Above table shows the arrival of cattle in the year 2005-06. Only in the month December and January more cattle were arrived in the market. Remaining months there no fluctuation in arrival of cattle in the market like other agricultural commodities.

4.5 Financial Position

Krushu Utpanna Bazar Samittee, Wai is mainly established for providing market place for agricultural produce not to earn profit. The income of Market Yard depends upon market fees, license fees or any other charges charged by Krushi Utpanna Bazar Samittee, Wai for healthy transactions. Expenses like wages of staff members, electricity, telephone, maintenance, development of market yard, etc. expenses settled by Krushi Utpanna Bazar Samittee, Wai from its own earnings. If financial position maintained by the Market Committee then it suffers from surplus.

With the help of following points we are discussed the financial items of Krushi Utpanna Bazar Samittee, Wai.

1) Source of Income

Mainly financial position maintained by the Krushi Utpanna Bazar Samittee, Wai with the help of income items. So when Krushi Utpanna Bazar Samittee, Wai take maximum care to earn income with the items it earns maximum revenue.

- 1) Market Fees
- 2) Renew of License Fees
- 3) Government helping
- 4) Supervision Charges
- 5) Other Sources.

When Krushi Utpanna Bazar Samittee, Wai gives maximum attention to earn maximum profit then it earns maximum revenue with the maximum earnings took place then it is beneficial to Krushi Utpanna Bazar Samittee, Wai

2) Expenditures

When expenses are minimum the each institution earns income. Its financial position also good. In case of Krushi Utpanna Bazar Samitte, Wai the expenses of it are maximum than the comparison with income. So it suffers from deficit position.

From the earning income with these incomes Krushi Utpanna Bazar Samitte, Wai spent its expenses. These expenses like

- 1) Development of Market Yard .
- 2) Electricity and Water Supply
- 3) Salaries of Staff Members
- 4) Amenities for market transactions
- 5) Amenities for storage of goods
- 6) Other expenses

Generally the above expenses paid by Krushi Utpanna Bazar Samitte, Wai from its own earnings. When it has to develop the market yard. Government provides long term loans to Krushi Utpanna Bazar Samittee, Wai it also repay the loan according to terms and conditions mentioned for it repay. But all expenses paid by Krushi Utpanna Bazar Samitte, Wai from its own income. So it suffers from deficit position. But it will have to take attention for its deficit position and earn a safe economic condition.

With the help of following table we easily understand the incomes and expenses of Krushi Utpanna Bazar Samitte, Wai from 2001 to 2006 years and its surplus and deficit position.

Table 4.11

Financial position of Krushi Utpanna Bazar Samitte, Wai

Year	Income	Expenses	Surplus / deficit
2001 – 02	19,98,611	22,38,388	(-) 2,93,777
2002 – 03	22,20,777	23,47,861	(-) 1,27,084
2003 – 04	24,18,745	26,67,958	(-) 2,49,213
2004 – 05	23,27,250	26,51,220	(-) 3,23,970
2005 – 06	22,36,063	27,38,373	(-) 5,02,310

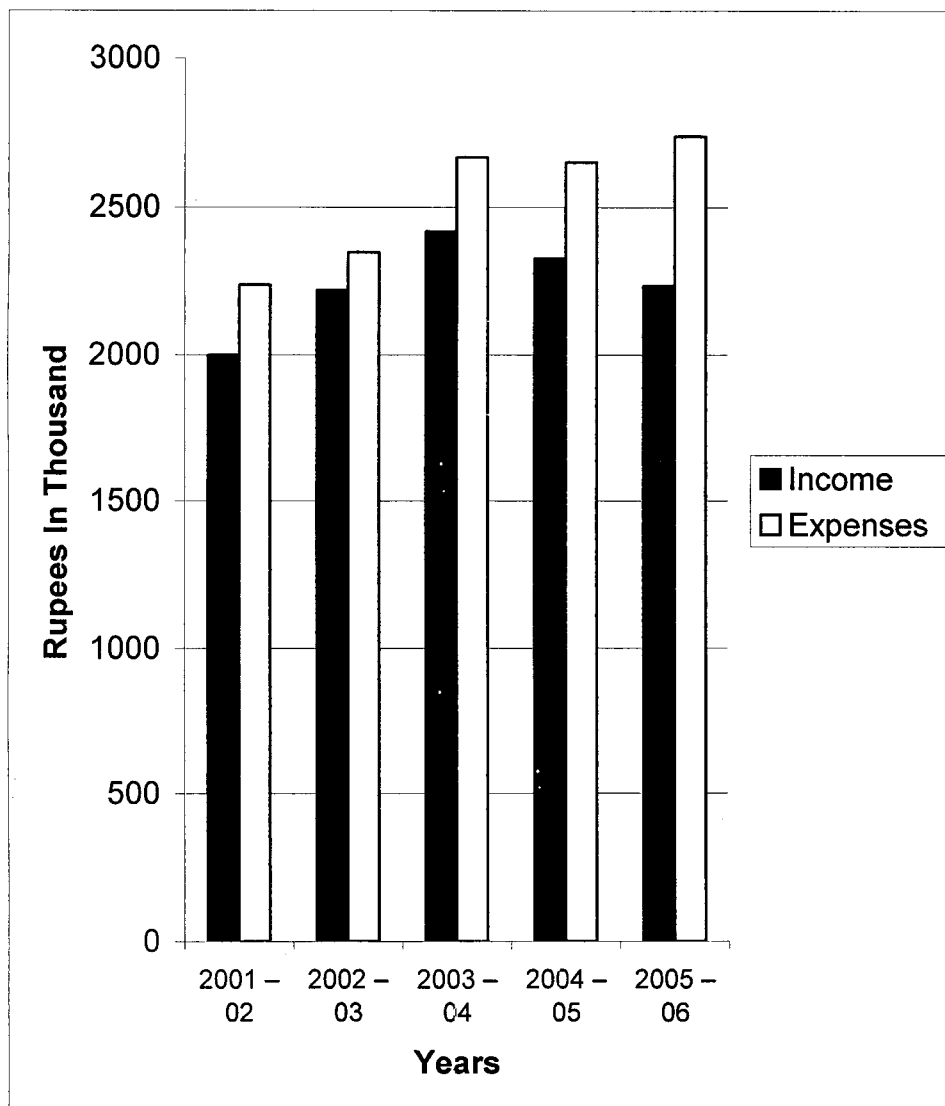
Source - Krushi Utpanna Bazar Samitte, Wai annual report

Explanation :

Above table shows the financial position of Krushi Utpanna Bazar Samitte, Wai. In the year 2001-02 it had deficit Rs. 2,93,777/- then it suffered from deficit continuously. In the year 2006 its deficit is Rs. 5,02,310/-. From 2001-02 its deficit position is increasing continuously.

With the help of above numerical table, following graphs show incomes and expenses related to the years.

Graph 4.11

Financial Position of Krushi Utpanna Bazar Samittee, Wai**Explanation:**

From the above graphs we are easily understand about the position of income earning and paying expenditures. From the year 2001-02 income earnings goes decline. But in case of expenses its graph show that it continuously goes on increasing.

4.6 Progressive Average

4.6.1 Income

With the help of above table we calculate progressive average for income earned by Krushi Utpanna Bazar Samitte, Wai.

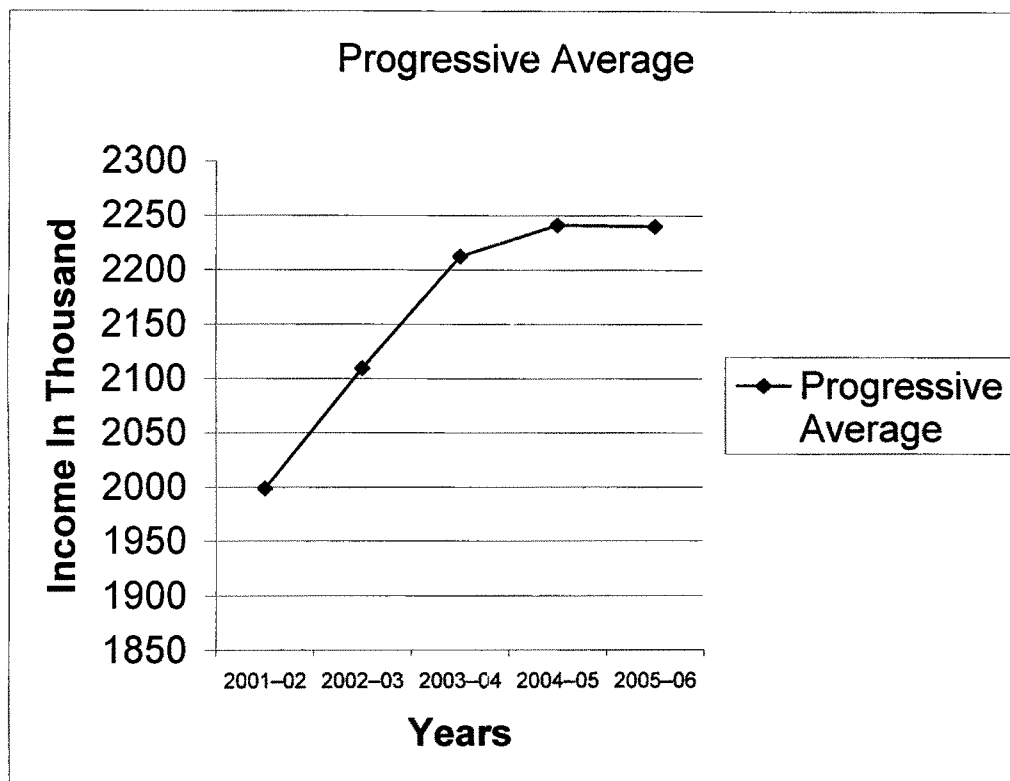
Table - 4.12

Calculation of Progressive Average for Income

Year	Income	Progressive Total	Progressive Average
2001 – 02	19,98,611	19,98,611	19,98,611.00
2002 – 03	22,20,777	42,19,388	21,09,694.00
2003 – 04	24,18,745	66,38,133	22,12,711.00
2004 – 05	23,27,250	89,65,383	22,41,345.75
2005 – 06	22,36,063	1,12,01,446	22,40,285.20

Above table shows the progressive average of income earned by Krushi Utpanna Bazar Samitte, Wai. In the year 2001-02 it shows Rs.19,98,611/- but in the year 2005-06 it shows 22,40,285.20/- It means income are increasing. But it is not sufficient to pay expenses. This position can easily understand with the help of following graph.

Graph 4.12

Progressive Average of Income**4.6.2 Progressive Average for Expenses**

With the help of table no. 4.13 we calculate progressive average for expenses. It is based on time series.

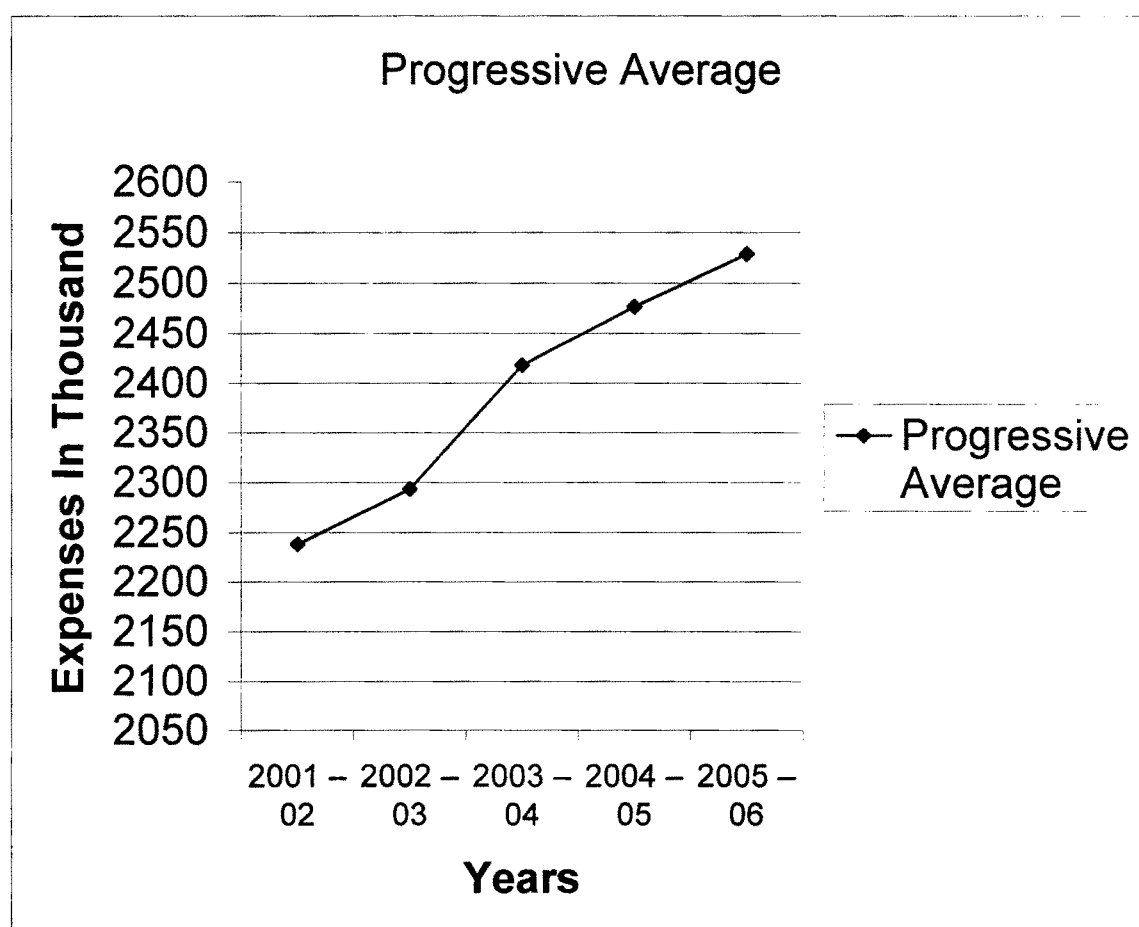
Table - 4.13**Calculation of Progressive Average for Expenses**

Year	Expenses	Progressive Total	Progressive Average
2001 - 02	22,38,388	22,38,388	22,38,388.00
2002 - 03	23,47,861	45,86,249	22,93,124.50
2003 - 04	26,67,958	72,54,207	24,18,069.00
2004 - 05	26,51,220	99,05,427	24,76,356.75
2005 - 06	27,38,378	1,26,43,800	25,28,760.00

Explanation:

Above table shows the progressive average for expenses in the year 2001 to 2006. In the year 2001 to 2002 it shows Rs.22,38,388.00/- It means expenses of Krushi Utpanna Bazar Samitee, Wai continuously went on increasing. This is showed with the following graph.

Graph 4.13

Progressive Average of Expenses**Explanation:**

Above graph shows the progressive average of expenses in the year 2001-2002. Its Progressive average is Rs.22,38,388/- and in the year 2005-06 Rs.25,28,760/-. It means, the expenses of Krushi Utpanna Bazar Samitee, Wai continuously went on increasing.

4.7 Conclusion

This topic is related to financial position of Krushi Utpanna Bazar Samitee, Wai. By studying income and expenses we can say that financial position of Krushi Utpanna Bazar Samitee, Wai is not satisfactorily. It suffers from deficit position and its expenses also increasing continuously. But if Krushi Utpanna Bazar Samitee, Wai will take care of its expenses and will make arrangement for earning maximum revenue. It will be suffer from good economic condition.

