

Chapter – 5**ROLE OF PANCHAYATS IN RURAL DEVELOPMENT**

- 5.1 Introduction
- 5.2 Concept of Rural Development
- 5.3 Components of Rural Development
- 5.4 Indicators of Rural Development
- 5.5 Scope of Rural Development
- 5.6 Role of Village Panchayats in Rural Development
in Panhala Taluka of Kolhapur District
- 5.7 Rural Development by Village Panchayats : A Breakup
- 5.8 Concluding Remarks
- 5.9 References

Chapter – 5

ROLE OF PANCHAYATS IN RURAL DEVELOPMENT

5.1 Introduction

Rural development has a special importance due to its social dimension in the country like India. Likewise, rural development only will achieve the rapid and all round development of the Indian economy as a whole. The inadequate information and data availability is a major difficulty and problem in macro approach of study, which requires micro approach in study along with dependence on primary sources of data and information collection.

Rural development is a very complex subject to handle because of its range of contents and its dimensions. However, it brings in social consciousness; it is identified as a revolution of some type. It is liberating force. Its main purpose is that a restructuring and modernization of the traditional society and the rural setting should consciously begin, just as the concept of total revolution envisages peaceful transformation in all spheres of life, the programme of rural development must cover all aspects of rural life. ¹

5.2 Concept of Rural Development

The concept of rural development has a special importance in the economy like India, because its majority of population (72%) stays in the rural areas only. Hence, rural development is the development of the Indian economy as a whole. It is only the rural development that will convert the Indian underdeveloped economy into developed one. Therefore, the attempts should be made to materialize and speed up socio-economic development of the rural areas, which will enable achieving the goal of rural development.

According to World Bank ² "Rural development is a strategy to improve the economic and social life of a specific group of people, the rural poor, including small and marginal farmers, tenants and the landless."

Robert Chamber³ says, "Rural development is a strategy to enable a specific group of people, poor, rural women and men, to gain for themselves and their children more of what they want and need. It involves helping the poorest among those who seek a livelihood in the rural area to demand and control more of the benefits of rural development."

"Rural development is a process of developing and utilising natural and human resources, technologies, infrastructural facilities, institutions and organizations and government policies and programmes to encourage and speed up economic growth in rural areas to provide jobs and to improve the quality of rural life towards self sustenance." ⁴

"Strategies, policies and programmes for the development of rural areas and the promotion of activities carried out in areas, such as agriculture, forestry, fishery, rural crafts and industries, building of the social and economic infrastructures with the ultimate aim of achieving a fuller utilisation of available physical and human resources and thus higher incomes and better living conditions for the rural population as a whole particularly the rural poor, and effective participation of the latter is the development process." ⁵

Again the World Bank defines rural development as "improving the living standards of the masses of the low income population residing in rural areas making the process of rural development self sustaining." ⁶

Rural development is a process which leads to a continuous rise in the capacity of the rural people to control their environment accompanied by a wider distribution of benefits resulting from such control." ⁷

"The critical element in the rural development is improvement of living standards of the poor through opportunities for better utilisation of their physical and human resources in the absence of this utilisation of rural resources has no functional significance. Making the process of rural development self sustaining not only implies the mobilization of capital and use of technology for the benefit of the poor, but their active involvement in the building up of institutions as well as functioning of these." ⁸

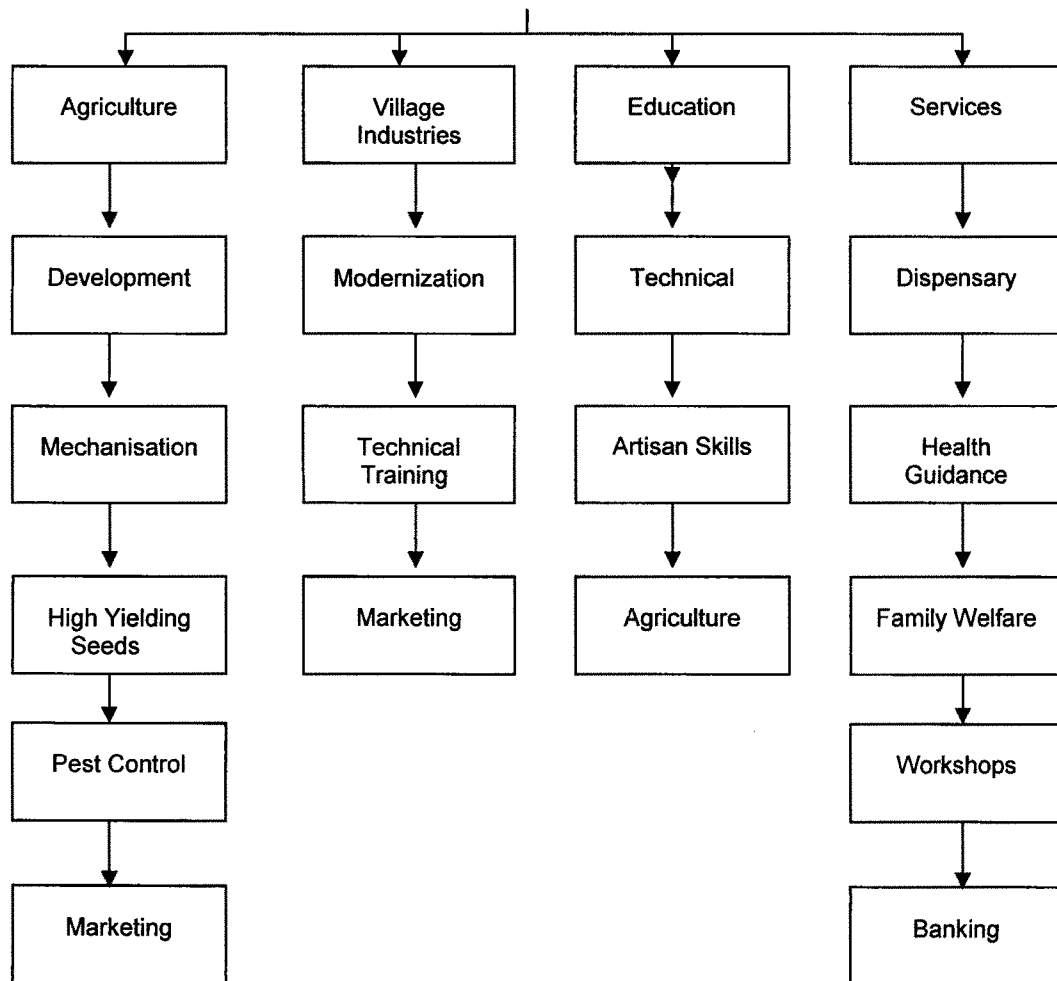
"Rural development encompasses 1) improvement in levels of living including employment, education, health and nutrition, housing and variety of social services, 2) decreasing inequality in the distribution of rural incomes and in rural-urban balances in incomes and economic opportunities and 3) the capacity of the rural sector to sustain and accelerate the pace of these improvements." ⁹

According to Ensminger "Rural development seeks to involve a process of transformation from traditionally oriented rural cultural towards an acceptance and reliance on science and technology." ¹⁰

5.3 Components of Rural Development

Rural development in the ultimate analysis involved the provision of opportunities for the optimum utilisation of the human resources in rural areas. Human resource development in its turn can take place only on the foundation of adequation nutrition and work opportunities. It is therefore, necessary to base rural development programmes with the primary aim of providing opportunities for the human population to achieve optimum expression of their physical and mental potential such programme should have the following four major components.

Rural Development



5.4 Indicators of Rural Development

Uphoff and Esman identify seven dimensions of rural development in their study of eighteen country cases aimed at establishing relationship between local organisation and rural development.

1. Agricultural productivity measured in terms of average cereal yields per hectare and per capital total agricultural production.

2. Improved technology measured in terms of use of fertilizers per hectare, irrigated area as percent of cultivated area and adoption of high yielding varieties of cereals, rice and wheat.
3. Rural welfare measured in terms of levels of nutrition, health and education.
4. Security measured in terms of protection from natural disaster, protection against violence and access to justice.
5. Income distribution measured in terms of the ratio of income accruing to the top 20 percent of households vis-a-vis that accruing to the bottom 20 percent.
6. Rate of population growth and level of employment.
7. Political administrative participation measured in terms of electoral participation, control of bureaucracy, influence on rural development policy and allocation of public services and resources.

5.5 Scope of Rural Development

The scope of rural development is very vast. Yet an attempt has been made here to indicate some of broad areas of rural development, which needs an integrated approach.

1. Developing social consciousness of people about rural development and its lasting benefits.
2. Solving the basic needs, problems by collective decision making and collective action.
3. Building up dedicated village leadership.
4. Use of science and scientific knowledge to devise appropriate technology for improving productivity at all levels.

5. Development of agriculture and allied sector.
6. Improved water management by building tanks, small dams on the nullas and building canals etc.
7. Creating new employment opportunities by subsidiary occupations.
8. Developing cottage and village industries based on local resources.
9. Developing non farming skills to promote and sustain service sector.
10. Developing an efficient delivery system leading to easy supply of inputs, credit and good outlet for their products.

5.6 Role of Village Panchayats in Rural Development

The table below represents role of Village Panchayats under our study in rural development. In the rural development, there are two most important factors or components like social services and economic services.

Table No. 5.1

Role of Village Panchayats in Rural Development

Year	Total Expenditure	Rural Development Expenditure	Social Expenditure	Economics Expenditure
1) Kodoli				
2000-01	700000			
2001-02	3509000	788000 (100)	583000 (73.99)	2050001 (26.01)
2002-03	7164840	1450000 (100)	925000 (63.79)	525000 (36.21)
2003-04	5096000	1220000 (100)	910000 (74.59)	310000 (25.41)
2004-05	7707400	1637500 (100)	1387500 (84.73)	250000 (15.27)
2005-06	7700330	1925000 (100)	1650000 (85.71)	275000 (14.29)
2006-07	7971830	1925000 (100)	1650000 (85.71)	275000 (14.29)
2007-08	8713330	1695000 (100)	1370000 (80.83)	325000 (19.17)

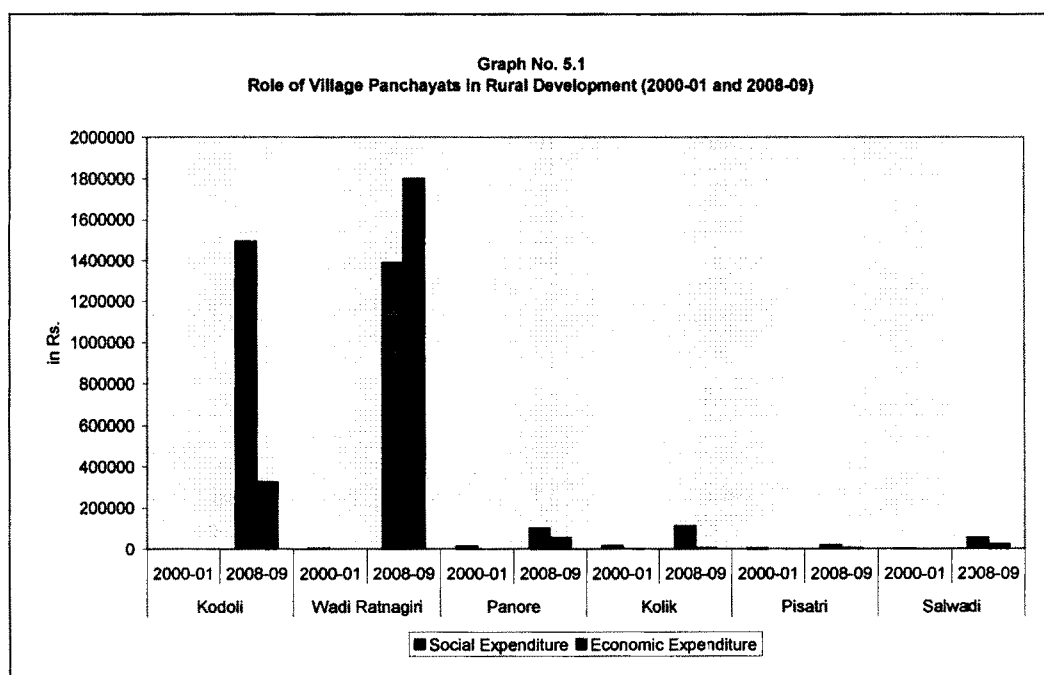
Year	Total Expenditure	Rural Development Expenditure	Social Expenditure	Economics Expenditure
2008-09	8673330	1820000 (100)	1495000 (82.14)	325000 (17.86)
CGR	25.07	10.21	13.33	0.67
2) Wadi Ratnagiri				
2000-01	403000	4500 (100)	4500 (100)	--
2001-02	433633	94221 (100)	51721 (54.89)	42500 (45.11)
2002-03	628375	209282 (100)	198131 (94.67)	11151 (5.33)
2003-04	1270500	389700 (100)	305700 (78.45)	84000 (21.55)
2004-05	1278000	449000 (100)	315000 (70.16)	134000 (29.84)
2005-06	1730000	1623000 (100)	715000 (44.05)	908000 (55.95)
2006-07	1742000	283000 (100)	275000 (97.17)	8000 (2.83)
2007-08	3719227	1509297 (100)	501297 (33.21)	1008000 (66.79)
2008-09	5773723	3190000 (100)	1390000 (43.57)	1800000 (56.43)
CGR	33.27	75.83	68.27	47.12
3) Panore				
2000-01	134180	14869 (100)	14869 (100)	--
2001-02	103994	61305 (100)	59425 (96.93)	1880 (3.07)
2002-03	104165	61273 (100)	54008 (88.14)	7265 (11.86)
2003-04	306700	233000 (100)	76000 (32.62)	157000 (67.38)
2004-05	333500	247000 (100)	89000 (36.03)	158000 (63.97)
2005-06	402000	300000 (100)	92000 (30.67)	208000 (69.33)
2006-07	445049	446761 (100)	96155 (21.52)	350606 (78.48)
2007-08	790700	183600 (100)	100000 (54.47)	83600 (45.53)
2008-09	224080	158700 (100)	101700 (64.08)	57000 (35.91)
CGR	20.74	32.72	19.31	58.67

Year	Total Expenditure	Rural Development Expenditure	Social Expenditure	Economics Expenditure
4) Kolik				
2000-01	58651	17267 (100)	16817 (97.39)	450 (2.61)
2001-02	31387	9056 (100)	8156 (90.06)	900 (9.94)
2002-03	62882	41263 (100)	40563 (98.07)	800 (1.93)
2003-04	95140	53100 (100)	51100 (96.23)	2000 (3.77)
2004-05	176240	85100 (100)	83100 (97.65)	2000 (2.35)
2005-06	171240	89600 (100)	186100 (98.15)	3600 (1.85)
2006-07	205293	112100 (100)	108600 (96.88)	3500 (3.12)
2007-08	214830	118600 (100)	114600 (96.63)	4000 (3.37)
2008-09	217030	108750 (100)	114750 (96.63)	4000 (3.37)
CGR	26.19	34.08	36.96	32.14
5) Pisatri				
2000-01	46387	3434 (100)	3434 (100)	--
2001-02	33753	5164 (100)	4714 (91.29)	450 (8.71)
2002-03	20452	5295 (100)	5295 (100)	--
2003-04	70240	46800 (100)	45600 (97.44)	1200 (2.56)
2004-05	111540	48600 (100)	47100 (96.91)	1500 (3.09)
2005-06	115740	53600 (100)	51600 (96.27)	2000 (3.73)
2006-07	114949	11305 (100)	9305 (82.31)	2000 (17.69)
2007-08	173400	20500 (100)	16500 (80.49)	4000 (19.51)
2008-09	200400	24500 (100)	19500 (79.59)	5000 (20.41)
CGR	27.79	25.54	22.05	42.51

Year	Total Expenditure	Rural Development Expenditure	Social Expenditure	Economics Expenditure
6) Salwadi				
2000-01	77600	2800 (100)	2500 (89.29)	300 (10.71)
2001-02	59900	10000 (100)	9000 (90.00)	1000 (10.00)
2002-03	26273	6161 (100)	6161 (100)	--
2003-04	129492	45682 (100)	5582 (12.22)	40100 (87.78)
2004-05	79550	52000 (100)	51000 (98.08)	1000 (1.92)
2005-06	109900	51000 (100)	50000 (98.04)	1000 (1.96)
2006-07	214700	51000 (100)	50000 (98.04)	1000 (1.96)
2007-08	533300	76000 (100)	55000 (72.37)	2000 (27.63)
2008-09	603000	80000 (100)	55000 (68.75)	25000 (31.25)
CGR	36.79	48.73	49.61	51.88

Source : Official Records of Village Panchayats

Note : 1) Figures in round () brackets shows percentages to Rural Development Expenditure.



1. Kodoli Village Panchayat

The Village Panchayat of Kodoli has increased its expenditure on social services during the study period from Rs. 583000 (73.99%) in 2001-02 to Rs. 1495000 (82.14%) in 2008-09. An average of expenditure on social services was Rs. 1246312.50. The growth rate of expenditure on social services was 13.33% per annum. As well as expenditure on economic services was also increased from Rs. 205000 (26.01%) in 2001-02 to Rs. 325000 (17.86%) in 2008-09. An average of expenditure on economic services was higher than expenditure on social services. It was Rs. 311250. Expenditure on social services increased by 0.67% during the study period.

A technique of standard deviation (SD) reveals that expenditure on rural development (SD = 393140.78) registered greater variations. Expenditure on rural development to total expenditure showed a positive and high degree relationship with total expenditure ($r = 0.92$). However, expenditure on economic services of Kodoli Village Panchayat indicated low degree and negative association with expenditure on rural development ($r = - 0.12$). Expenditure on social services indicated positive and high degree relationship with expenditure on rural development ($r = 0.97$).

The foregoing analysis reveals that Kodoli Village Panchayat in Panhala tehsil of Kolhapur district has paid considerable attention towards rural development in its total fiscal operations. But instead of economic development, it has given priority to social development in the area under its jurisdiction based on relative share as well as growth rate.

2. Wadi Ratnagiri Village Panchayat

In the case of Wadi Ratnagiri Village Panchayat expenditure on social services increased from Rs. 4500 (100%) in 2000-01 to Rs. 1390000 (43.57%) in 2008-09. An average of expenditure on social services was Rs. 416872. The growth rate of this item was

very high. It was 68.27%. As well as the expenditure on economic services increased from Rs. 42500 (45.11%) in 2001-02 to Rs. 180000 (56.43%) in 2008-09. An average of this item was Rs. 343961.22. It increased by 47.12% per annum.

For the Wadi Ratnagiri Village Panchayat expenditure on rural development had a greater variations (SD = 1027889.52) than others. The correlation analysis indicated that expenditure on social services had a high degree and positive relationship with expenditure on rural development ($r = 0.98$). As well as expenditure on economic services had also a positive and high degree association with expenditure on rural development ($r = 0.99$). Regression analysis revealed that economic services (Std Beta . 60) have influenced its expenditure on rural development.

In the case of Wadi Ratnagiri Village Panchayat it is good thing that this Panchayat has given considerable but not a significant attention towards the rural development. In the rural development this Village Panchayat also has given priority treatment to social development than economic development, which has a special significance.

3. Panore Village Panchayat

For Panore Village Panchayat the data reveals that expenditure on social services increased from Rs. 14869 (100%) in 2000-01 to Rs. 101700 (64.08%) in 2008-09. An average of expenditure on social services was Rs. 75906.33. It increased by 19.13% during the study period. As well as expenditure on economic services was Rs. 1880 (3.07%) in 2001-02. It was Rs. 57000 (35.91%) in the year 2008-09. The growth rate of this item was very high. It was 58.67%. An average of expenditure on economic services was Rs. 113705.66.

For the Panore Village Panchayat its total expenditure had greater variations (SD = 218263.27). The correlation analysis indicated that expenditure on rural development had positive and high degree relationship with total expenditure ($r = 0.98$). As well as expenditure on social services had a positive and significant relationship with expenditure on rural development ($r = 0.71$). There was a positive and high degree correlation between expenditure on economic services and expenditure on rural development ($r = 0.98$). Regression analysis revealed that economic services development was mainly attempted (Std Beta 0.86) by this Village Panchayat.

Panore Village Panchayat has given an important place for rural development in its fiscal operations during the period under our consideration. Its relative share analysis indicates the same treatment has been given to both the social as well as economic development under rural development. However, the striking feature is that recently its attention towards economic development has been increased.

4. Kolik Village Panchayat

In the case of Kolik Village Panchayat expenditure on social services increased from Rs. 16817 (97.39%) in 2000-01 to Rs. 114750 (96.63%) in 2008-09. An average of expenditure on social services was Rs. 36520.66. It increased by 36.96 per annum during the period under study. As well as the expenditure on economic services was Rs. 450 (2.61%) in 2000-01 which rose to Rs. 4000 (3.37%) in 2008-09. It was increased by 32.14% per annum during the study period. An average of expenditure on economic services was Rs. 54016.66.

For the Kolik Village Panchayat its expenditure on economic services had greater variations than expenditure on social services (SD = 37652.10). The correlation analysis indicated that expenditure on rural development had a high degree and positive relationship with total expenditure ($r = 0.99$). The expenditure on social services had positive association with expenditure on rural development. As well as

the expenditure on economic services had positive and high degree association with expenditure on rural development ($r = 0.99$).

Its regression analysis reveals this Village Panchayat has mainly attempted to develop economic services (Std. Beta 0.90) than social services to achieve its rural development.

It is observed that Kolik Village Panchayat was more conscious in achieving rural development through its fiscal operations during the period into consideration. Because it has allotted about 50% share for its rural development. However, in rural development social development was first on its agenda, which is necessary for social welfare maximization.

5. Pisatri Village Panchayat

For the Pisatri Village Panchayat its expenditure on social services increased from Rs. 3434 (100%) in 2000-01 to Rs. 19500 (79.59%) in the year 2008-09. It increased by 22.05% per annum. As well as the expenditure on economic services was Rs. 450 (8.71%) in 2001-02. It was Rs. 5000 (20.41%) in the year 2008-09. It increased by 42.51%.

For the Pisatri Village Panchayat its expenditure on rural development had greater variations ($SD = 20314.15$) than other. The correlation analysis indicated that expenditure on rural development had low degree and positive relationship with total expenditure ($r = 0.07$). The expenditure on social services had a positive but low degree ($r = 0.38$) correlation with expenditure on rural development. In addition, expenditure on economic services had a positive and high degree correlation with expenditure on rural development ($r = 0.96$).

Regression analysis indicated that economic services was a prominent determinant (Std Beta 0.93) of rural development of this Village Panchayat. Pisatri Village Panchayat has not given much importance to the rural development of the area under its jurisdiction. However, it was firm in speeding up social development for rural development.

6. Salwadi Village Panchayat

In the case of Salwadi Village Panchayat expenditure on social services increased from Rs. 2500 (89.29%) in the year 2000-01 to Rs. 55000 (68.75%) in 2008-09. An average of expenditure on social services was Rs. 11027. It increased by 49.61% during study period. As well as the expenditure on economic services was Rs. 300 (10.71%) in 2000-01 that rose to Rs. 25000 (31.25) in the year 2008-09. It was increased by 51.88% during the study period. An average of expenditure on economic services was Rs.,. 30600.

For the Salwadi Village Panchayat its total expenditure had greater variations (SD = 213885.51) than expenditure on rural development. The correlation analysis indicated that the expenditure on rural development had a positive and high degree relationship with total expenditure ($r = 0.99$). The expenditure on social services had positive and significant correlation with expenditure on rural development ($r = 0.71$). In addition, the expenditure on economic services had a high degree and positive relationship with expenditure on rural development ($r = 0.99$).

A technique of regression showed that Salwadi Village Panchayat has given priority to develop economic services (Std. Beta 0.80) than social services during the period under study.

Salwadi Village Panchayat has increased its expenditure significantly for rural development as well as social and economic development. However, it relative analysis shows that social development was more important than economic development for it.

5.7 Rural Development by Village Panchayats : A Breakup

Rural development is divided into two parts. It is social services and economic services. In the social services, there are a few items or services like water supply, education, health and sanitation, street lighting, welfare of backward classes people and welfare of women etc. In addition, agriculture, transports and forestry are sub items of economic services.

Table No. 5.2
Rural Development by Village Panchayats : A Breakup

Year	Rural Expenditure	Social Services							Economic Services					
		Water	Education	Health and Sanitation	Street Lighting	Welfare of Backward Class People	Welfare of Women	Social Services	Agriculture	Transports	forestry	Economic Services		
1) Kodoli	--	--	--	--	--	--	--	--	--	--	--	--	--	--
2000-01	--	--	--	--	--	--	--	--	--	--	--	--	--	--
2001-02	788000	50000 (8.58)	70000 (12.01)	42000 (7.20)	100000 (17.15)	150000 (25.73)	171000 (29.33)	583000 (100)	--	200000 (97.56)	5000 (2.44)	205000 (100)	--	--
2002-03	1450000	--	70000 (7.57)	75000 (8.10)	150000 (16.22)	375000 (40.54)	255000 (27.57)	925000 (100)	--	500000 (95.24)	25000 (4.76)	525000 (100)	--	--
2003-04	1220000	--	70000 (7.69)	40000 (4.40)	150000 (16.48)	450000 (49.45)	200000 (21.98)	910000 (100)	--	300000 (96.77)	10000 (3.23)	310000 (100)	--	--
2004-05	1637500	100000 (7.21)	10000 (0.72)	402500 (29.01)	175000 (12.61)	500000 (36.04)	200000 (14.41)	1387500 (100)	--	200000 (80.00)	50000 (20.00)	250000 (100)	--	--
2005-06	1925000	100000 (6.06)	15000 (0.91)	560000 (33.94)	275000 (16.67)	500000 (30.30)	20000 (12.12)	1650000 (100)	--	200000 (72.73)	75000 (27.27)	275000 (100)	--	--
2006-07	1925000	100000 (6.06)	15000 (0.91)	560000 (33.94)	275000 (16.67)	500000 (30.30)	200000 (12.12)	1650000 (100)	--	200000 (72.73)	75000 (27.27)	275000 (100)	--	--
2007-08	1695000	100000 (7.30)	20000 (1.46)	625000 (45.62)	75000 (5.47)	350000 (25.55)	20000 (14.60)	1370000 (100)	--	250000 (76.92)	75000 (23.08)	325000 (100)	--	--
2008-09	1820000	--	20000 (1.34)	575000 (38.46)	350000 (23.41)	350000 (23.41)	200000 (13.38)	1495000 (100)	--	250000 (76.92)	75000 (23.08)	325000 (100)	--	--
CGR	10.21	14.86	- 20.47	55.65	9.43	7.27	- 0.14	13.33	--	- 3.64	44.46	0.67	--	--

Year	Rural Expenditure	Social Services										Economic Services					
		Water	Education	Health and Sanitation	Street Lighting	Welfare of Backward Class People	Welfare of Women	Social Services	Agriculture	Transports	forestry	Economic Services					
2) Wadi Ratnagiri																	
2000-01	4500	2500 (55.56)	--	2000 (44.44)	--	--	--	4500 (100)	--	--	--	--	--	--	--	--	--
2001-02	94221	25888 (50.05)	--	10363 (20.04)	15470 (29.91)	--	--	51721 (100)	20500 (48.23)	20000 (47.06)	2000 (4.71)	42500 (100)					
2002-03	209282	131094 (66.16)	--	46990 (23.72)	20047 (10.12)	--	--	198131 (100)	--	11151 (100)	--	11151 (100)					
2003-04	389700	--	20000 (6.51)	155000 (50.70)	90700 (29.67)	--	--	305700 (100)	40000 (42.62)	40000 (47.62)	4000 (4.76)	84000 (100)					
2004-05	449000	--	2000 (6.35)	115000 (36.51)	110000 (34.92)	40000 (12.70)	40000 (9.52)	315000 (100)	40000 (29.85)	90000 (67.16)	4000 (2.99)	134000 (100)					
2005-06	1623000	400000 (55.94)	2000 (2.80)	115000 (16.08)	110000 (15.39)	40000 (5.59)	3000 (4.20)	715000 (100)	4000 (0.44)	900000 (99.12)	4000 (0.44)	908000 (100)					
2006-07	283000	--	2000 (7.27)	75000 (27.27)	100000 (36.36)	40000 (14.55)	40000 (14.55)	275000 (100)	4000 (50.00)	--	4000 (50.00)	8000 (100)					
2007-08	1509297	--	3000 (5.99)	37000 (7.38)	15000 (29.92)	250000 (49.87)	34297 (6.84)	501297 (100)	--	1000000 (99.21)	8000 (0.79)	1008000 (100)					
2008-09	3190000	800000 (57.55)	5000 (0.36)	90000 (6.47)	200000 (14.39)	250000 (17.99)	45000 (3.24)	1390000 (100)	--	1800000 (100)	--	1800000 (100)					
CGR	75.83	--	- 15.06	38.82	40.01	73.28	3.71	68.27	- 42.71	149.54	21.90	47.12					

Year	Rural Expenditure	Social Services								Economic Services							
		Water	Education	Health and Sanitation	Street Lighting	Welfare of Backward Class People	Welfare of Women	Social Services	Agriculture	Transports	forestry	Economic Services					
3) Panore																	
2000-01	14869	--	1535 (10.32)	490 (3.29)	8346 (56.13)	4003 (26.92)	495 (3.33)	14869 (100)	--	--	--	--	--	--	--	--	--
2001-02	61305	34950 (58.81)	295 (0.50)	944 (1.59)	6613 (11.12)	12405 (20.88)	4218 (7.10)	59425 (100)	--	1880 (100)	--	--	1880 (100)	--	--	1880 (100)	--
2002-03	61253	17805 (32.20)	670 (1.21)	3130 (5.62)	14510 (26.24)	15310 (27.68)	3898 (7.05)	55303 (88.14)	--	5950 (100)	--	--	5950 (100)	--	--	5950 (100)	--
2003-04	233000	3000 (13.27)	1000 (0.44)	6000 (2.65)	15000 (6.64)	165000 (73.02)	9000 (3.98)	226000 (100)	--	7000 (100)	--	--	7000 (100)	--	--	7000 (100)	--
2004-05	247000	30000 (12.55)	1000 (0.42)	13000 (5.44)	20000 (8.37)	168000 (70.29)	7000 (2.93)	239000 (100)	--	8000 (100)	--	--	8000 (100)	--	--	8000 (100)	--
2005-06	300000	35000 (11.99)	2000 (0.69)	8000 (2.74)	2000 (6.85)	220000 (75.34)	7000 (2.40)	292000 (100)	--	8000 (100)	--	--	8000 (100)	--	--	8000 (100)	--
2006-07	446761	33900 (17.62)	--	5655 (2.94)	22900 (11.90)	123800 (64.36)	6100 (3.17)	192355 (100)	--	7900 (3.11)	246506 (96.89)	--	446761 (100)	--	--	446761 (100)	--
2007-08	183600	40000 (22.78)	1500 (0.8)	11500 (6.55)	20000 (11.39)	95600 (54.44)	7000 (3.99)	175600 (100)	--	8000 (100)	--	--	8000 (100)	--	--	8000 (100)	--
2008-09	158700	40000 (26.37)	1500 (0.99)	11200 (7.38)	22000 (14.51)	70000 (46.14)	7000 (4.61)	151700 (100)	--	7000 (100)	--	--	7000 (100)	--	--	7000 (100)	--
CGR	32.72	6.78	14.33	43.09	15.02	44.38	23.69	19.31	--	14.05	--	--	58.67	--	--	58.67	--

Year	Rural Expenditure	Social Services								Economic Services					
		Water	Education	Health and Sanitation	Street Lighting	Welfare of Backward Class People	Welfare of Women	Social Services	Agriculture	Transports	forestry	Economic Services			
4) Kolik															
2000-01	17267	8278 (49.22)	505 (3.00)	--	3084 (18.34)	4010 (23.85)	940 (5.59)	16817 (100)	--	450 (100)	--	450 (100)			
2001-02	9056	--	120 (1.47)	62 (0.76)	1600 (19.62)	3599 (44.13)	2775 (34.02)	8156 (100)	--	900 (100)	--	900 (100)			
2002-03	41363	--	--	3425 (8.69)	1188 (2.93)	34550 (85.18)	1300 (3.20)	40563 (100)	500 (62.5)	300 (37.5)	--	800 (100)			
2003-04	53100	--	500 (0.98)	100 (0.19)	5000 (9.79)	42500 (83.17)	3000 (5.87)	51100 (100)	--	2000 (100)	--	2000 (100)			
2004-05	85100	--	1000 (1.20)	3100 (3.73)	6500 (7.82)	69500 (83.64)	3000 (3.61)	83100 (100)	--	2000 (100)	--	2000 (100)			
2005-06	87600	--	1000 (1.16)	2100 (2.44)	10500 (12.19)	69500 (80.73)	3000 (3.48)	86100 (100)	500 (14.29)	3000 (85.71)	--	3500 (100)			
2006-07	112100	--	1000 (0.93)	2600 (2.39)	11500 (10.59)	90500 (83.33)	3000 (2.76)	108600 (100)	500 (14.29)	3000 (85.71)	--	3500 (100)			
2007-08	118600	--	1000 (0.87)	3100 (2.71)	12000 (10.47)	95000 (82.90)	3500 (3.05)	114600 (100)	500 (12.5)	3500 (87.5)	--	4000 (100)			
2008-09	108750	--	200 (0.19)	3100 (2.96)	7000 (6.68)	90950 (86.83)	3500 (3.34)	104750 (100)	500 (12.5)	3500 (87.50)	--	4000 (100)			
CGR	34.08	--	7.65	53.73	27.56	50.99	13.55	36.96	--	32.14	--	32.14			

Year	Rural Expenditure	Social Services										Economic Services								
		Water	Education	Health and Sanitation	Street Lighting	Welfare of Backward Class People	Welfare of Women	Social Services	Agriculture	Transports	forestry	Economic Services								
5) Pisatri																				
2000-01	3434	--	120 (3.50)	--	1614 (47.0)	1300 (37.85)	400 (11.65)	3434 (100)	--	--	--	--	--	--	--	--	--	--	--	--
2001-02	5164	300 (6.36)	--	400 (8.49)	564 (11.96)	3000 (63.64)	450 (9.55)	4714 (100)	--	450 (100)	--	--	--	--	--	--	--	450 (100)	--	--
2002-03	5295	--	--	2565 (48.44)	690 (13.03)	2040 (38.53)	--	5295 (100)	--	--	--	--	--	--	--	--	--	--	--	--
2003-04	46800	--	500 (1.10)	100 (0.22)	2500 (5.48)	40500 (88.81)	2000 (4.39)	45600 (100)	--	1200 (100)	--	--	--	--	--	--	--	1200 (100)	--	--
2004-05	48600	--	500 (1.06)	1600 (3.40)	2500 (5.30)	40500 (85.99)	2000 (4.25)	47100 (100)	--	1500 (100)	--	--	--	--	--	--	--	1500 (100)	--	--
2005-06	53600	--	500 (0.97)	1600 (3.10)	7000 (13.56)	40500 (78.49)	2000 (3.88)	51600 (100)	--	2000 (100)	--	--	--	--	--	--	--	2000 (100)	--	--
2006-07	11305	--	--	2350 (25.26)	1955 (21.01)	3000 (32.24)	2000 (21.49)	9305 (100)	--	2000 (100)	--	--	--	--	--	--	--	2000 (100)	--	--
2007-08	20500	--	500 (3.03)	3500 (21.22)	7000 (42.42)	3000 (18.18)	2500 (15.15)	16500 (100)	--	4000 (100)	--	--	--	--	--	--	--	4000 (100)	--	--
2008-09	24500	--	1000 (5.13)	4000 (20.51)	9000 (46.15)	3000 (15.39)	2500 (12.82)	19500 (100)	--	5000 (100)	--	--	--	--	--	--	--	5000 (100)	--	--
CGR	42.51	--	35.37	38.14	33.96	7.1	29.01	22.05	--	42.51	--	--	--	--	--	--	--	42.51	--	--

Year	Rural Expenditure	Social Services							Economic Services						
		Water	Education	Health and Sanitation	Street Lighting	Welfare of Backward Class People	Welfare of Women	Social Services	Agriculture	Transports	forestry	Economic Services			
6) Salwadi															
2000-01	2800	--	200 (8.0)	300 (12.0)	2000 (80.0)	--	--	--	2500 (100)	--	300 (100)	--	300 (100)		
2001-02	10000	--	1000 (11.11)	1000 (11.11)	7000 (77.78)	--	--	--	9000 (100)	--	1000 (100)	--	1000 (100)		
2002-03	6161	--	--	2351 (38.16)	3110 (50.48)	--	--	700 (11.36)	6161 (100)	--	--	--	--		
2003-04	45682	--	110 (1.97)	772 (13.83)	4700 (84.20)	--	--	--	5582 (100)	--	39500 (98.50)	600 (1.50)	40100 (100)		
2004-05	52000	--	500 (0.98)	3500 (6.86)	9000 (17.65)	35000 (68.63)	3000 (5.88)	51000 (100)	51000 (100)	--	1000 (100)	--	1000 (100)		
2005-06	51000	--	500 (1.0)	3500 (7.0)	9000 (18.0)	35000 (70.0)	1000 (4.0)	50000 (100)	50000 (100)	--	1000 (100)	--	1000 (100)		
2006-07	51000	--	500 (1.0)	3500 (7.0)	9000 (18.0)	35000 (70.0)	2000 (4.0)	50000 (100)	50000 (100)	--	1000 (100)	--	1000 (100)		
2007-08	76000	--	500 (0.91)	3500 (6.36)	9000 (16.36)	40000 (72.73)	2000 (3.64)	55000 (100)	55000 (100)	--	1000 (4.76)	20000 (95.24)	21000 (100)		
2008-09	80000	--	--	5000 (9.09)	7000 (12.72)	40000 (72.73)	3000 (5.46)	55000 (100)	55000 (100)	--	--	25000 (100)	25000 (100)		
CGR	48.76	--	10.82	33.46	15.29	4.08	18.90	49.61	49.61	--	0.22	--	51.88		

Source : Official Records of Village Panchayats

Note : 1) Figures in round () brackets shows percentages to Social Services and Economic Services Expenditure.

1. Kodoli Village Panchayat

For the Kodoli Village Panchayat the expenditure on water was the most important item of social services. It was Rs. 50000 (8.58%) in 2001-02. It was Rs. 100000 (7.30%) in 2007-08. It increased by 14.85%. An average of this item was Rs. 9000. Education was another most important item of social services. It was Rs. 70000 (12.01%) in 2001-02, which fell to Rs. 20000 (1.34%) in 2008-09. It fell by – 20.47%. An average of this item was Rs. 36250. Expenditure on health and sanitation increased from Rs. 42000 (7.20%) in the year 2001-02 to Rs. 575000 (38.48%) in the year 2008-09. The growth rate of this item was 55.65%. An average of this expenditure was Rs. 359937.50. As well as the expenditure on street lighting increased from Rs. 100000 (17.15%) in 2001-02 to Rs. 350000 (23.91%) in 2008-09. It increased by 9.43% during the study period. An average of this item was Rs. 193750. In addition, the expenditure on welfare of backward classes people was Rs. 150000 (25.73%) in 2001-02. It was Rs. 35000 (23.41%) in 2008-09. It increased by 7.27%. The growth rate of welfare of women was – 0.14% during the study period.

Expenditure on transport increased from Rs. 200000 (97.56%) in 2001-02 to Rs. 250000 (76.92%) in 2008-09. It fell by – 3.64% during the study period. As well as expenditure on forestry increased from Rs. 5000 (2.44%) in 2001-02 to Rs. 75000 (23.08%) in 2008-09. It increased by 44.46% per annum.

The minute study of rural development of Kodoli Village Panchayat indicates that it has given importance to the welfare of Backward classes and women and children. However, it did not become possible to increase spending on them rapidly. Its attention towards water supply and sanitation was also considerable in social development attempts. In economic development the development of transport facilities was given more importance.

2. Wadi Ratnagiri Village Panchayat

Wadi Ratnagiri Village Panchayats expenditure on water supply was Rs. 2500 (55.56%) in 2000-01 that rose to Rs. 800000 (57.55%) in 2008-09. The expenditure on education was Rs. 20000 (66.59%) in 2003-04. It declined to Rs. 5000 (0.36%) in 2008-09. It fell by – 15.06% during the study period. Its expenditure on health and sanitation was increased from Rs. 2000 (44.44%) in 2000-01 to Rs. 155000 (55.70%) in 2003-04. Thereafter it declined during 2004-05. It was increased by 38.83% during the study. The expenditure on street lighting increased from Rs. 15470 (29.19%) in the year 2001-02 to Rs. 200000 (14.30%) in 2008-09. It increased by 40.01%. The expenditure on backward classes increased from 2004-05 to 2008-9. The growth rate of welfare of women was 3.71% per annum during the period under study.

Expenditure on agriculture was Rs. 20500 (48.23%) in 2001-02. It was Rs. 4000 (50%) in the year 2006-07. It fell by – 42.71%. The expenditure on transport increased from Rs. 20000 (47.06%) in 2001-02 to Rs. 1800000 (100%) in 2008-09. As well as expenditure on forestry increased from Rs. 2000 (4.71%) in 2001-02 to Rs. 8000 (0.79%) in 2007-08. It increased by 21.90% during the study period.

Wadi Ratnagiri Village Panchayats expenditure on social development as well as economic development has increased rapidly is an indicator of its due attention towards their development during the period into consideration. In social development, health and sanitation and street lighting was given grater significance. In economic development, it gave importance to supplying transport facilities in the area under its jurisdiction.

3. Panore Village Panchayat

For the Panore Village Panchayat the expenditure on water supply increased from Rs. 34950 (58.81%) in 2001-02 to Rs. 40000 (26.37%) in 2008-09. The growth rate of this expenditure was 6.78%.

There were ups and downs in expenditure on education during the study period. It increased by 14.33%. The expenditure on health and sanitation increased from Rs. 490 (3.29%) in 2000-01 to Rs. 112000 (7.38%) in 2008-09. The growth rate of this expenditure was 43.09%. As well as expenditure on street lighting was Rs. 8346 (56.13%) in 2000-01. It was Rs. 22000 (14.56%) in 2008-09. It increased by 15.02% during the study period. The expenditure on backward classes was Rs. 4003 (26.92%) in 2000-01. It was Rs. 7000 (46.14%) in 2008-09. It increased by 44.38% during the study period. Expenditure on welfare of women increased from Rs. 495 (3.33%) in 2000-01 to Rs. 7000 (4.61%) in 2008-09. It increased by 23.69%.

The expenditure on transport increased from Rs. 1880 (100%) in 2001-02 to Rs. 7000 (100%) in 2008-09. It increased by 14.05%.

Panore Village Panchayat was interested in social development than economic development in achieving its rural development. In social development this Panchayat gave more importance to the welfare of backward classes, women and children and water supply. To provide transport facilities was an item of economic development during the period into consideration.

4. Kolik Village Panchayat

Kolik Village Panchayats expenditure on education was Rs. 505 (3.03%) in 2000-01. It was Rs. 200 (0.19%) in 2008-09. The growth of this expenditure was by 7.65% during the study period. The expenditure on health and sanitation was only Rs. 62 (0.76%) in 2001-02. It was Rs. 3100 (2.96%) in 2008-09. It increased by 53.73%. As well as expenditure on street lighting was Rs. 3084 (18.34%) in 2000-01. It declined to Rs. 7000 (6.68%) in the year 2008-09. It increased by 27.56% during the study period. The expenditure on backward classes increased from Rs. 4010 (23.85%) in 2000-01 to Rs. 90950 (86.83%) in 2008-09. The growth rate of this expenditure was 50.99% during the study period.

The expenditure on women increased by 13.55% during the study period.

In the economic services, the expenditure on transport increased from Rs. 450 (100%) in the year 2000-01 to Rs. 3500 (87.50%) in 2008-09. The growth rate of this expenditure was 32.14% during the study period.

Kolik Village Panchayat has attempted significantly to speed up socio-economic development under rural development during the period into consideration. In the social development this Village Panchayat gave priority to the welfare of backward classes, women and children, street lighting. In economic services it gave importance to supply of transport facilities.

5. Pisatri Village Panchayat

The expenditure on health and sanitation was Rs. 400 (8.49%) in the year 2001-02. It was Rs. 4000 (20.51%) in 2008-09. It increased by 38.14% during the study period. As well as expenditure on street lighting increased from Rs. 1614 (47%) in 2000-01 to Rs. 9000 (46.15%) in the year 2008-09. It increased by 7.1%.

In the economic services, the expenditure on transport also increased from Rs. 450 (100%) to Rs. 5000 (100%) in 2008-09. It increased by 42.51%.

Pisatri Village Panchayat was rigorous in achieving social development than economic development as constituents of rural development like other Panchayat. This Panchayat also gave increased attention towards welfare of backward classes people, women, street lighting, health and sanitation in social development. Transport facilities was a single item of economic development.

6. Salwadi Village Panchayat

In the social services, expenditure on health and sanitation was Rs. 300 (12%) in 2001-02. It was Rs. 5000 (9.10%) in 2008-09. The growth rate of this item was 33.46% during 2000-01 to 2008-09. In addition, the expenditure on street lighting increased year by year. The expenditure on backward classes people increased from Rs. 35000 (68.63%) in 2004-05 to Rs. 40000 (72.73%) in the year 2008-09. It increased by 4.08% during the study period.

The expenditure on transport increased from Rs. 300 (100%) in 2000-01 to Rs. 39500(98.56%) in 2003-04. It declined to Rs. 1000 (4.76%) in 2007-08. It fell by – 0.22% during the study period.

Salwadi Village Panchayat has given significant consideration towards the development of social and economic services during the period under our study. However, social development was first on its agenda of rural development. In social development it gave importance to welfare of backward classes and women, street lighting and health and sanitation. More or less all Panchayats under study have neglected educational development. Provision of transport facilities was an item of economic development by this Village Panchayat.

Health and sanitation was the main item of social services of Kodoli Village Panchayat. Its expenditure on welfare of backward people had greater variations (SD = 396875.00) in the social services. The correlation analysis has identified water supply, education, health and sanitation, street lighting, welfare of backward people and welfare of women were important heads of social services of this Village Panchayat.

For Wadi Ratnagiri Village Panchayat, its water supply had greater variations (SD = 271896.40) in social services. A technique of correlation has revealed water supply, health and sanitation, street lighting were the important items of social services. Water supply, health and sanitation, street lighting, welfare of backward people

welfare of women had positive relationship with social services. However, education had negative correlation relationship with social services ($r = 0.75$). Agriculture had negative correlation with economic services.

In the case of Panore Village Panchayat, its expenditure on welfare of backward people had greater variations ($SD = 2072.22$) in the economic services. According to correlation analysis education, health and sanitation, street lighting, welfare of backward classes, welfare of women have shown positive and high degree relationship with expenditure on social services.

For the Kolik Village Panchayat its expenditure on welfare of backward people had greater variations ($SD = 55567.66$) in social services. Transport had greater variations ($SD = 2072.22$) in economic services. According to correlation analysis education, health and sanitation, street lighting, welfare of backward people, welfare of women have shown positive and high degree relationship with expenditure on social services.

For the Pisatri Village Panchayat its expenditure on backward people had greater variations ($SD = 15204.44$) in social services. The forestry had greater variations ($SD = 2307$) in economic services. According to correlation analysis, education, street lighting, welfare of backward people, welfare of women had registered positive and high degree association with social services. However, health and sanitation had a negative relationship with social services ($r = - 0.34$).

In the case of Salwadi Village Panchayat's expenditure on backward people had greater variations ($SD = 40000$) in social services. In addition, the forestry had greater variations ($SD = 11400$) in economic services. The correlation analysis indicated that all items of social services had positive relationship with social services.

5.8 Concluding Remarks

Rural development is very complex subject to handle because of its range of contents and its dimensions. However, it brings in social consciousness. It is identified as a revolution of some type. It is a liberating force. Its main purpose is restructuring and modernization of the traditional society and the rural setting should consciously begin. Just as the concept of total revolution envisages peaceful transformation in all spheres of life, the programme of rural development must cover all aspects of rural life.

The present chapter reveals that rural development is an item on each and every Village Panchayats development agenda. However, its extent differs from Panchayat to Panchayat. More importantly every Village Panchayat has attempted to speed up social development than economic development as constituents of rural development.

5.9 References

1. Sharma, Suresh K. (2007a), Rural Development in India, Vista International Publishing House, New Delhi, p. 14
2. Mathur, B. L. (2000), Rural Development and Co-operation, RBSA Publishers, Jaipur, p. 4
3. Robert Chambers (1983), Rural Development Putting the last first (London, Longman), p. 25
4. Singh Katar (1986), Rural Development, Principles, Policies and Management, Sage Publications, New Delhi, pp. 18-19
5. Demond Anker K. W. (1973), Rural Development Problems and Strategies, International Labour Review, p. 108
6. Lele Uma (1973), Design of Rural Development : Lessons from America, The Johha Hopkins University Press, London, p. 2
7. Udai Pareek (1982), Education and Rural Development in Asia, Oxford and IBH Publishing, New Delhi, pp. 4-5

8. Parthasarathy (1981), Interacted Rural Development Concept Theoretical Base and Contradictions, in Rural Development in India (Ed.) T. Mathurs Agricol Publishing Academy, New Delhi, p. 25
9. Michael P. Todaro (1977), Economics for Developing World, Longmans Group Ltd., London, p. 249
10. Reddy, K. Venkata (1988), Rural Development in India, Himalaya Publishing House, Nagpur, p. 40.