

PHOTOPLATES

Plate- VII

Fig -13. *Rhizopus nigricans*

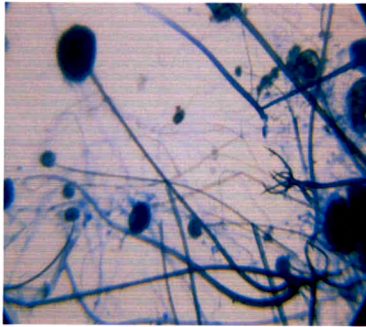


Fig-14. *Rhizopus nodosus*

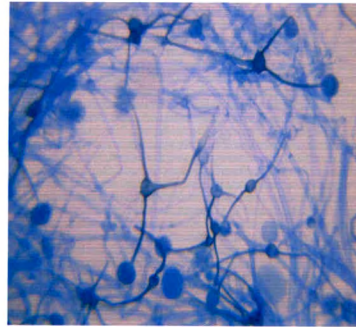


Fig. 15. *Aspergillus fumigatus*



Fig. 16. *Aspergillus candidus*

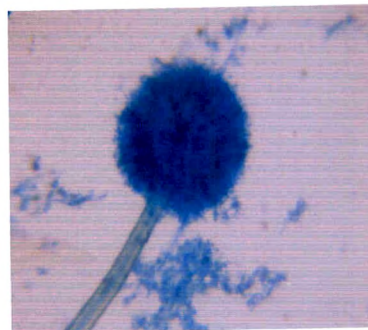


Fig. 17. *Aspergillus clavatus*

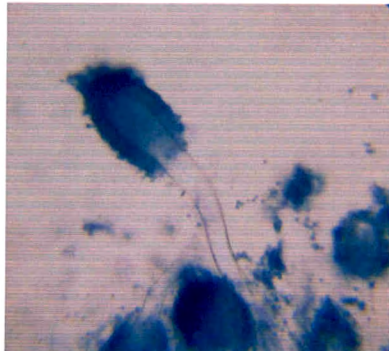


Fig. 18. *Aspergillus terreus*

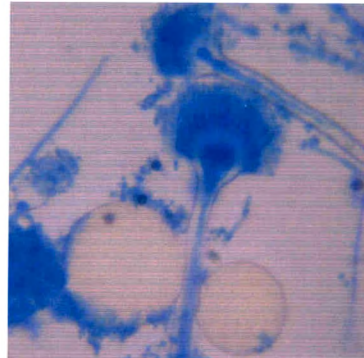


Plate - VIII

Fig. 19. *Aspergillus niger*

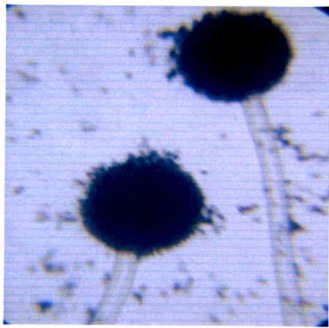


Fig. 20. *Aspergillus flavus*

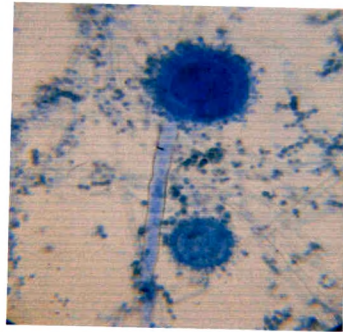


Fig. 21. *Penicillium rugulosum*

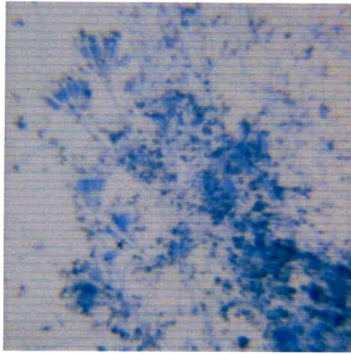


Fig.22. *Cunninghamella verticillata*

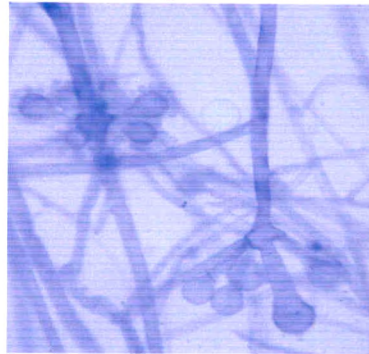


Fig. 23 . *Trichoderma lignorum*

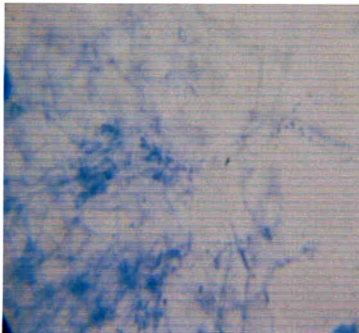


Fig. 24. *Trichoderma viride*

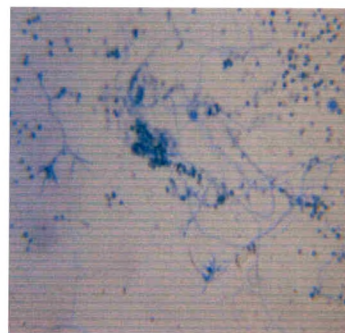


Plate- IX

Fig . 25. *Memnoniella echinata*

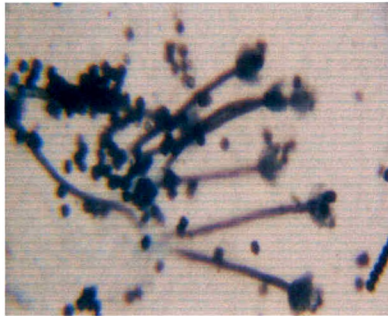
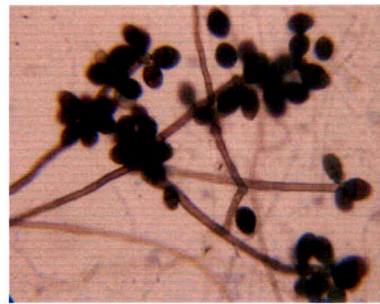
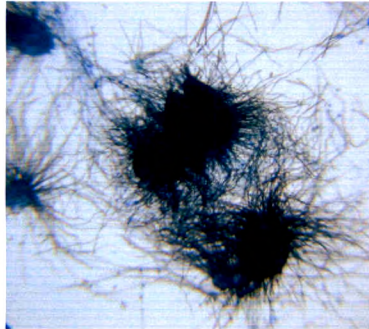


Fig. 26. *Brachysporium nigrum*



**Fig.27. *Chaetomium olivaceum*
(Perithecia)**



**Fig. 28. *Chaetomium olivaceum*
(spores)**

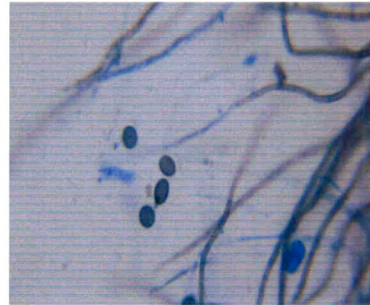
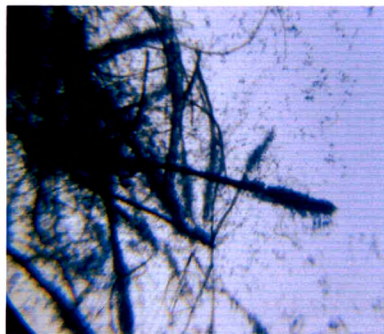


Fig - 29 *Trichurus spiralis*



**Fig. 30. *Trichurus spiralis*
(Head with steriform apices).**

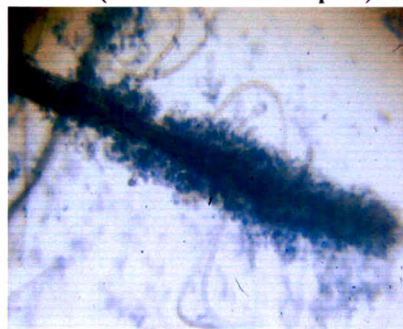


Plate- X

Fig. 31. *Stachybotrys chartarum*

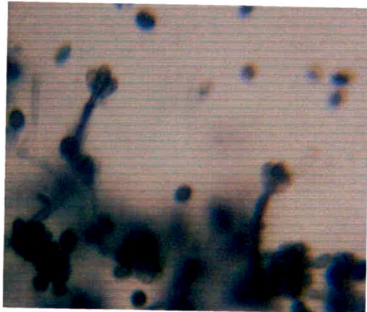


Fig. 32. *Bipolaris spicifera*



Fig. 33. *Alternaria palandui*

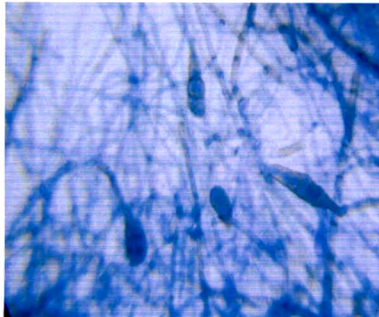


Fig. 34. *Curvularia inaequalis*

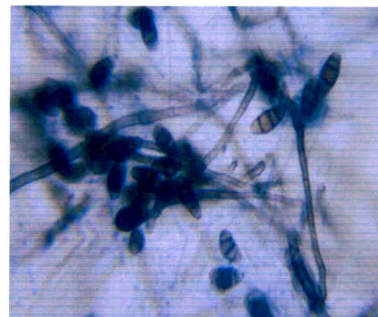


Fig. 35. *Scytalidium thermophilum*

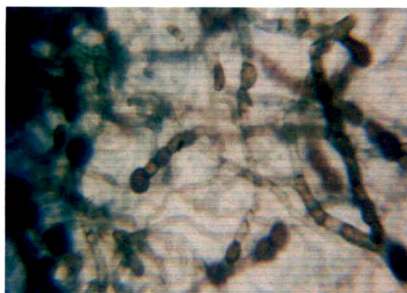


Fig. 36. *Fusarium chlamydosporum*

