

Chapter – I

**SAGARESHWARE SAHAKARI
SUT GIRNI LTD. KADEGAON.
DIST- SANGLI.**

CHAPTER - 1

SAGARESHWAR SAHAKARI SUT GIRNI LTD. KADEGAON DIST- SANGLI

1.1 Introduction :-

SAGARESHWAR SAHAKARI SUT GIRNI LTD. KADEGAON .

This chapter presents information about Sagareshwar Sahakari Sut Girni Ltd. Kadegaon. It is the Sut Girni which has been selected for the study. The research topic of study is, "Industrial workers and their Relation." This Sut Girni situated at Kadegaon Dist- Sangli.

Maharashtra is one of the leading industrial states in co-operative sector. In Sangli district the Kadegaon industrial estate has 20 industries based in the co-operative sector. The textile industry plays a vital role in the social and economic development of India. Textile goods contribute around 35% of the total export of our country. It has played significant role in generating employment. The co-operative sector is considered as the supporting factor to increase textile export in our country. This sector acts as the golden mean between socialism and capitalism i.e. private and public sector. It gives equal importance to capital and worker. The government has accepted a new socialism and economic policy in the year 1991 and it has given stress on the liberalization and globalization. Under the new economic policy some fundamental changes in trade and commerce have been made.

The present policy to promote free trade in India is gaining importance's. Co-operative movement has been largely responsible for the overall development especially in western Maharashtra. The idea was to achieve instant success with the establishment of the Decan spinning co-operative mill. i.e. the first co-operative spinning mill of our country.

This success gave encouragement for installing many more spinning mills including Navamaharashtra, the first 100% Export Oriented Unit (EOU) in the co-operative sector. Many more co-operative organizations are started and flourished under the strong leadership of Dr. Patangrao Kadam. The spinning mill, 'Sagareswar Sahakari Sut Girni Ltd. Kadegaon', is one of the flourished establishments made by Dr. Patangrao Kadam.

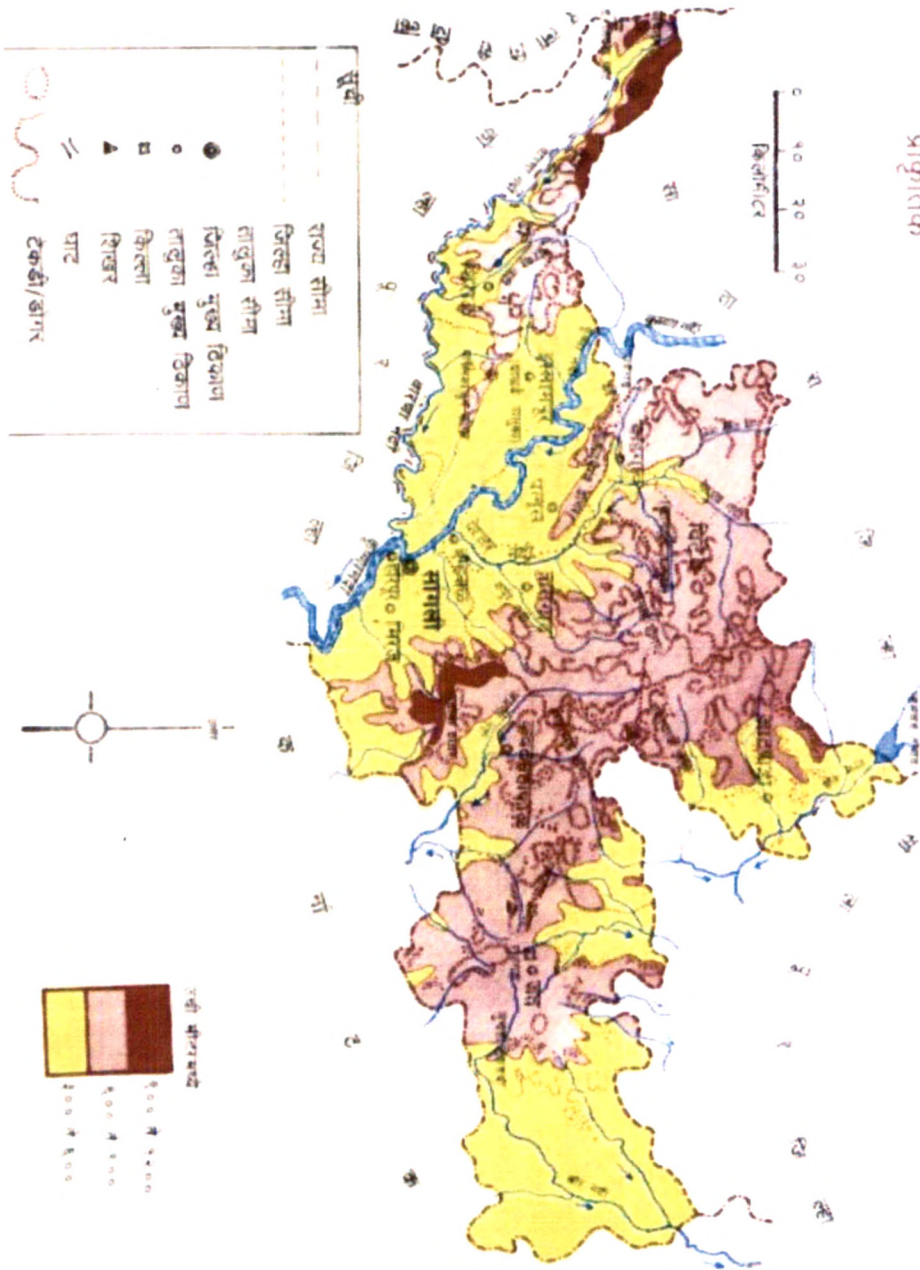
The distant feature of this project is that all share holders, Board of Directors and most of workers are from local area. This mill was registered on 18th Dec. 1990 and the mill was started its functioning on 28th Feb. 1991. At present Mr. A. B. Madne is the chairperson of this mill. This mill is one of the co-operative industry running successfully from last 16 years in rural area. This mill has recently awarded by "Maharashtra State Sahakari Wastrodyog Mahasangh" for its good management and also awarded by the "All Indian Spinning Mills Federation Ltd., Mumbai". due to its newness.

The initial project was of 21,168 spindles having capital outlay of Rs 48.22 Crores and it was started with the financial assistance of Sangli Zillaha Madhyavarti Sahakari Bank Ltd., Sangli and Bharati Sahakari Bank Ltd. Pune.

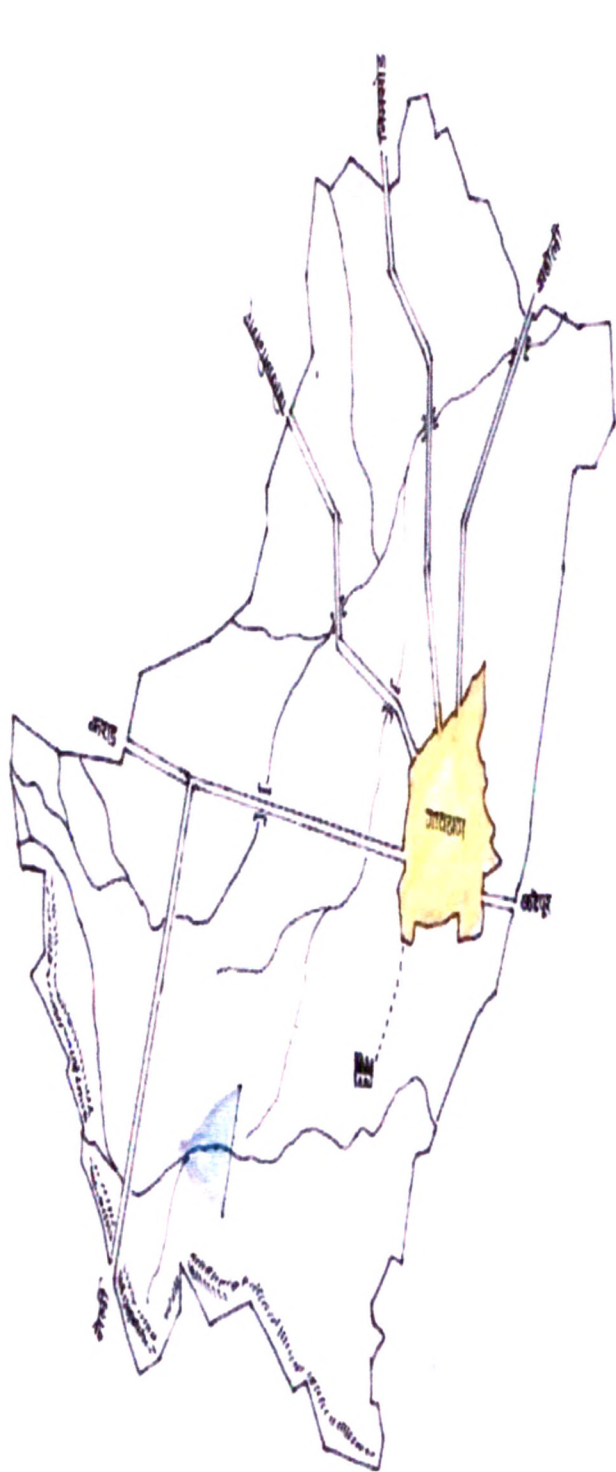
The share holders collected share capital more than Rs. 10, 25,254 and government contributed Rs, 18 crores 90 lacs this support helped the management to implement the project in right earnest. The mill is having the land admeasuring 30 acres in the Kadegaon away from 20 km. from Karad. The full fledged work of 21.168 spindles commenced in the year 2006 the textile machinery equipped with latest technology was procured from Ustar Company while implementing the project, necessary changes in technology and international market trends were considered.

सांगली जिल्हा

प्राकृतिक



MAP OF SANGLI DISTRICT



૧:૨૫૦૦૦
 મોજે-કડેગાંવ
 સરકારી બંધો

ક્ર. નં.	વર્ણન	ચિહ્ન
૧)	ઝાવણી	
૨)	નુલ ચિરકા	
૩)	સ્ત્રા	
૪)	પુલ	
૫)	બંધ	
૬)	તીર્થ	
૭)	રોડ	

મોજે-કડેગાંવ

LOCATION MAP OF SUT GIRANI

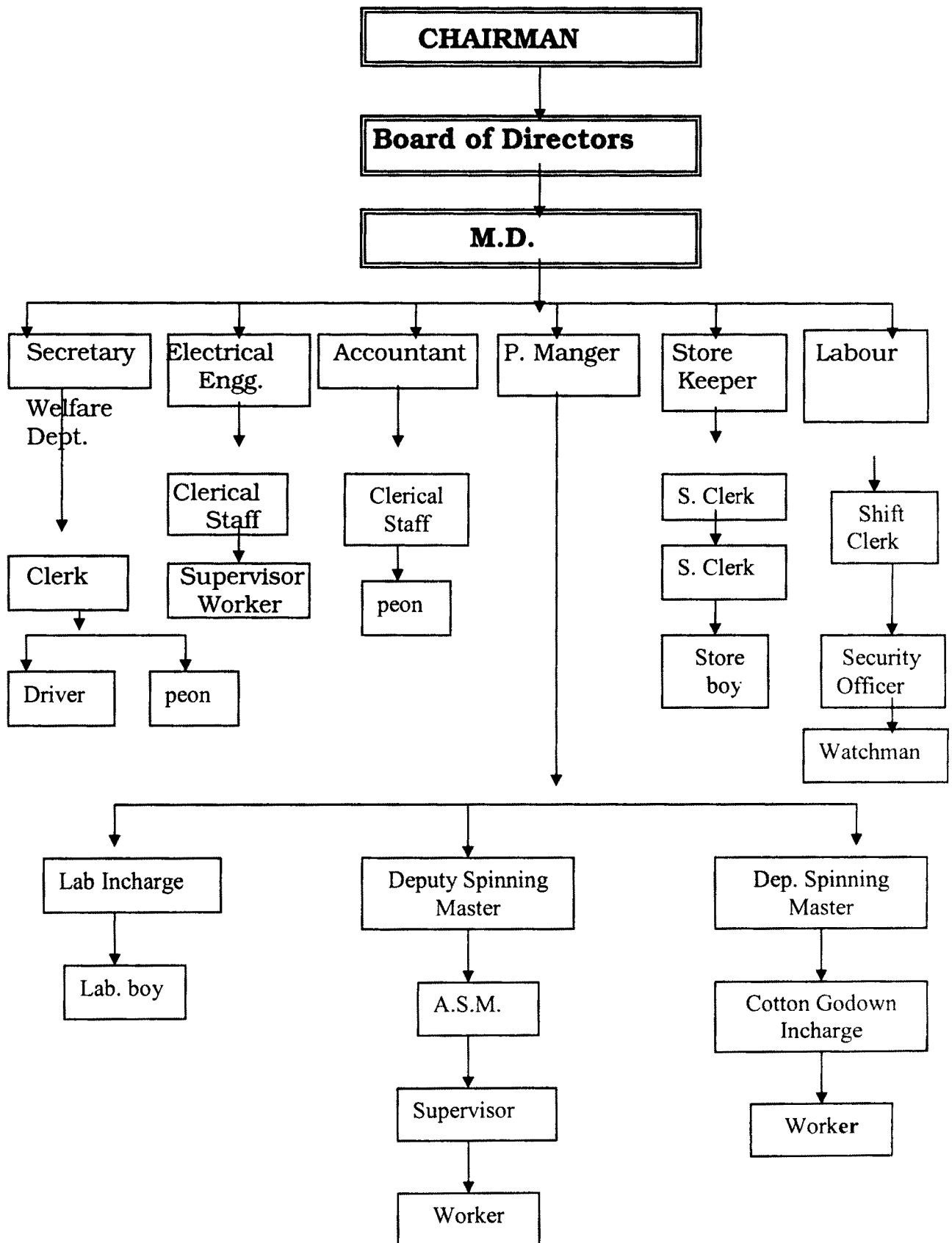
BOARD OF DIRECTORS:-

The board of directors looks after all the administration as well as production and development of the Sut Girni.

The board of directors in the year 2006-07 is as under.

Adv. A. B. Madane	-	Chairman
T. K. Karande	-	Vice-Chairman
V.P. Kadam	-	Director
B. M. Mohité	-	Director
G. K. Patil	-	Director
S. R, Thorat	-	Director
A. P. Nalawde	-	Director
D. K. Kadam	-	Director
Dr.V. M. Salunkhe	-	Director
Adv. N. B. Patil	-	Director
S. M. Mohite	-	Director
S. S. Jadhav	-	Director
N. D. Patil	-	Director
P. J. Kamble	-	Director
B. B.Yadav	-	Director
Smt. S. U. Pawar	-	Director
Smt. A. N. Mane	-	Director
S. P. Yadav	-	Bank Representative
S. P. Jare	-	Govt. Representative
A. B. Chalukya	-	Managing Director

1.3 ORGANIZATION STRUCTURE



SAGARESHWAR SAHAKARI SUT GIRNI LTD., KADEGAON DIST. SANGLI



WEL-COME TO SUT GIRNI



SUT GIRNI OFFICE



IN 2005-06 Sut Girni was awarded for innovative work by “ The All India Federation of Co-operative Spinning Mills Ltd., Mumbai”



In 2006-07 Sut Girni was awarded for its highest net profit by “ The All India Federation of Co-operative Spinning



**In 2003-04 Sut Girni was awarded for its best manement by
“Maharashtra State Sahakari wastrodyog Mahasangh”**



**In 2004-05 Sut Girni was awarded its best manegment by
“Maharashtra State Sahakari wastrodyog Mahasangh”**



ADMINISTRATION OFFICERS

1. Shri. D.E. Pawar (Chief Accountant)
2. Shri. S.B. Patel (Cheshier)
3. Shri. U.M. Kadam (Head, Sut Sales Department)
4. Shri. R. U. More (Head, Gerden Department.)

1.5 TECHNICAL OFFICERS

1. Shri. S.G. Nashte, (Dy. Spinning Master)
2. Shri. S.U. Ligade (Labour Officer)
3. Shri. S.A. Gaikwad (Storekeeper)
4. Shri. R.S. Miraje (Laboratory Incharge)
5. Shri. I. G. Suryavanshi (Head, Cotton Department)

1.6 INTRODUCTION OF THE ORGANIZATION

FACTORY NAME	:	SAGARESHWAR SAHAKARI SUT- GIRNI LTD. KADEGAON TAL- KADEGAON, DIST- SANGLI PIN CODE- 415304
REGETRATION NO.	:	SAN/PRG(A) D.H. 12.
IND NO.	:	SPG/37/MAH M.S. 56/91
PHONE NO.	:	(02347) 242156, 242157
FAX NO	:	(02347) 242705
FOUNDER CHAIRMAN	:	DR. PATANGRAO KADAM
RAW MATERIAL	:	COTTON
CHAIRMAN	:	ADV. SHRI. ATMARAM MADANE.
VICE CHAIRMAN	:	SHRI. TANAJI KARANDE
MANAGING DIRECTOR	:	SHRI. AJIT CHALUCKAY.
ESTABLISHED	:	18/12/1990

1.7 PERSONNEL :-

Four hundred and twenty seven (427) employees are working in the Sut Girni their loyalty, diligence and sense of discipline have made Sagareshwar Sut Girni happy and gave reputation to Kadegaon. All these workers are working in 3 shifts and the timings of shifts are as follows:-

1 st Shift	-	8 a.m. to 4 p.m.
2 nd Shift	-	4.p.m. to 12 nights
3 rd Shift	-	12 nights to 8 a.m.

1.8 DEPARTMENT :-

There are in all 11 departments, the number of workers working in the Sut Girni in different department is as under.

Mixing	-	47
B/A/C/R	-	19
D/F/S/F	-	46
Ring-Frame	-	131
Winding	-	84
Packing	-	12
Maintenance	-	36
Eel/Eng	-	20
General	-	19
Watch and ward	-	6
Lab	-	7

DEPARTMENT OF BLOW-ROOM



DEPARTMENT OF CARDING



DEPARTMENT OF BIOLOGY



DEPARTMENT OF CHEMISTRY



DEPARTMENT OF DRAW-FRAME



DEPARTMENT OF SPEED-FRAME



DEPARTMENT OF RING-FRAME



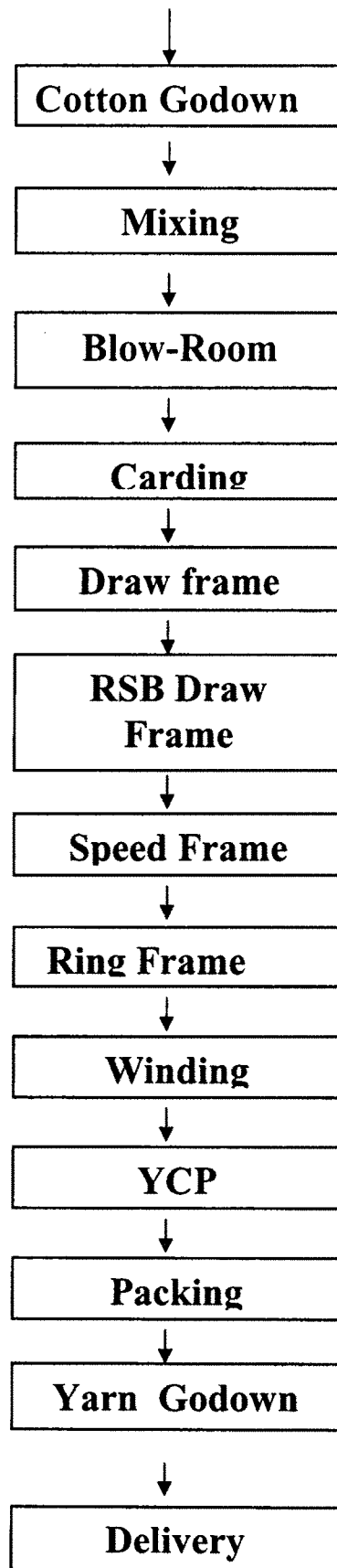
DEPARTMENT OF WINDING



DEPARTMENT OF PACKING



1.9 Process Flow Chart



1) Mixing :-

In mixing department all the cotton are mixed with each other after this process they opening and clean the cotton.

2) Blow Room :-

In this department they remove short fibre of cotton and the micro dust of cotton.

3) Carding :-

In carding department they make slivers of cotton and removing the waste and also making the penalization of fibers.

4) Draw Frame :-

In draw frame department, the main work drafting & penalization or Fiber.

5) Speed Frame :-

The main characteristic of this department is the form small drafting and rooing.

6) Ring Frame :-

The main characteristics of the ring frame is drafting and twisting.

7) Winding :-

Removing all defects, faults and small nobbs of the yarn and making the bigger package of yarn.

8) **YCP :-** Yarn Conditioning Plant

YCP using for increasing strength power of yarn and bulkiness of the yarn.

9) **Packaging :-**

For the packaging of the yarn they use paper cone polythin bags.

1.10 MAINTENANCE OF EMPLOYEES RECORD:-

In SAGARESHWAR Sut Girni the record of every employee is kept in the form of personal file. It contains each and every details of an employee.

e.g. Application form,
Interview Letters,
Medical Certificates,
Appointment Letter

The letter consists of basic wage and increments given charge sheets and the report of domestic enquiry, service record etc.

1.11 RECRUITMENT AND SELECTION :-

Recruitment and selection is regulated as under Recruitment and selection of skilled workers recruitment and selection and skilled workers is done by the following method

Advertisement

The advertisement is given in Marathi daily news paper and application is invited for the post of skilled workers. The candidate must have passed the S.S.C, Exam. The preference is given to the local people and relative of the workers.

The selection depends upon medical examination. The oral interview is also taken by selection committee for skilled workers consist of following members.

1. Factory Manager
2. Labor welfare officer
3. Departmental Head.

1.12 FINANCIAL AND PRODUCTION SITUATION OF THE GIRNI :-

The details regarding share capital, production, position of spindles and profit / loss of the Girni are presented in Table 1.1 to 1.4

Table 1.1
Share Capital

No of share holders	Year 2002 – 03		2003-04		2004-05		2005-06	
	Share holder	Amount In (Lakhs)	Share holder	Amount In (Lakhs)	Share holder	Amount In (Lakhs)	Share holder	Amount in (Lakhs)
Productive members	2437		2436		2436		2436	
Individual members	3528	124.58	3555	125.12	3574	125.50	3719	155.40
Co-Operative Society	4	57.82	4	57.82	4	57.82	4	57.82
Trustee	11	26.06	11	26.06	11	26.06	11	26.06
Other firm / company	1	2.00	1	2.00	1	2.00	1	2.00
Govt. of Maharashtra	1	1890.00	1	1890.00	1	1890.00	1	1890.00
Total	5981	2100.46	6008	2101.00	6027	2101.38	6172	2131.28

The table indicates that the productive members has decreased by one number from 2002-2003 and then remained constant. The number of individual members has constantly increased during 2002-2003 to 2005-2006. The amount of share capital also increased during this period. The number of share holders of co-operative society, trustee, other firm/company, Govt. of Maharashtra shows same number and amount through out the period.

Table 1.2
Production

Particulars	2001 – 2002	2002 – 2003	2003 – 2004	2004 – 2005	2005 – 20 06
Installed spindles	17137 x 5 month 21168 x 7	21168 x 12 m.	21168 x 12 m.	21168 x 12 m.	21168 x 12m.
Total working days	347	357	360	358	359
Available spindles	21282912	23178960	23242464	23178960	23178960
Percentage of working spindles	84.56 %	85.61 %	90.46 %	91.04%	88.32%
Production of yarn	2582814	3174900	3029200	3026350	3110760
Avarage count of yarn	27.56	24.60	27.12	29.22	29.77

The installed capacity of 21168 spindlies have been used in 7 months in the year 2001-2002 and then throughtout year in the next period. The particulars of production shows fluctuating trendes of total working days.

Table 1.3
Reasons of the non – working spindles

Particular	2001-02	2002-03	2003-04	2004-05	2005-06
Cleaning	2.16	2.13	1.84	1.68	1.37
Repairing	0.76	0.39	0.16	0.16	0.27
Lack of bank process	0.71	0.03	-	-	0.03
Shortage of labour	3.11	2.25	1.49	0.51	0.46
Power Failure	2.02	4.24	2.65	3.79	6.81
Public Holiday	5.66	2.19	1.64	1.92	1.64
Total	14.42	11.23	7.78	7.98	10.58

The reasons of non-working spindles for cleaning, lack of bank process, shortage of labour have decreased in percentage during 2001-2002 to 2005-2006. The reasons like repairing, power failure, public holiday shows fluctuating trend. The average picture is also of fluctuating trend.

Table 1.4**Profit / Loss**

(Amount in Lakhs)

Particulars	2001-2002	2002-2003	2003-2004	2004-2005	2005-2006
Profit / Loss Rs	- 293.23	- 132.68	+46.02	+104.81	+193.43
Cash gain / cash loss Rs	+ 138.16	+143.57	+263.69	+257.11	+365.09
Net Profit / net Loss Rs	-213.23	-132.68	+46.02	+104.81	+193.43
Percentage of net profit / Net Loss Rs	9.14	5.53	1.53	3.50	6.78

The table indicates that the Girni was in loss during 2001-2002 and 2002-2003. It had started gaining profits from 2003-2004 and this has increased from 2003-2004 to 2005-2006. The percentage of profit is also increased.

CANTEEN FRONT VIEW



CANTEEN INSIDE VIEW



DATTA-TEMPLE



GARDEN

