

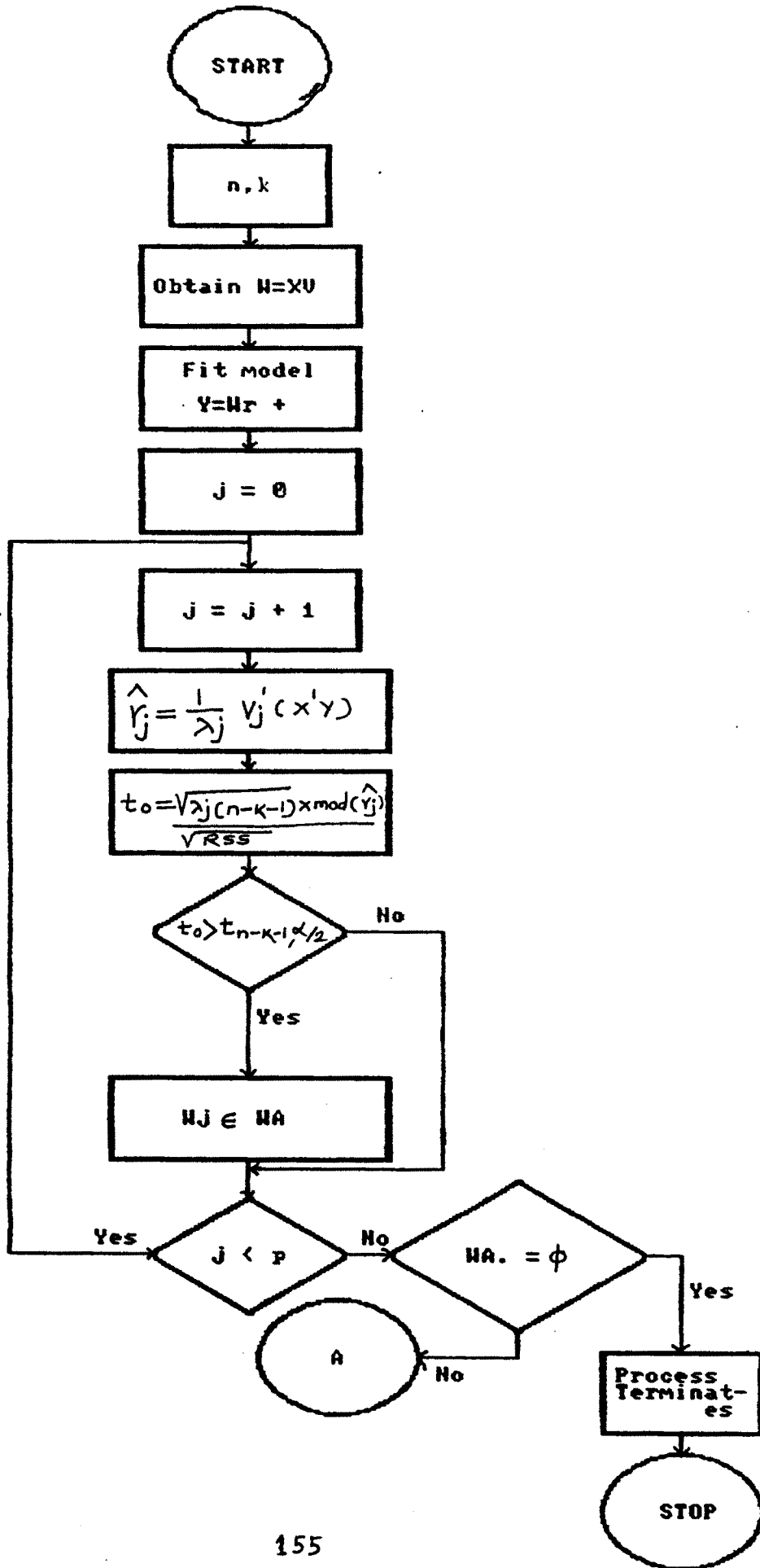
# **APPENDIX**

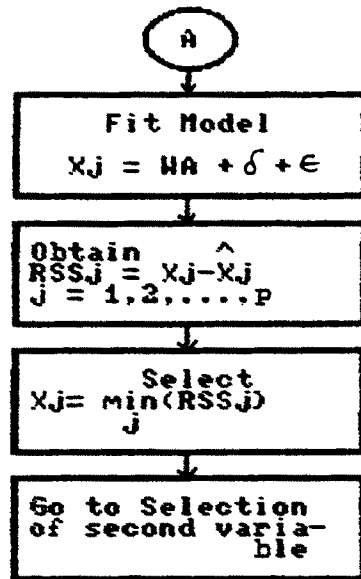
## APPENDIX

Selection method of subset by using principal components by means of flow chart. In Appendix (A), we give flow chart for selection of first variable out of  $k$  independent variables. Here we assume that variable  $X_1$  is selected at first step. In Appendix(B), we give flow chart for selection of second variables out of  $(k-1)$  independent variables. Here we assume that variable  $X_2$  is selected at second step. After selection second variable, we verify whether variable  $X_1$  is included in the model or dropped from the model. The flow chart for verification is given in Appendix(C).

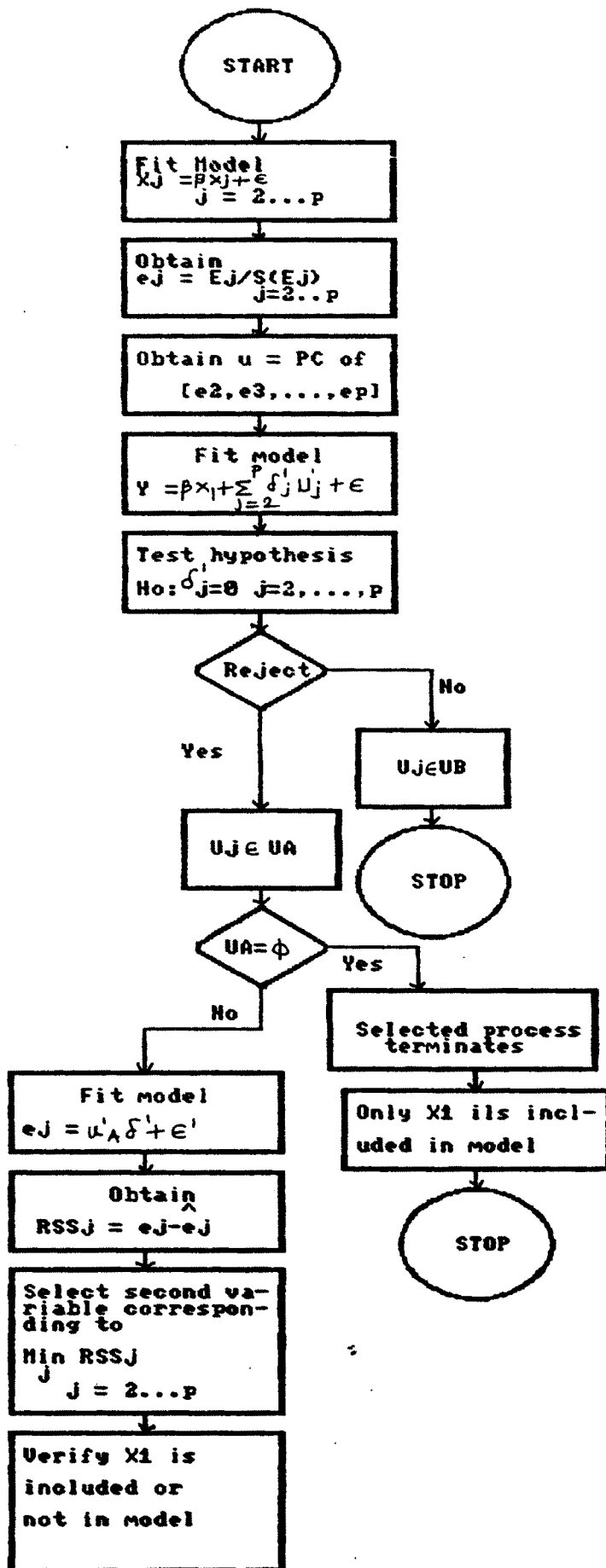
In Appendix(D), we have flow chart for general procedure by assuming the  $X_{(A)}$  is set of previously selected variables and  $X_{(B)}$  is set consisting of unselected variables.

Appendix (A).

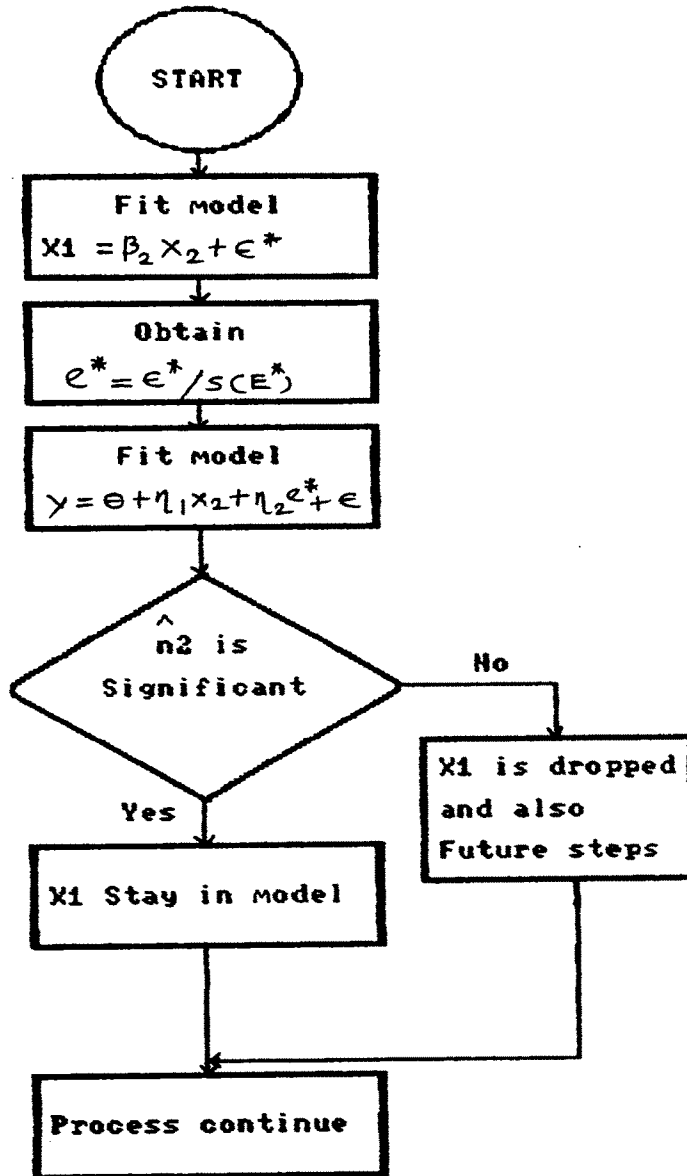




Appendix (B)



Appendix (C).



Appendix C D).

