

# *TAXONOMY*

FIGURE 1. SHOWING THE BODY COLOURATION OF

1. Xanthopimpla honorata honorato (Comeron)  
(Dorsal view)
  
2. Xanthopimpla punctata Fabricius  
(Dorsal view)
  
3. Goryphus mirajensis sp. nov.  
(Lateral view)
  
4. Charops rugosopunctatum sp. nov.  
(Lateral view)
  
5. Diadegma striatopunctata sp. nov.  
(Lateral view, without head)

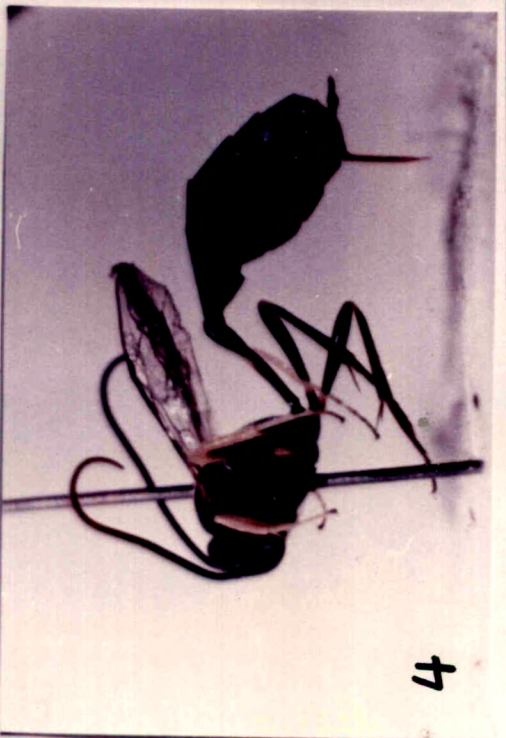


Fig. 1

FIGURE 2. HEAD OF AN ICHNEUMONID : Front and Rear View

- |                                       |                         |
|---------------------------------------|-------------------------|
| 1. Vertex                             | 10. Frontal orbit       |
| 2. Frons                              | 11. Facial orbit        |
| 3. Face                               | 12. Temporal orbit      |
| 4. Cheek                              | 13. Occiput             |
| 5. Clypeus                            | 14. Postocciput         |
| 6. Groove between<br>face and clypeus | 15. Foramen magnum      |
| 7. Clypeal fovea                      | 16. 17 occipital carina |
| 8. Labrum                             | 17. Genal carina        |
| 9. 10,11,12, orbit                    | 18. Oral carina         |
| 9. Vertical orbit                     | 19. Temple.             |

FIGURE 3. THORAX OF AN ICHNEUMONID (side view)

AREAS

- |  |  |
|--|--|
| 1. Median lobe of mesoscutum<br>1 and 2 mesoscutum | 23. First lateral area                         |
| 2. Lateral lobe of mesoscutum                      | 24. Second lateral area                        |
| 3. Scutellum                                       | 25. Third lateral area                         |
| 4. Postscutellum                                   | 26. First pleural area                         |
| 5. Hind margin of metanotum                        | 27. Second pleural area                        |
| 6. Tegula  | 28. Third pleural area                         |
| 7. Subtegular ridge                                | 29. Propodeal spiracle                         |
| 8. Collar  | CARINAE AND GROOVES                            |
| 8,9 & 10-pronotum                                  | A. Notaulus                                    |
| 11,12,13 mesopleurum<br>(mesepimeron)              | B. Epomia                                      |
| 12. Speculum                                       | C. Prepectal carina                            |
| 13. Mesepimeron                                    | D. Mesopleural fovea                           |
| 14. Upper division of<br>metapleurum               | E. Mesopleural suture                          |
| 15. Metapleurum (lower<br>division metapleurum)    | F. Sternaulus                                  |
| 16. Juxtacoxal area                                | G. Postpetal carina                            |
| 17. Propleurum                                     | H. Juxtacoxal carina                           |
| 18. Prepectus                                      | I. Submetapleural carina                       |
| 19. Mesosternum                                    | J. Pleural carina                              |
| 20. Front coxa                                     | K. Lateral longitudinal<br>carina of propodeum |
| 21. Middle coxa                                    | M. Basal transverse carina                     |
| 22. Hind coxa                                      | N. Apical transverse<br>carina of propodeum    |
| 23 - 28 propodeum                                  | O. Propodeal apophysis or<br>crest.            |

FIGURE 4. WINGS OF AN ICHNEUMONID  
(A. Fore wing B. Hind wings)

	veins		
Fore wing		Hind wing	
AB	- Costa	ab	- Costella
CD	- Subcosta	cde	- Subcostella
EFG	- Metacarpus	ef	- Metacarpella
HIJF	- Radius	dgh	- Radiella
KLMNO	- Cubitus	jkl	- Cubitella
PQRW	- Discoideus	mn	- Discoidella
RST	- Subdiscoideus	kg	- Intercubitella
CP	- Medius	if	- Mediella
UV	- Submedius	op	- Submediella
VWX	- Brachius	pq	- Brachiella
BEH	-Stigma	bh	- Basal hamulus
DP	- Basal vien	dh	- Distal hamuli
IL	- First intercubitus	rs	- Axillus
JN	- Second intercubitus	jmp	- Nervellus
QL	- Discocubitus		
K	- Ramulus		
QK	- First recurrent vein		
MS	- Second recurrent vein		
Y	- A bulla		
PV	- Nervulus		
QRW	- Postnervulus		

Cells

1	- Radial cell	12	- Costellan cell
2	- Medial cell	13	- Radiellan cell
3	- Discocubitalcell	14	- Mediellan cell
4	- Areolet	15	- Cubitellan cell
5	- Third cubital cell	16	- Discoidellan cell
6	- Second discoidal cell	17	- Submediellan cell
7	- Third discoidal cell	18	- Brachiellan cell
8	- Sub median cell	19	- Anellan cell
9	- First brachial cell	20	- Postellan cell
10	- Second brachial cell		
11	- Anal cell		
BEH-	Stigma		

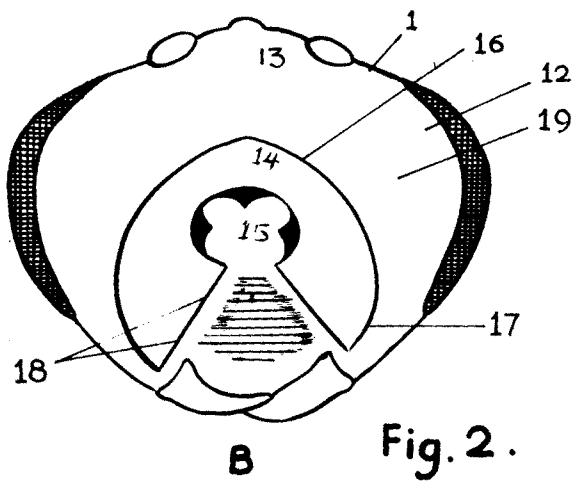
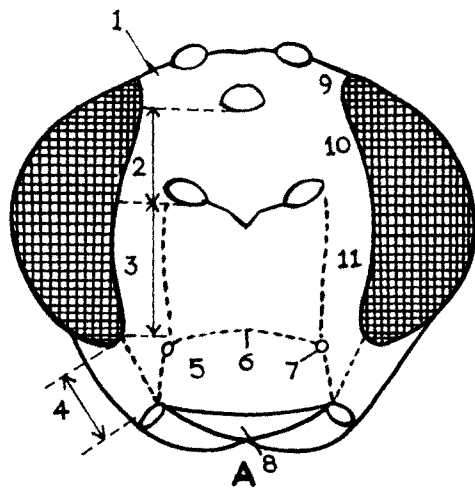


Fig. 2.

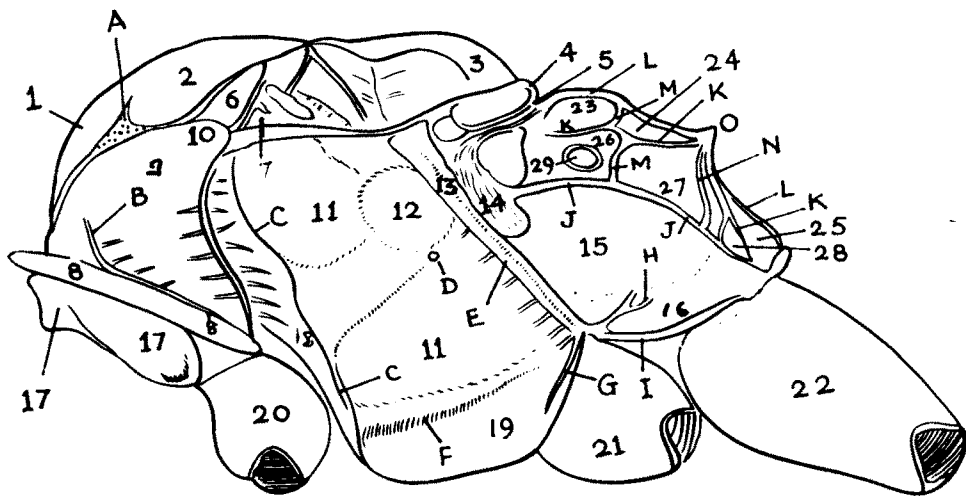


Fig. 3



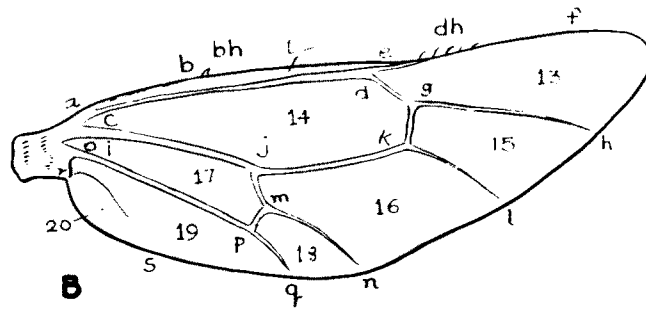
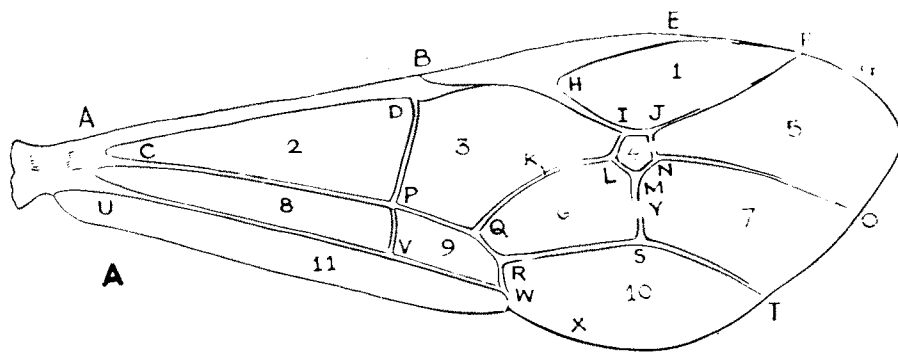


Fig. 4

FIGURE 5. ABDOMEN AND LEG OF AN ICHNEUMONID

A - Abdomen

B - Tip of Ovipositor

C - Leg.

- |                         |                      |
|-------------------------|----------------------|
| A. Abdomen              | B. Tip of ovipositor |
| 1. Petiole              | 1. Notch             |
| 2. Postpetiole          | 2. Teeth             |
| 3. Tergite 1            | 3. Upper valve       |
| 4. Sternite 1           | 4. Lower valve       |
| 5. Tergo-sternal suture | 5. Shaft             |
| 6. Dorsolateral carina  | 6. Nodus             |
| 7. Ventrolateral carina | C. Leg.              |
| 8. Median dorsal carina | 1. Coxa              |
| 9. Thyridium            | 2. Trochanter        |
| 10. Glymma              | 3. Femur             |
| 11. Tergite 2           | 4. Tibia             |
|                         | 5. Tarsus            |
|                         | 6. Claw              |
|                         | 7. Tibial spur.      |

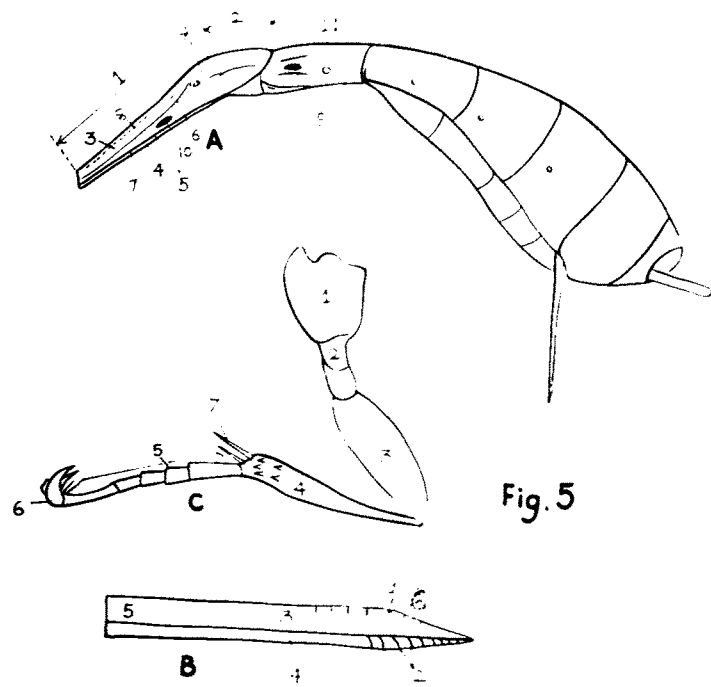
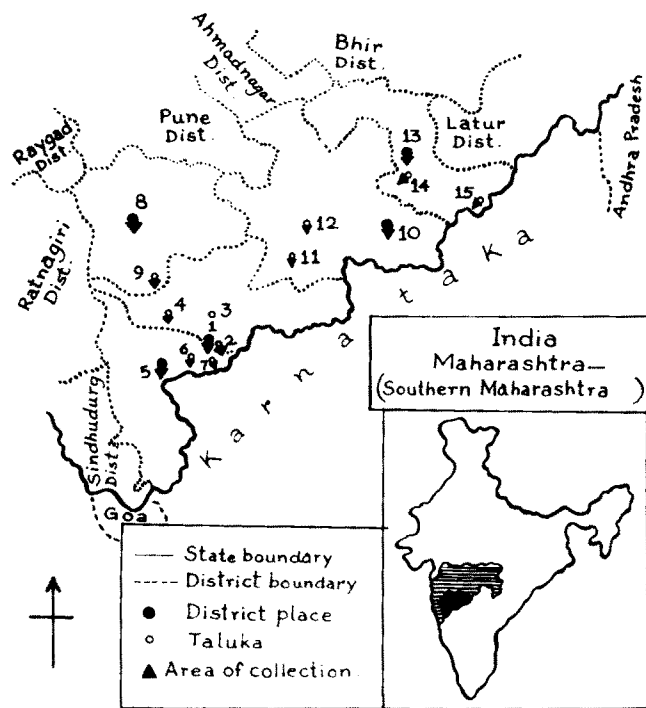


Fig. 5

FIGURE 6. MAP OF MAHARASHTRA SHOWING SOUTHERN  
MAHARASHTRA AND AREA OF COLLECTION

1. Sangli
2. Miraj
3. Tasgaon
4. Islampur
5. Kolhapur
6. Hatkangale
7. Shirol
8. Satara
9. Karad
10. Solapur
11. Sangola
12. Pandharpur
13. Osmanabad
14. Tuljapur
- 15. Omerga



**Fig.6** Map of Maharashtra showing southern Maharashtra.