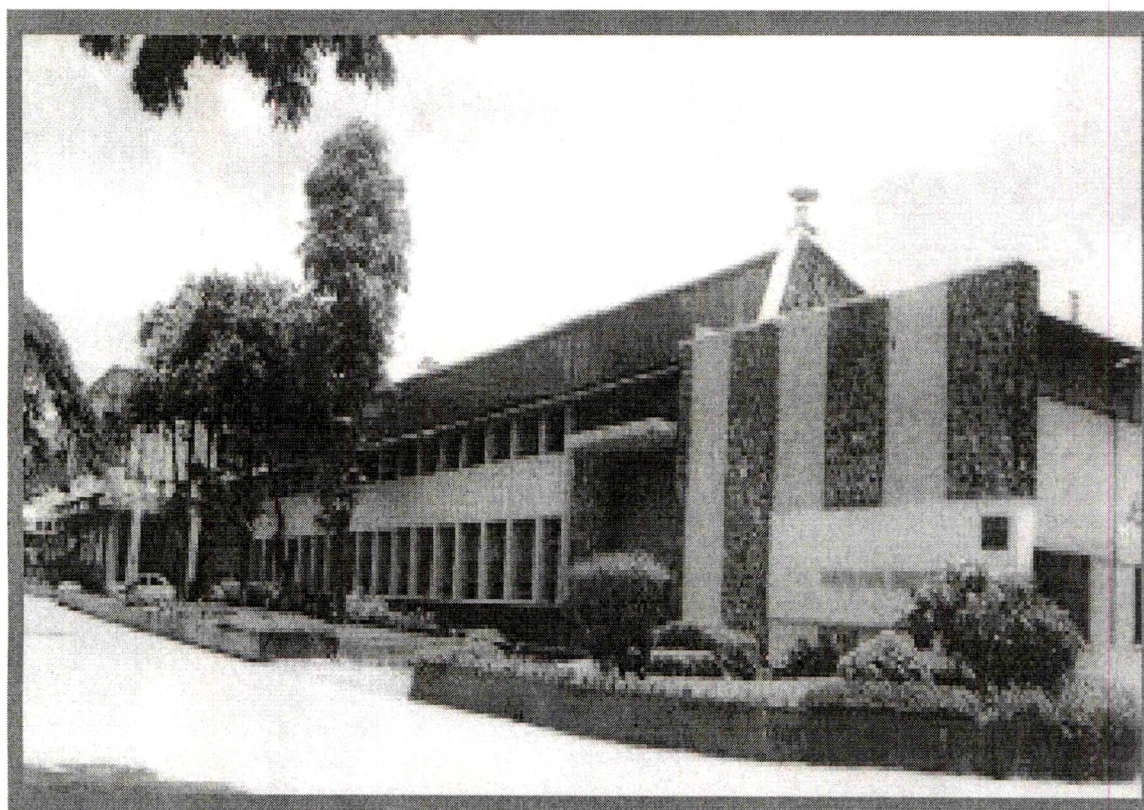


END OF CHAPTER 1

Chapter – II
Company Profile



COMPANY PROFILE

After Research Design next chapter is company profile. In this chapter data is collected regarding to company profile, organization structure, company product, current position, growth of company etc. & also collects the data regarding to different departments i.e. HR, Marketing, production etc.

GHATGE PATIL INDUSTRIES LTD.**PO UCHAGAON, KOLHAPUR 416005 MAHARASHTRA, INDIA**

Company	:	Ghatge Patil Industries Ltd
Location	:	Uchagaon, Kolhapur
City	:	Kolhapur
Pin	:	416005
State	:	Maharashtra
Country	:	India
Company Established	:	July 2, 1960
Phone No.	:	0091 231 2606440
Fax No.	:	0091 231 2605983
Email	:	corporate@gpind.com
Web URL	:	http://www.gpind.com
Plant total area (Built up)	:	93384 sq. mtr.
Manpower	:	1120 no's Tuesday to Sunday 8:30 AM to 5:00 PM
Annual Turnover	:	2004-05
a) Exports	:	US\$4.66 Million
b) Domestic	:	US\$ 22 Million
Chairman & Managing Director:		Mr. J. B. Patil
Joint Managing Director	:	Mr. Kiran J. Patil
Senior Marketing Manager	:	Mr. M. D. Kulkarni

ORIGIN & GROWTH:

Mr. J. B. Patil & Mr. V.M. Ghatge established Ghatge Patil Industries Ltd. as a partnership firm with a machine shop for jobbing works in 1960. After small Foundry unit was established with hand Machine moulding facilities in 1962. In 1966 workshop was enlarged to manufacture clutches & power takeoff in technical collaboration with Twin Disc- U.S.A. There was manufacture of Marine gearboxes in collaborations with M/s Parsons- U.K. in 1967. Then Automotive power takeoffs assemblies in collaborations with M/s Dana Corporations- U.S.A. Manufacture of Electro Magnetic clutches & brake assemblies in collaboration with M/s ZF-Germany & Export quality of Quality G.I. and S.G.I machine casting in 1978. S. G. Iron converter installed in co-operation with George Fischer + GF + Switzerland in 1979. Foundry was modernized with installation of a fully automatic High Pressure Moulding Line supplied by M/s Kunkel Wagner in 1980. It achieved 1000 tons/ month production & ancillary machine shop for machining casting was established in 1986. Small Aluminum foundry for production of intricate casting was established in 1987. Phase wise expansion program started on 1995. 1400 tons/month of production was achieved in 1997. Capacity was upgraded to 3000 tons / month in 1998.

About Ghatge Patil Industries Limited, Valve Division. Ghatge Patil Industries Limited, Valve Division is a leading manufacturer of Cast Steel/ Forged Steel, Gate, and Check Valves in India. Over the past 10 years, GPI Valves have been used in Oil Industries and have earned a reputation for their quality and reliability.

The Plant is equipped with specialized production facilities with CNC Lathes, Machining Centers, Heat treatment furnaces and testing equipment, for total control of all manufactories and gauge calibration facilities Computer aided design support to ensure the quality of the products manufactured.

GPI manufactures variety of Industrial Valves and has received ISO 9001 certification for the Quality Management System implemented at the plant. GPI

has also been licensed to use the API 6D, API6A monograms for the range of Gate Valves. Oil field equipments/parts such as Casting Heads, Bodies, Studded Crosses, Chokes, Tees, and Adapters in Forged/Cast Steel are manufactured.

Present Position:

At present the company is mainly divided in 2 divisions:

1. Foundry Division.
2. Product Division.

MANUFACTURING ACTIVITIES.**1. FOUNDRY DIVISION:**

Ghatge Patil's Foundry Division uses the combination of advanced technology & manpower to meet the specific requirements. It is backed up by the Foundry Engineering Department, equipped with CAD facilities for product design.

PLANT:

- (1) Automated high pressure moulding line with CNC Controlled various pressure system from Kunkel Wagner, Germany with capacity 87 moulds per hour.
- (2) Rotary Mixer of M/s Kunkel Wagner, with capacity 100 Tons/Hr.
- (3) Cold box core shooters ranging from 6 liter's. With continuous sand mixer.

CAPACITY:

36000 MT per annum with molding box size 1150 X 750 X 400/350 mm and capable of producing 175 Kg's per piece.

TYPES OF CASTINGS:

Grey Casting of IS grade 20 to 30. S.G. Iron castings manufactured on patented converter process.

ESTEEMED CUSTOMERS:**DOMESTIC:**

1. Ashok Leyland.
2. Bajaj Tempo.

3. Eicher Tractors.
4. Escorts Tractors.
5. Hindustan Motors.
6. HMT Pinjore.
7. Mahindra & Mahindra
8. Punjab Tractors
9. Telco- Pune & Jamshedpur.
10. Volvo India Pvt. Ltd.
11. L&T-John Deere.

OVERSEAS:

- (1) John Deere- Germany.
- (2) ABC, Australia.
- (3) W. Kellet, U.K.
- (4) ZF Germany.
- (5) Boreman, Ireland.
- (6) SISU Akselit oy, Finland.
- (7) Samco, France.

SOME OF THE FOUNDRY PRODUCTS:

GREY IRON:

- (1) Transmission Cases.
- (2) Cylinder blocks.
- (3) Brake Drums.
- (4) Body Valves.
- (5) Flywheel Housings.
- (6) Rear Axle Housings.

S. G. IRON:

- (1) Wheel Hubs.
- (2) Rear Axle Housings.

- (3) Differential cases.
- (4) Brake System Items.
- (5) Hubs for Trailers.
- (6) Crank Shafts.

2. PRODUCT DIVISION:

Ghatge Patil industry's division specializing in the manufacturing of hi-tech transmission products is spread over two plants & is supported by modern facilities such as horizontal machining centre, vertical turret lathe, gear grinding & jig boring machines. This is backed up by adequate quality control facilities like three coordinate necessary measuring, gear profile checking etc. a strong infrastructure, CAD facilities & a pool of technical personnel aid the design & development of products.

There is more than 250 general purpose as well as special purpose machines. It has also a well-equipped heat treatment shop.

Following are the products manufactured in product division:

1. MECHANICAL CLUTCHES & POWER TAKE OFFS:

GPI manufactures these units in size 5" to 18" diameter in single, double, and triple plates with maximum capacity of 740 HP. These Clutches and PTO units are mainly used for industrial applications covering Drilling Rigs, Road Rollers, Diesel Engine driven Compressors.

2. AUTOMOTIVE POWER TAKE OFF UNITS:

These PTO's are mainly used on Mobile Equipment and vehicles for giving a drive to Auxiliary units such as Pumps, Generators, and Compressors etc. The PTO's available are for side mounting directly on vehicle transmission or split shaft arrangement for giving two outputs with one inputs as used on fire engines.

3. FLUID COUPLINGS:

Fluid Couplings which are being manufactured, are traction type and are available in sizes 6" to 29" for maximum capacity up to 810 HP Motor. These are used on almost all industrial application involving higher inertia, such as conveyor equipment, mixers, rolling mills, different types of textile machines, sugar mills, material handling equipment etc.

4. ELECTROMAGNETIC CLUTCHES AND BRAKES:

Electromagnetic Clutches and Brakes that are being manufactured by us are multi disc type, with slip ring suitable for wet operation & are mostly used in machine tools. There are 16 sizes with static torque capacity from 7 NM to 5800 NM

5. MARINE GEAR BOXES & POWER TAKE OFFS:

The marine reverse and reduction gearboxes incorporated in a wet type disc clutch capable of transmitting full engine torque continuously in forward drive. Hydraulic Gear suitable up to HP.

PTO's used for marine application are specially designed for fishing boats, tugs, cargo boats and barges. It incorporates mechanical dry type clutch unit with molded asbestos, clutch plates for positive transmission of power. The flexible input coupling eliminates misalignment problems.

All these Marine products have been accredited to ISO 9001 Quality Standards and have been IRS approved. We are providing these Gear Boxes with various reduction ratios and its unique design facilitates maintenance without dismounting from the Engine and Propeller Shaft.

6. INDUSTRIAL VALVES:

Industrial Valves are high-pressure forged steel/ cast steel/ Gate Valves, used in oil field application. It is being manufactured as per API-6A Specification, for which API has authorized us to use their monogram. The pressure ranges up

to 5000 PSI, Temperature range of -20 degrees F to 250 degrees F. It is available with either flanged or screwed end connections.

PRODUCTS

- I. Mechanical clutches and power take offs.
- ii. Automotive PTO Units
- iii. Marine Gear Boxes
- iv. Fluid couplings.
- v. Industrial Valves.
- vi. Electromagnetic Clutches and Brakes.
- vii. Mechanical/Hydraulic transmissions, brake systems.
- viii. High Pressure gate valves.

PRODUCTION FACILITY:

GPI has a large Machine Shop with advanced CNC Lathes, Milling Machines, Vertical and Horizontal Machining Centers, different type and size of drilling and other supporting facilities besides a group of gears hobbing, shaping, broaching, profile grinding, dynamic balancing machines, capable of precision helical and spur gears (up to 8 module 400 PcDs) besides a precision tool room for developing jigs, fixtures and special tools with adequate tool and gauge center, with master calibration facility and three co-ordinate measuring system to ensure total product and process quality standards are established. Accredited to ISO 9001 and 9002 for quality standards by BVQI in the year 1996 besides quality certification by American Petroleum Institute, USA (API) for high-pressure gate valves used in oil Industry.

ESTEEMED CUSTOMERS FOR PRODUCTS DIVISION:

1. ASHOK-LEYLAND.
2. ARRAY PRODUCTS LLC.

3. BHARAT EARTYH MOVERS
4. CONSOLIDATED PNEUMATIC [I] LTD.
5. FUNK – U.S.A
6. HMT
7. INGERSOLL RAND [IND] LTD
8. JIS SYSTEM [M] SDN BHD.
9. MEGA GROUP, U.S.A
10. ONGC
11. TRANS FLUID, ITALY.
12. VOLVO, SWEDEN.

ON QUALITY FRONT:

Quality has paramount importance in GPI's production activity. GPI has been awarded ISO 9001 for Foundry Division.

Ghatge Patil Industries Limited Believes there is no substitute for quality of design, materials, manufacturing, Testing and it complies with all codes and standards applicable to the products manufactured by the company.

To achieve and maintain these standards, the Company has established a comprehensive quality assurance system. This is backed by an audit encompassing design, manufacture, assembly, testing, Pre dispatch Inspection, packing and shipping in accordance with the latest standards and specifications. Each departmental head at GPI is responsible for implementing and maintaining quality assurance system. The effectiveness of the entire system is ensured by the participation of all employees who, in one way or other contribute to the high quality of every product form GPI.

The Company's laboratories are equipped for chemical analyses, mechanical testing and metallurgical examination,. NDT examinations like magnetic particle testing, Due penetrates testing other NDT Tests like

Radiography, reputed approved outside laboratories conduct Ultrasonic testing. Hydrostatic testing of body and seat ensure the integrity of assembled products and provide an audit of their safety. Periodic inspection of jigs and fixtures periodic calibration of inspection, measuring and Test equipments are apart of the Company's quality assurance procedure. On request, offers its products to independent authorities for inspection and pressure testing.

The QUALITY STATEMENTS of GPI are:

1. To provide the products & services to achieve increasing level of customer's satisfaction.
2. To earn & enhance reputation as leaders in our line of products.

Departments in GPI:**1. Marketing Department:**

The products prepared in assembly lines are sent outside through this department. As per the orders components are manufactured by ability of shop to produce the particular job. The materials are brought from particular clients & sent to specific department for their further operations.

2. Purchase Department:

This department plays important role in helping product manufacturing in the company. It keeps the all records of total products to be manufacturing & raw material required for it. As per the schedule of products to be produced the whole program is decided & within that period the product is completed.

3. Personnel Department:

This is the department which deals with all Labor matter & it is a bridge between the management & employee therefore it has got so much importance

in the industry. This department is working under the authority of Chief Executive & has got the equal status as that of other executives.

It takes care of workers & increases the production. It will decide the company's policy & as per which the whole work is carried out. The department also communicates with other companies to develop relation among them. This department motivates workers for training & development programs & also the other human resource development programs. They are recreating proper persons for proper job at proper place & at proper time.

EMPLOYEE WELFARE & SOCIAL SERVICE:

GPI accords considerable significance to welfare to welfare of its employees.

Free eye camps, free dental checkup programs and free general health check up camps are organized every year inside the factory with experts from respective fields and with the help of social organization like Lions Club International.

GPI employees volunteer in large numbers in donating blood and they donate 400 to 450 bottles of blood every year. Company organizes the blood donation camps and rewards the donors as taken of appreciation.

As a part of propagation of education GPI rewards meritorious students from Employee's families during Independence Day and Republic day celebrations.

GPI has a clinic of its own and maintains an ambulance for emergence cases.

GPI offers counseling to alcohol addicts, rewards and rehabilitates those coming out of addiction.

GPI arranges finance to employees for buying vehicles.

GPI has given donations to local schools for building additional classrooms.

GPI has provided streetlights in neighboring village.

GPI has raised flood relief funds whenever Kolhapur was hit with floods.

HUMAN RESOURCES:**Division wise strength of employee**

DIVISION	WORKERS	MIN.AVG.YRS.
Product division	368	20
Foundry division	351	25
Service department	66	25
Managerial staff	25	20
Supervisory staff	268	15
Temporary staff	42	-
Total strength	1120	-

GPI Distributor / Dealer Network

Area	Location	No. of Dealers
Maharashtra	Mumbai	4
	Malvan	1
	Ratnagiri	1
	Deogad	1
Gujrat	Veraval	2
	Porbandar	1
	Okha	1
Goa	Mandgao	1
Karnataka	Mangalore	1
Kerla	Kannur	1
	Calicut	1
	Cochin	1
	Kollam	1
Tamil Nadu	Chennai	2
	Pondicherry	2

	Tuticorin	4
	Madurai	2
	Pudukkottai	1
Andra Pradesh	Repulle	1
	Yanam	1
	Kakinada	1
	Vaizag	1
Orissa	Paradeep	1
	Balasore	1
Culcutta	Kakdweep	2
	Calicut	1

JPB Group of Companies

JBP Group of Companies; a leading group of engineering companies at Kolhapur engaged in the manufacture of Grey & S. g. Iron castings, Power transmission products catering to industrial & off highway construction mining equipment industry besides having activities for distribution of cars, tractors, jeeps, LCV's & after sales with good road transportation networks.

Following are the JBP group of companies:

1. GP Industries: Manufacture of G.I. & S.G. Iron Casing & industrial & off highway construction equipments, power transmission aggregates.
2. GP Automobiles: Authorized dealers of Automobiles- jeeps, Cars, LCV's, Tractor, Cummins diesel engines, Bosch Fuel Injection System.
3. Jaykumar Patil Transport: Goods carrier with a network of 150 offices act over the country.

END OF CHAPTER 2